

MICRO SWITCH

FREERPORT ILLINOIS, U.S.A.
A DIVISION OF HONEYWELL

FED. CODE. CODE 91929

SWITCH - BASIC

CATALOG LISTING

31ISM704-T

DRAWING NUMBER
31ISM704-T

ISSUE
M

6

REPLACES
RELEASE NO. PR-275

PAGE 1 OF 1

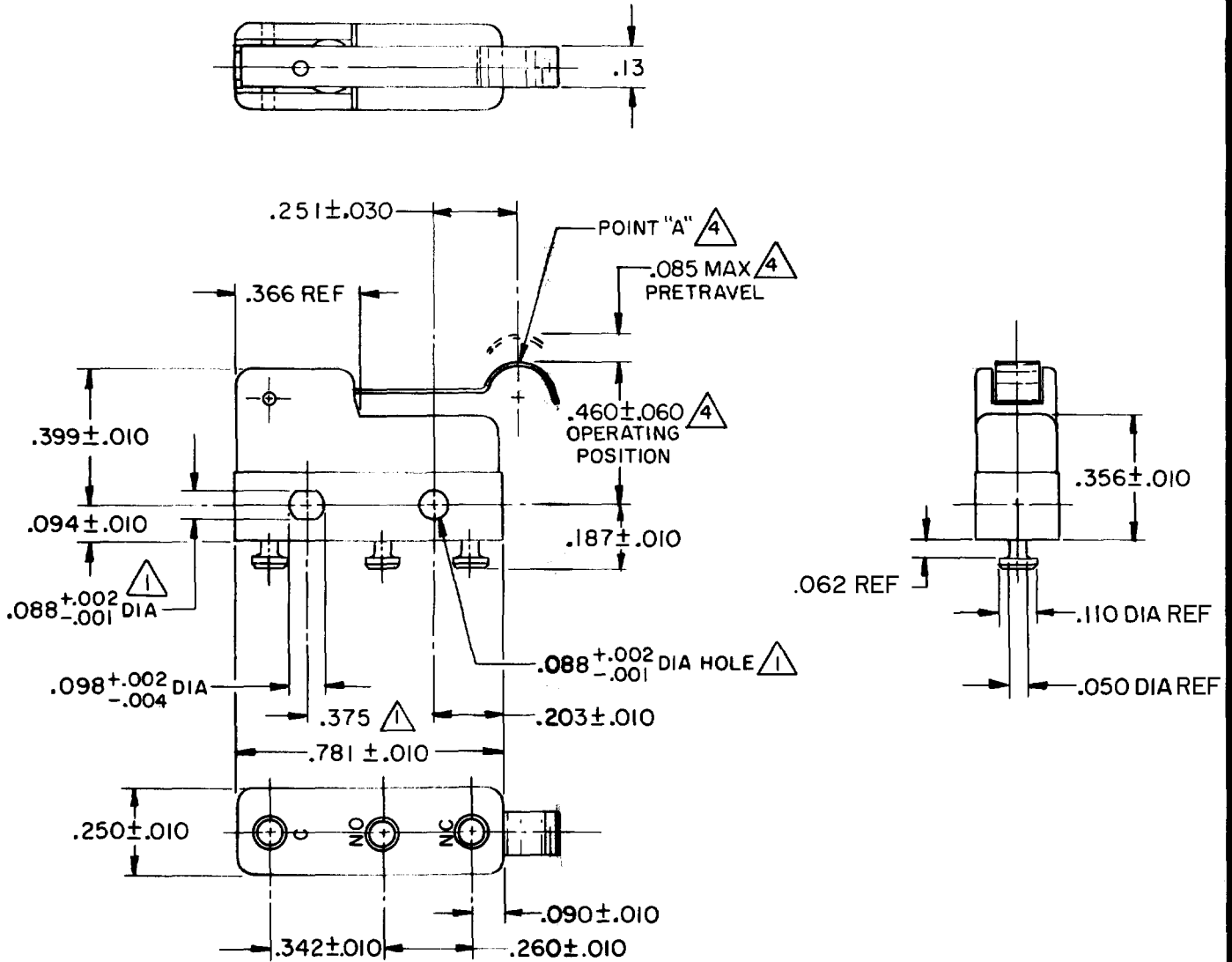
REVISIONS

A	CO31079	RE R	27 NOV 72
B	CO95172	J J A	21 JUNE 99
C	CO95544	TSM	28 SEP 99

FORMTEK
FO-5284B

DRAWN

CHECK PRW 8 DEC '72
CHECK LSD 20 DEC 72
CHECK PRW 8 DEC '72
CHECK LSD 20 DEC 72



NOTE -

- 1 MOUNTING HOLES WILL ACCEPT PINS OR SCREWS OF .087 MAX DIA ON .375 ± .002 CENTERS
- 2 SWITCH WILL WITHSTAND TEMPERATURE OF 250°F
- 3 TERMINALS ARE PLATED FOR SOLDERING
- 4 CHARACTERISTICS TAKEN AT POINT "A"

THIS DRAWING COVERS A PROPRIETARY ITEM AND IS THE PROPERTY OF MICRO SWITCH, A DIVISION OF HONEYWELL. THIS DRAWING IS NOT TO BE COPIED OR USED WITHOUT THE APPROVAL OF MICRO SWITCH.

CHARACTERISTICS	ELECTRICAL DATA	SCALE 2 TO 1
OPERATING FORCE - - - - - 16 GRAM MAX	CONTACT ARRANGEMENT S P D T	DO NOT SCALE PRINT
RELEASE FORCE - - - - - 3 GRAM MIN	30 VOLTS DC RATING	UNLESS OTHERWISE NOTED DIMENSIONS ARE IN INCHES
DIFFERENTIAL TRAVEL - - - - -.013 MAX	INDUCTIVE - - - - SEA LEVEL - - 3 AMP 50,000 FT - - 2.5 AMP	TOLERANCES ARE
OVERTRAVEL - - - - - .018 MIN	RESISTIVE - - - - SEA LEVEL - - 5 AMP 50,000 FT - - 5 AMP	ONE PLACE (.0) ± .030
	MAXIMUM INRUSH - - - - - 24 AMP	TWO PLACE (.00) ± .015
	UNDERWRITERS' LAB. INC. LISTED RATING	THREE PLACE (.000) ± .005
	4A - 250 VAC	ANGLES ±
	-L119-	WEIGHT .006 LB MAX