

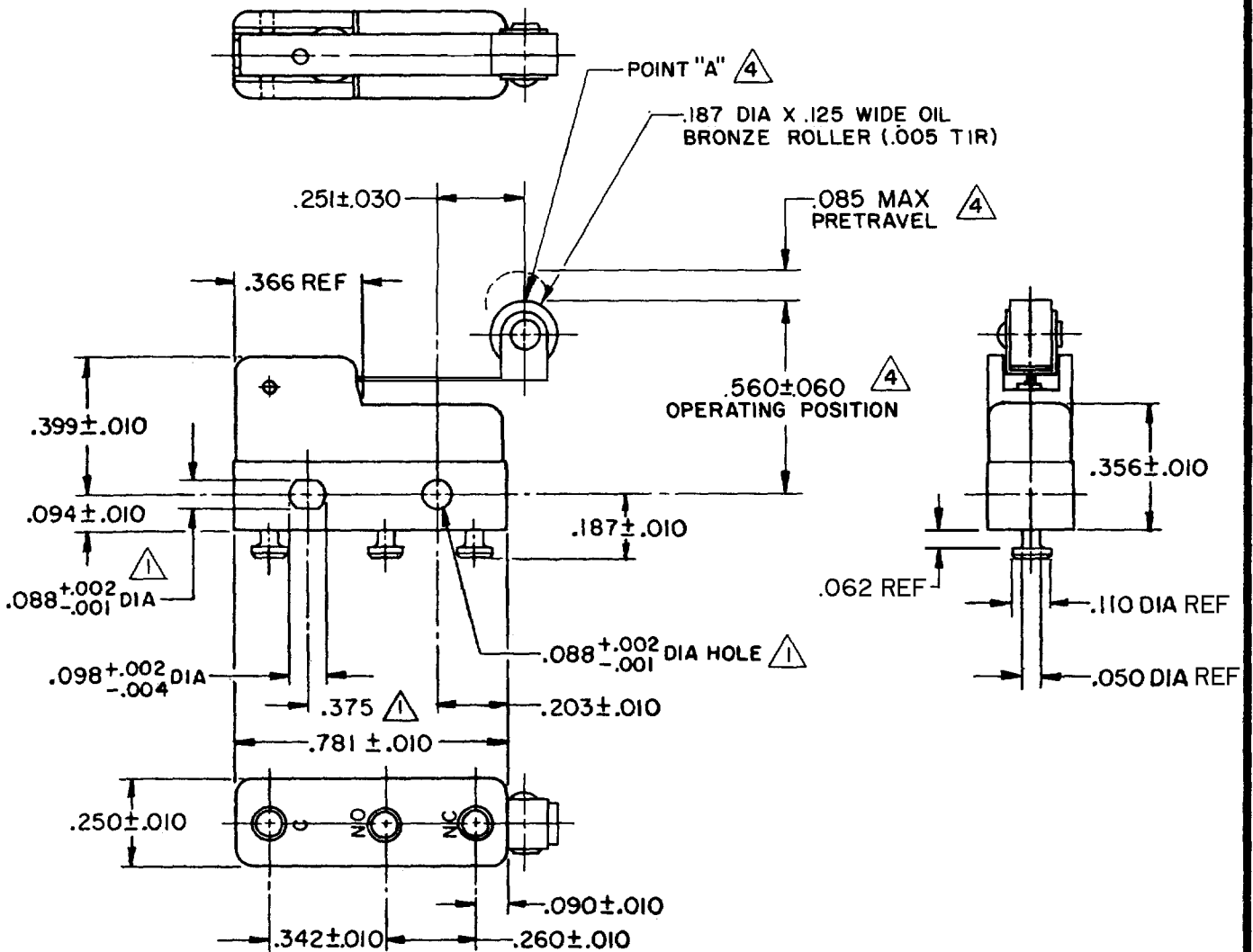
# MICRO SWITCH

FREEPORT ILLINOIS, U.S.A  
A DIVISION OF HONEYWELL  
FED. CODE CODE 91929

# SWITCH-BASIC

CATALOG LISTING  
**311SM6-T**

DRAWING NUMBER: **311SM6-T**  
 PAGE 1 OF 1  
 ISSUE: **M**  
 CHECK: **5**  
 REVISIONS:  
 A 00-31079 S R H 27 SEP 72  
 B CO-77768 S A D 12 JUL 94  
 C CO-95172 J J A 21 JUNE 99  
 D 202140 CSL 7 FEB 01  
 RELEASE NO. SR11750  
 REPLACES: SR11750  
 RASTER  
 FO-52898  
 DRAWN: SR H 27 SEP 72  
 CHECK: US D 29 SEP 72



**NOTE-**

- $\triangle$  MOUNTING HOLES WILL ACCEPT PINS OR SCREWS OF .087 MAX DIA ON .375  $\pm$  .002 CENTERS
- 2- SWITCH WILL WITHSTAND TEMPERATURE OF 250°F
- 3- TERMINALS ARE PLATED FOR SOLDERING
- $\triangle$  CHARACTERISTICS TAKEN AT POINT "A"

THIS DRAWING COVERS A PROPRIETARY ITEM AND IS THE PROPERTY OF MICRO SWITCH, A DIVISION OF HONEYWELL. THIS DRAWING IS NOT TO BE COPIED OR USED WITHOUT THE APPROVAL OF MICRO SWITCH.

| CHARACTERISTICS $\triangle$        | ELECTRICAL DATA   | SCALE 2 TO 1   |
|------------------------------------|---|--|
| OPERATING FORCE ----- 40 GRAM MAX  | CONTACT ARRANGEMENT<br>S P D T  | DO NOT SCALE PRINT   |
| RELEASE FORCE ----- 7 GRAM MIN     | 30 VOLTS DC RATING<br>INDUCTIVE ----- SEA LEVEL --- 3 AMP<br>50,000 FT --- 2.5 AMP<br>RESISTIVE ----- SEA LEVEL --- 5 AMP<br>50,000 FT --- 5 AMP<br>MAXIMUM INRUSH ----- 24 AMP | UNLESS OTHERWISE NOTED<br>DIMENSIONS ARE IN INCHES<br><b>TOLERANCES ARE</b>                              |
| DIFFERENTIAL TRAVEL ----- .019 MAX |   | ONE PLACE (.0) $\pm$ .030<br>TWO PLACE (.00) $\pm$ .015<br>THREE PLACE (.000) $\pm$ .005<br>ANGLES $\pm$ |
| OVERTRAVEL ----- .018 MIN          | SA 250 VAC $\sim$ <b>RLC</b>  | WEIGHT .006 LB MAX   |