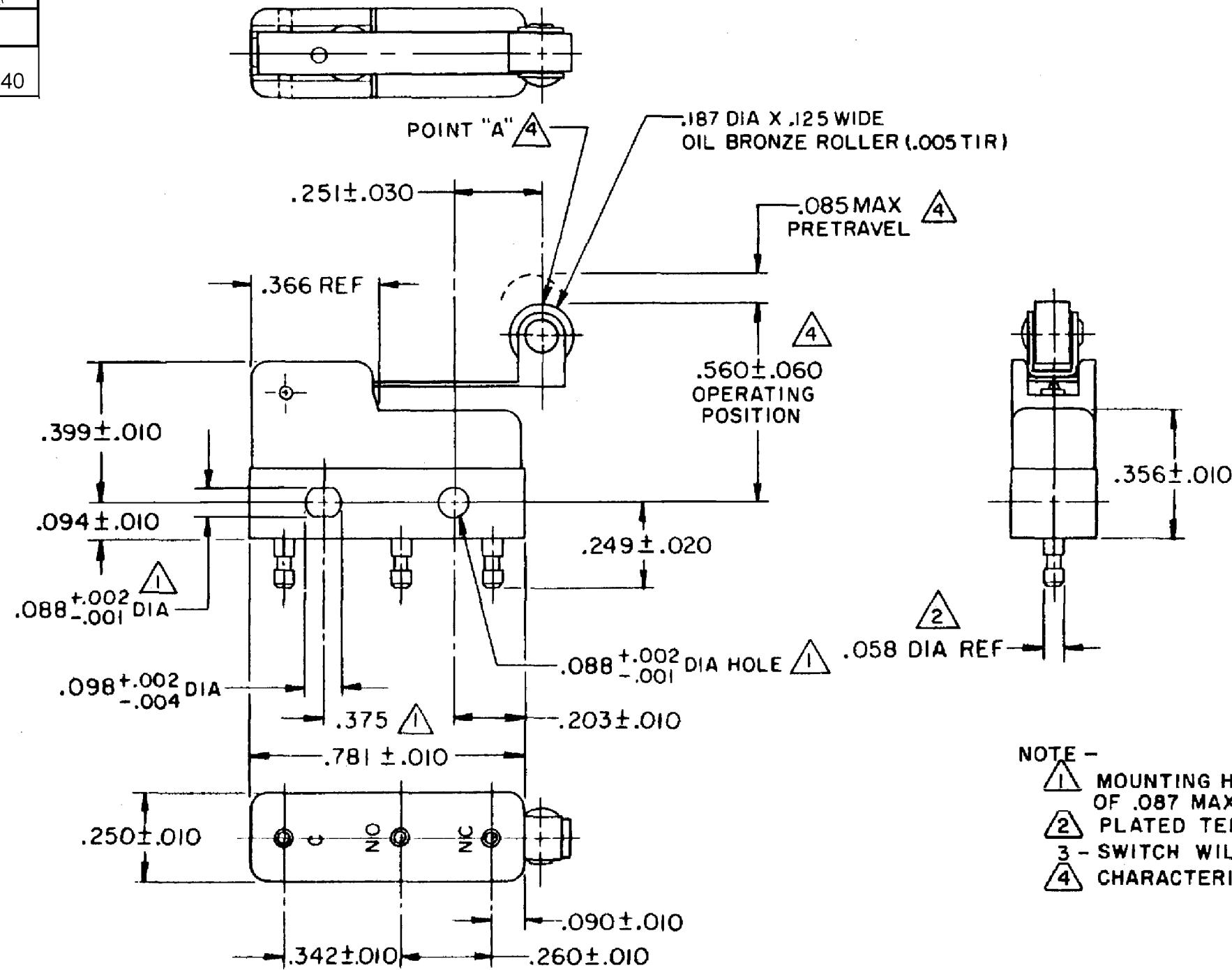


HONEYWELL
PART NUMBER
311SM6-H58
PRODUCT CODE
TZA1340

REV	DOCUMENT	CHANGED BY	CHECK
8	0038113	PRS 12JUN08	BLR



- NOTE -
- ¹ MOUNTING HOLES WILL ACCEPT PINS OR SCREWS OF .087 MAX DIA ON .375 ± .002 CENTERS
 - ² PLATED TERMINALS WILL ACCEPT "AMP INC" .058 DIA PIN RECEPTACLES.
 - ³ SWITCH WILL WITHSTAND TEMPERATURE OF 250° F
 - ⁴ CHARACTERISTICS TAKEN AT POINT "A"

RELEASE NO.	PR - 954
REPLACES	-

CHARACTERISTICS ⁴
OPERATING FORCE -- 40 GRAM MAX
RELEASE FORCE -- 7 GRAM MIN
DIFFERENTIAL TRAVEL -- .019 MAX
OVERTRAVEL -- .018 MIN

ELECTRICAL DATA	
CONTACT ARRANGEMENT SPDT	
30 VOLTS DC RATING	
	SEA LEVEL 50,000 FT
INDUCTIVE	3 AMP 2.5 AMP
RESISTIVE	5 AMP 5 AMP
MAXIMUM INRUSH 24 AMP	
APPROVALS	KEMA, CE 5A, 250V ~ T85 1E4 ⁰⁵ CE
	UL, CSA 5A, 250 VAC ~ ^{UL} ^{CSA} BRAND L4

DESIGN UNITS: INCH
TOLERANCES UNLESS NOTED:
NO PLACE X ±
ONE PLACE .X ± 0.030
TWO PLACE .XX ± 0.015
THREE PLACE .XXX ± 0.005
FOUR PLACE .XXXX ±
ANGLES ±
THIRD ANGLE PROJECTION

DRAWN	VK	02 NOV 07
CHECK	RJ	02 NOV 07
THIS DRAWING COVERS A PROPRIETARY ITEM AND IS THE PROPERTY OF HONEYWELL. THIS DRAWING IS NOT TO BE COPIED OR USED WITHOUT THE PERMISSION OF HONEYWELL.		
INTERPRET PER ANSI Y14.5M-1982 OTHER HONEYWELL ENGINEERING STANDARDS MAY APPLY		
RASTER		

Honeywell			
TITLE SWITCH - BASIC			
SIZE	TYPE	DRAWING NAME	REV
B	I	311SM6-H58	8
SCALE	-	WEIGHT .006 LB MAX	SHEET 1 OF 1