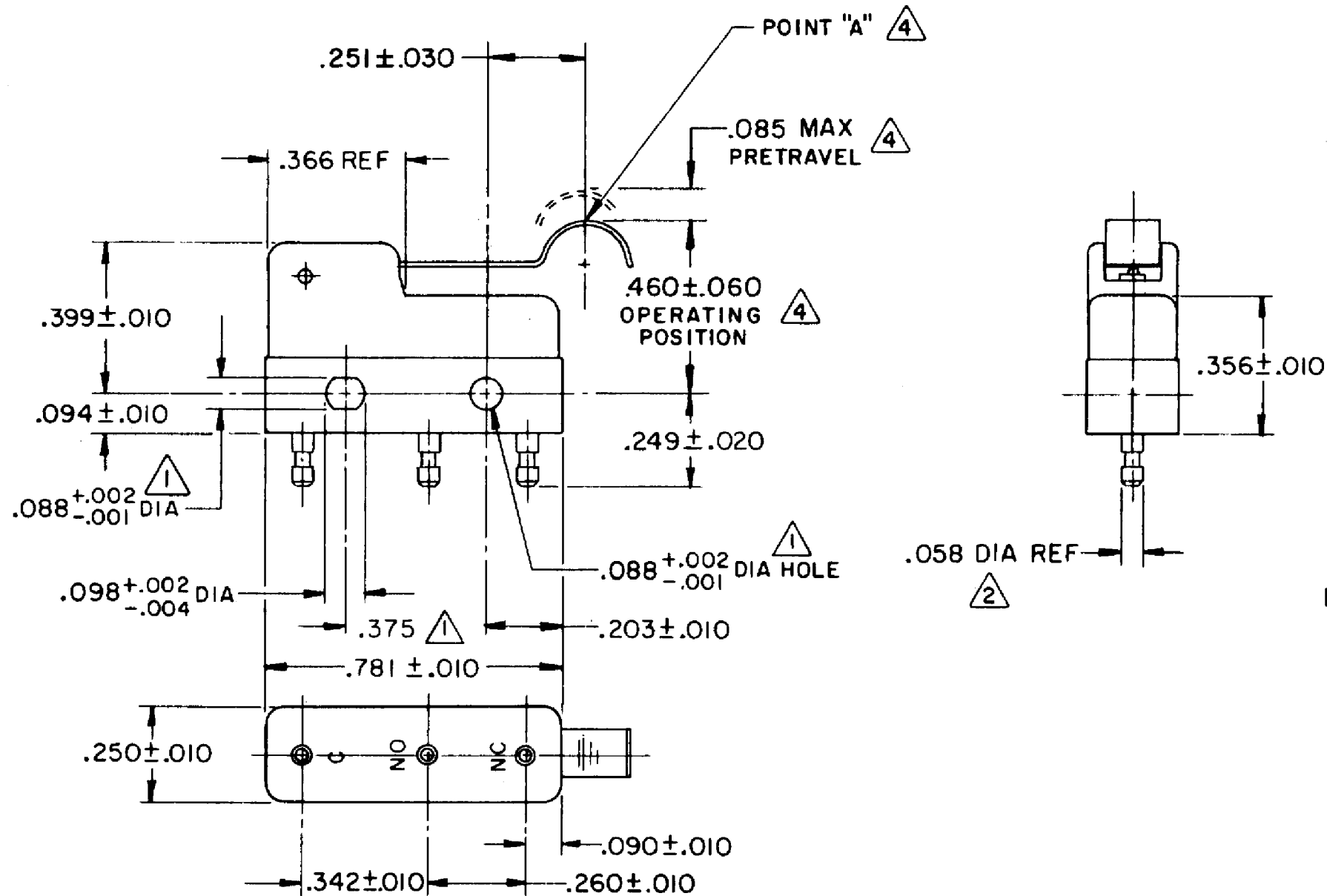
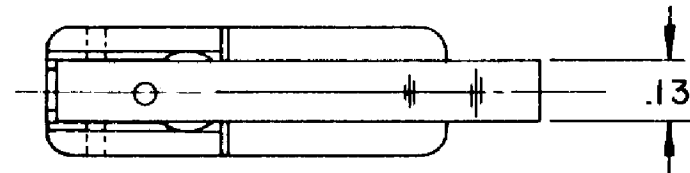


|                          |
|--------------------------|
| HONEYWELL<br>PART NUMBER |
| 311SM4-H58               |
| PRODUCT CODE<br>TZA1247  |

| REV | DOCUMENT | CHANGED BY  | CHECK |
|-----|----------|-------------|-------|
| 8   | 0038113  | PRS 12JUN08 | BLR   |



NOTE -

- (1) MOUNTING HOLES WILL ACCEPT PINS OR SCREWS OF .087 MAX DIA ON .375 ± .002 CENTERS
- (2) PLATED TERMINALS WILL ACCEPT "AMP INC" .058 DIA PIN RECEPTACLES.
- 3 - SWITCH WILL WITHSTAND TEMPERATURE OF 250° F
- (4) CHARACTERISTICS TAKEN AT POINT "A"

|             |           |
|-------------|-----------|
| RELEASE NO. | PR - 5375 |
| REPLACES    | -         |

| CHARACTERISTICS (4)                |
|------------------------------------|
| OPERATING FORCE - - 40 GRAM MAX    |
| RELEASE FORCE - - - - 7 GRAM MIN   |
| DIFFERENTIAL TRAVEL - - - .019 MAX |
| OVERTRAVEL - - - - - .018 MIN      |

| ELECTRICAL DATA             |                             |
|-----------------------------|-----------------------------|
| CONTACT ARRANGEMENT<br>SPDT |                             |
| 30 VOLTS DC RATING          |                             |
|                             | SEA LEVEL 50,000 FT         |
| INDUCTIVE                   | 3 AMP 2.5 AMP               |
| RESISTIVE                   | 5 AMP 5 AMP                 |
| MAXIMUM INRUSH 24 AMP       |                             |
| APPROVALS                   | KEMA, CE 5A, 250V ~ T85 1E4 |
|                             | UL, CSA 5A, 250 VAC ~       |

|                          |
|--------------------------|
| DESIGN UNITS: INCH       |
| TOLERANCES UNLESS NOTED: |
| NO PLACE X ±             |
| ONE PLACE .X ±           |
| TWO PLACE .XX ±          |
| THREE PLACE .XXX ±       |
| FOUR PLACE .XXXX ±       |
| ANGLES ±                 |
| THIRD ANGLE PROJECTION   |

|  |    |           |
|--|----|-----------|
| DRAWN  | VK | 05 NOV 07 |
| CHECK  | RJ | 05 NOV 07 |
| THIS DRAWING COVERS A PROPRIETARY ITEM AND IS THE PROPERTY OF HONEYWELL. THIS DRAWING IS NOT TO BE COPIED OR USED WITHOUT THE PERMISSION OF HONEYWELL. |    |           |
| INTERPRET PER ANSI Y14.5M-1982 OTHER HONEYWELL ENGINEERING STANDARDS MAY APPLY   |    |           |
| RASTER   |    |           |

|                         |      |                    |              |
|-------------------------|------|--------------------|--------------|
| <b>Honeywell</b>        |      |                    |              |
| TITLE<br>SWITCH - BASIC |      |                    |              |
| SIZE                    | TYPE | DRAWING NAME       | REV          |
| B                       | I    | 311SM4-H58         | 8            |
| SCALE                   | -    | WEIGHT .006 LB MAX | SHEET 1 OF 1 |