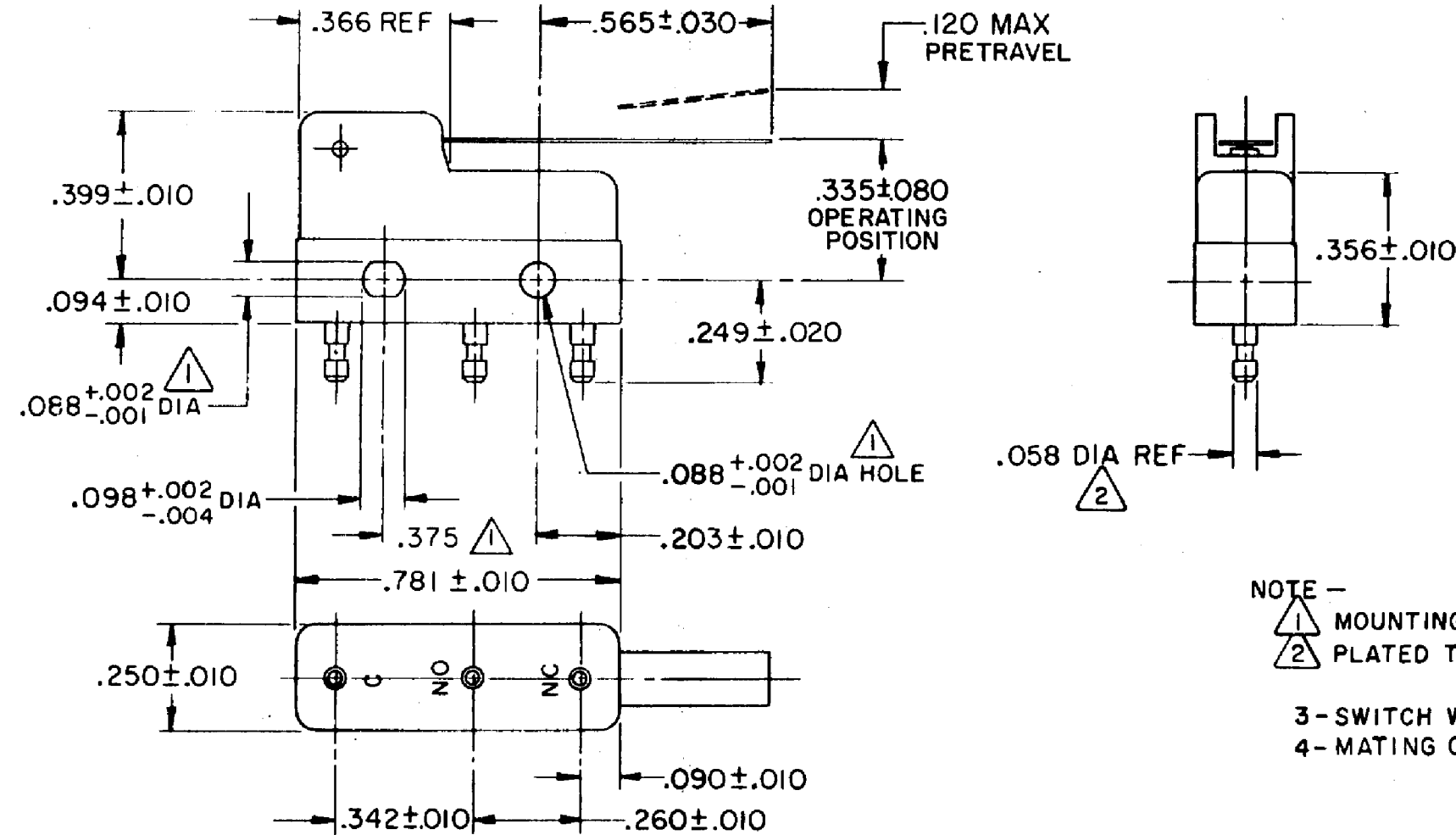
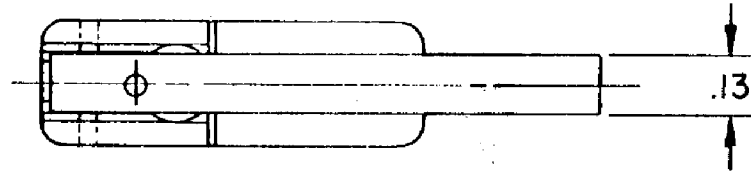


HONEYWELL
PART NUMBER
311SM43-H58
PRODUCT CODE
TZA2643

REV	DOCUMENT	CHANGED BY	CHECK
8	0038114	KVS 03JUN08	ASD



NOTE -
 1 MOUNTING HOLES WILL ACCEPT PINS OR SCREWS OF .087 MAX DIA ON .375 ± .002 CENTERS
 2 PLATED TERMINALS WILL ACCEPT "AMP INÇ" .058 DIA PIN RECEPTACLES.

3 - SWITCH WILL WITHSTAND TEMPERATURE OF 250° F
 4 - MATING CONTACT SURFACES ARE 24K SOLID GOLD OVERLAY

RELEASE NO.	PR - 421
REPLACES	-

CHARACTERISTICS	
OPERATING FORCE	30 GRAM MAX
RELEASE FORCE	5 GRAM MIN
DIFFERENTIAL TRAVEL	.027 MAX
OVERTRAVEL	.026 MIN

ELECTRICAL DATA		
CONTACT ARRANGEMENT SPDT		
30 VOLTS DC RATING		
	SEA LEVEL	50,000 FT
INDUCTIVE	1/2 AMP	1/2 AMP
RESISTIVE	1 AMP	1 AMP
MAXIMUM INRUSH 2 AMP		
APPROVALS	KEMA, CE	1A, 250V ~ T85 1E4
	UL, CSA	1A, 125 VAC

DESIGN UNITS:	INCH
TOLERANCES UNLESS NOTED:	
NO PLACE	X ±
ONE PLACE	.X ±
TWO PLACE	.XX ±
THREE PLACE	.XXX ±
FOUR PLACE	.XXXX ±
ANGLES	±
THIRD ANGLE PROJECTION	

DRAWN	VK	07 NOV 07
CHECK	RJ	07 NOV 07
THIS DRAWING COVERS A PROPRIETARY ITEM AND IS THE PROPERTY OF HONEYWELL. THIS DRAWING IS NOT TO BE COPIED OR USED WITHOUT THE PERMISSION OF HONEYWELL.		
INTERPRET PER ANSI Y14.5M-1982 OTHER HONEYWELL ENGINEERING STANDARDS MAY APPLY		
RASTER		

Honeywell			
TITLE SWITCH - BASIC			
SIZE	TYPE	DRAWING NAME	REV
B	I	311SM43-H58	8
SCALE	-	WEIGHT .006 LB MAX	SHEET 1 OF 1