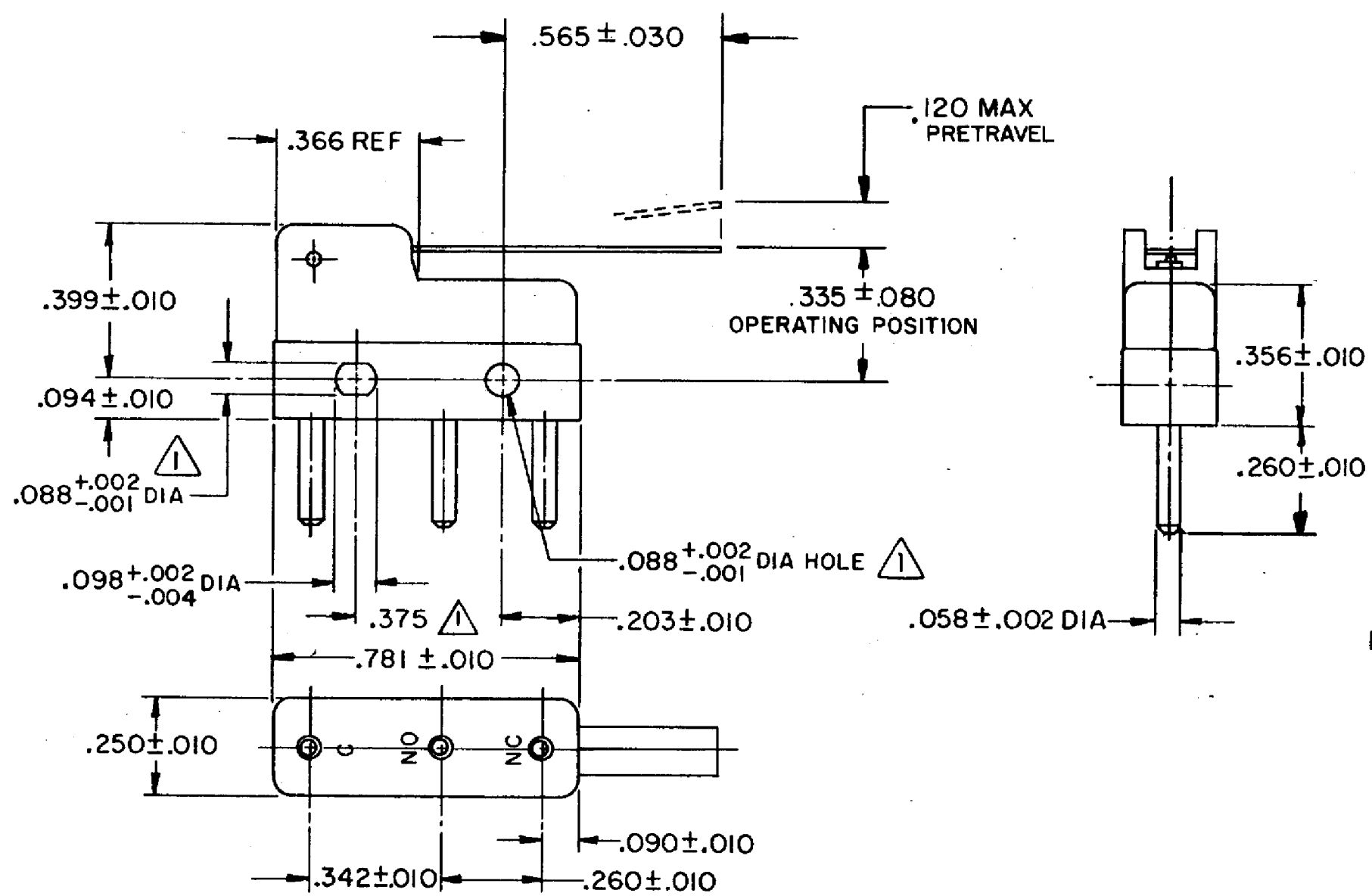
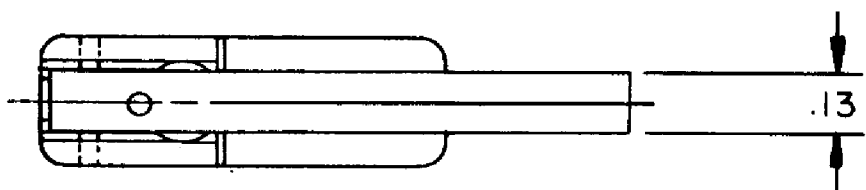


HONEYWELL
PART NUMBER
311SM2-H2
PRODUCT CODE
TZA1135

REV	DOCUMENT	CHANGED BY	CHECK
7	0038113	PRS 12JUN08	BLR



NOTE -
 ▲ MOUNTING HOLES WILL ACCEPT PINS OR SCREWS OF .087 MAX DIA ON .375 ± .002 CENTERS
 2- SWITCH WILL WITHSTAND TEMPERATURE OF 250°F
 3- PLATED TERMINALS WILL ACCEPT AIRCRAFT MARINE PRODUCTS CO NO 42429 CONNECTOR

RELEASE NO.	SR - 13003
REPLACES	-

CHARACTERISTICS

OPERATING FORCE -- 30 GRAM MAX

RELEASE FORCE-- -- 5 GRAM MIN

DIFFERENTIAL TRAVEL-- -- .027 MAX

OVERTRAVEL - - - - .026 MIN

ELECTRICAL DATA

CONTACT ARRANGEMENT
SPDT

30 VOLTS DC RATING

	SEA LEVEL	50,000 FT
INDUCTIVE	3 AMP	2.5 AMP
RESISTIVE	5 AMP	5 AMP

MAXIMUM INRUSH 24 AMP

APPROVALS

KEMA, CE	5A, 250V ~ T85 1E4	CE
UL, CSA	5A, 250 VAC ~	UL, CSA

DESIGN UNITS: INCH

TOLERANCES UNLESS NOTED:

NO PLACE	X	±	-
ONE PLACE	.X	±	0.030
TWO PLACE	.XX	±	0.015
THREE PLACE	.XXX	±	0.005
FOUR PLACE	.XXXX	±	-
ANGLES		±	-

THIRD ANGLE PROJECTION

DRAWN	VK	31 OCT 07
CHECK	RJ	31 OCT 07

THIS DRAWING COVERS A PROPRIETARY ITEM AND IS THE PROPERTY OF HONEYWELL. THIS DRAWING IS NOT TO BE COPIED OR USED WITHOUT THE PERMISSION OF HONEYWELL.

INTERPRET PER ANSI Y14.5M-1982 OTHER HONEYWELL ENGINEERING STANDARDS MAY APPLY

RASTER

Honeywell

TITLE
SWITCH - BASIC

SIZE	TYPE	DRAWING NAME	REV
B	I	311SM2-H2	7

SCALE - WEIGHT .006 LB MAX SHEET 1 OF 1