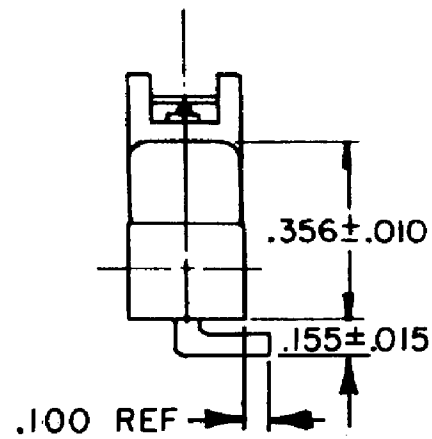
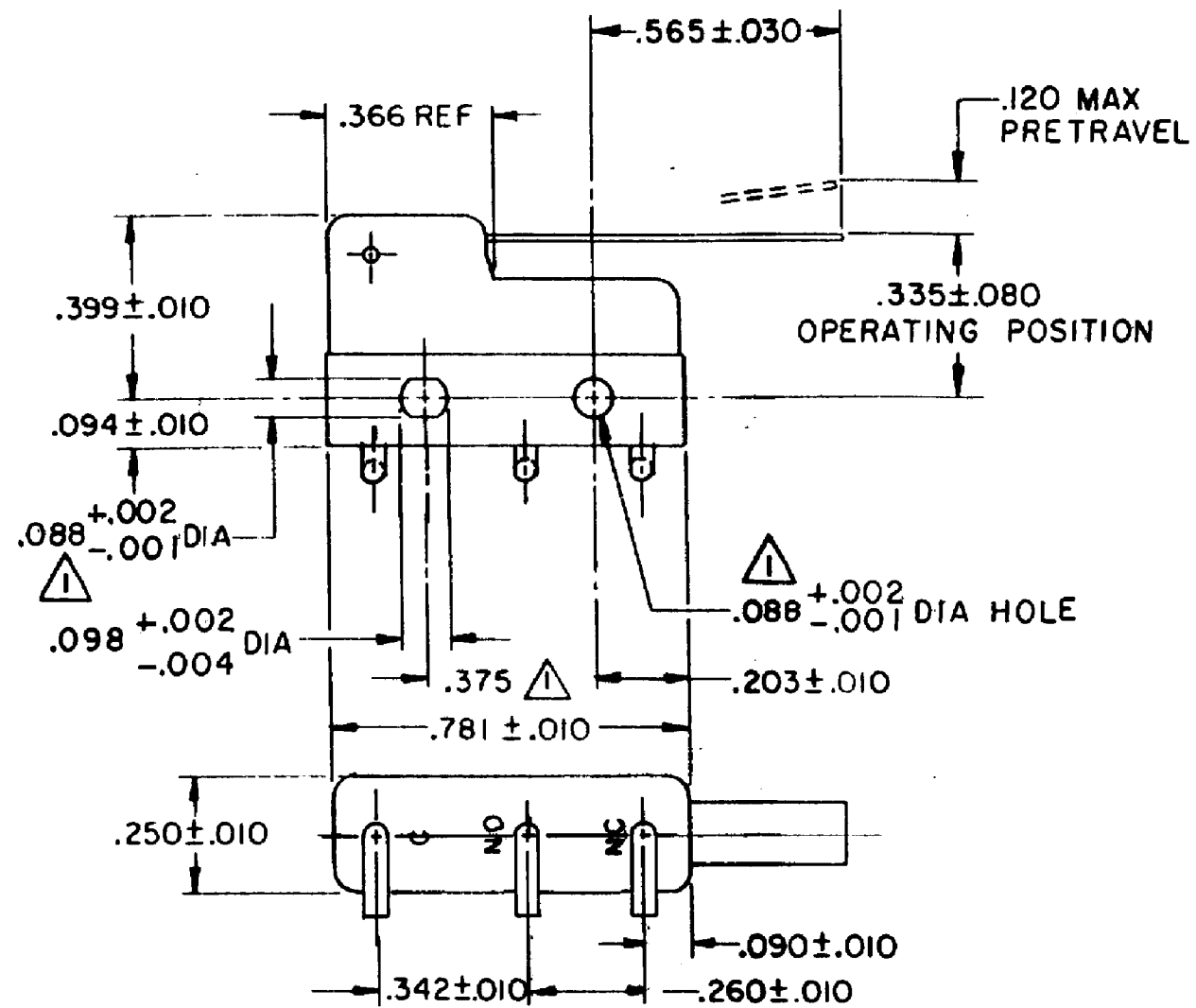
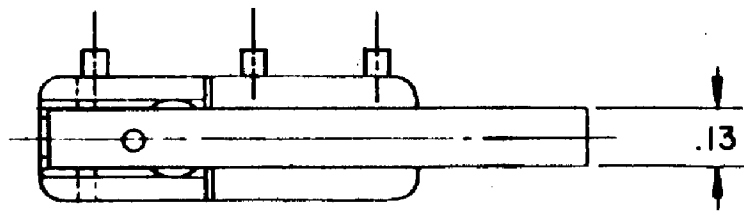


HONEYWELL  
PART NUMBER  
311SM2-H251  
PRODUCT CODE  
TZA1141

REV	DOCUMENT	CHANGED BY	CHECK
2	0038113	PRS 12JUN08	BLR



- NOTES:**
- 1 - MOUNTING HOLES WILL ACCEPT PINS OR SCREWS OF .087 MAX DIA ON .375 ± .002 CENTERS
  - 2 - SWITCH WILL WITHSTAND TEMPERATURE OF 250°F
  - 3 - TERMINALS ARE PLATED FOR SOLDERING

RELEASE NO. PR - 17078

REPLACES -

**CHARACTERISTICS**  
OPERATING FORCE -- 30 GRAM MAX  
RELEASE FORCE-- -- 5 GRAM MIN  
DIFFERENTIAL TRAVEL-- .027 MAX  
OVERTRAVEL-- .026 MIN

ELECTRICAL DATA		
CONTACT ARRANGEMENT SPDT		
30 VOLTS DC RATING		
	SEA LEVEL	50,000 FT
INDUCTIVE	3 AMP	2.5 AMP
RESISTIVE	5 AMP	5 AMP
MAXIMUM INRUSH 24 AMP		
APPROVALS	KEMA, CE	5A, 250V ~ T85 1E4
	UL, CSA	5A, 250 VAC
		CE
		UL

DESIGN UNITS: INCH  
TOLERANCES UNLESS NOTED:  
NO PLACE X ±  
ONE PLACE .X ±  
TWO PLACE .XX ±  
THREE PLACE .XXX ±  
FOUR PLACE .XXXX ±  
ANGLES ±

THIRD ANGLE PROJECTION

DRAWN	VK	31OCT 07
CHECK	RJ	31OCT 07
THIS DRAWING COVERS A PROPRIETARY ITEM AND IS THE PROPERTY OF HONEYWELL. THIS DRAWING IS NOT TO BE COPIED OR USED WITHOUT THE PERMISSION OF HONEYWELL.		
INTERPRET PER ANSI Y14.5M-1982 OTHER HONEYWELL ENGINEERING STANDARDS MAY APPLY		
RASTER		

<b>Honeywell</b>			
TITLE <b>SWITCH - BASIC</b>			
SIZE	TYPE	DRAWING NAME	REV
<b>B</b>	<b>I</b>	<b>311SM2-H251</b>	<b>2</b>
SCALE	-	WEIGHT .006 LB MAX	SHEET 1 OF 1