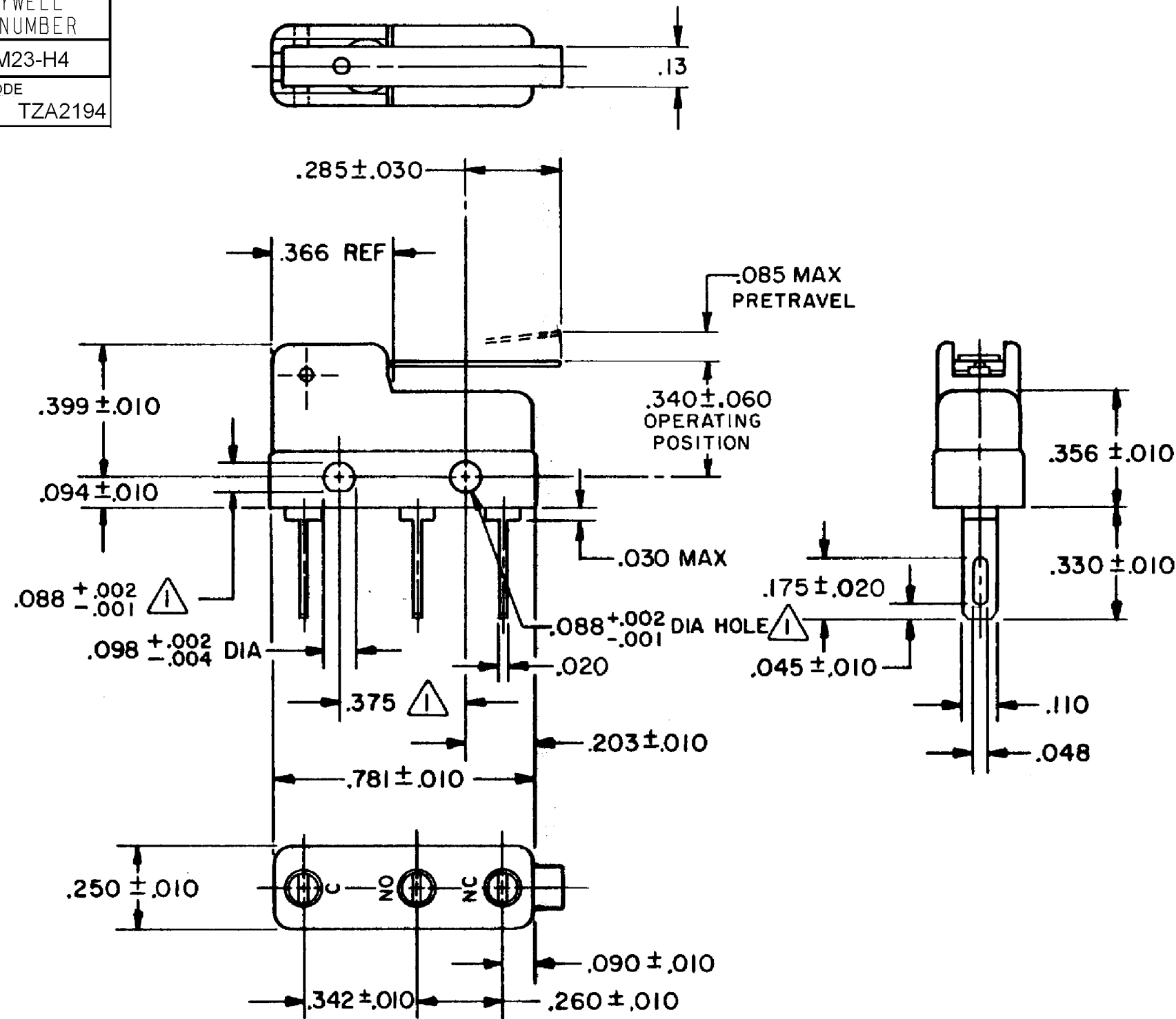


|                          |
|--------------------------|
| HONEYWELL<br>PART NUMBER |
| 311SM23-H4               |
| PRODUCT CODE<br>TZA2194  |

| REV | DOCUMENT | CHANGED BY  | CHECK |
|-----|----------|-------------|-------|
| 8   | 0038114  | KVS 03JUN08 | ASD   |



NOTES

- 1 MOUNTING HOLES WILL ACCEPT PINS OR SCREWS OF .087 MAX DIA ON .375 ± .002 CENTERS
- 2 - TERMINALS ARE PLATED FOR SOLDERING
- 3 - SWITCH WILL WITHSTAND TEMPERATURE OF 250° F
- 4 - MATING CONTACT SURFACES ARE 24 K SOLID GOLD OVERLAY

|             |           |
|-------------|-----------|
| RELEASE NO. | PR - 4736 |
| REPLACES    | -         |

| CHARACTERISTICS           |             |
|---------------------------|-------------|
| OPERATING FORCE - -       | 40 GRAM MAX |
| RELEASE FORCE - - - -     | 7 GRAM MIN  |
| DIFFERENTIAL TRAVEL - - - | .019 MAX    |
| OVERTRAVEL - - - - -      | .020 MIN    |

| ELECTRICAL DATA             |           |                    |
|-----------------------------|-----------|--------------------|
| CONTACT ARRANGEMENT<br>SPDT |           |                    |
| 30 VOLTS DC RATING          |           |                    |
|                             | SEA LEVEL | 50,000 FT          |
| INDUCTIVE                   | 1/2 AMP   | 1/2 AMP            |
| RESISTIVE                   | 1 AMP     | 1 AMP              |
| MAXIMUM INRUSH 2 AMP        |           |                    |
| APPROVALS                   | KEMA, CE  | 1A, 250V ~ T85 1E4 |
|                             | UL, CSA   | 1A, 125 VAC        |

|                          |
|--------------------------|
| DESIGN UNITS: INCH       |
| TOLERANCES UNLESS NOTED: |
| NO PLACE X ±             |
| ONE PLACE .X ±           |
| TWO PLACE .XX ±          |
| THREE PLACE .XXX ±       |
| FOUR PLACE .XXXX ±       |
| ANGLES ±                 |
| THIRD ANGLE PROJECTION   |

|  |    |           |
|--|----|-----------|
| DRAWN  | VK | 02 NOV 07 |
| CHECK  | RJ | 02 NOV 07 |
| THIS DRAWING COVERS A PROPRIETARY ITEM AND IS THE PROPERTY OF HONEYWELL. THIS DRAWING IS NOT TO BE COPIED OR USED WITHOUT THE PERMISSION OF HONEYWELL. |    |           |
| INTERPRET PER ANSI Y14.5M-1982 OTHER HONEYWELL ENGINEERING STANDARDS MAY APPLY   |    |           |
| RASTER   |    |           |

|                         |      |                    |              |
|-------------------------|------|--------------------|--------------|
| <b>Honeywell</b>        |      |                    |              |
| TITLE<br>SWITCH - BASIC |      |                    |              |
| SIZE                    | TYPE | DRAWING NAME       | REV          |
| B                       | I    | 311SM23-H4         | 8            |
| SCALE                   | -    | WEIGHT .006 LB MAX | SHEET 1 OF 1 |