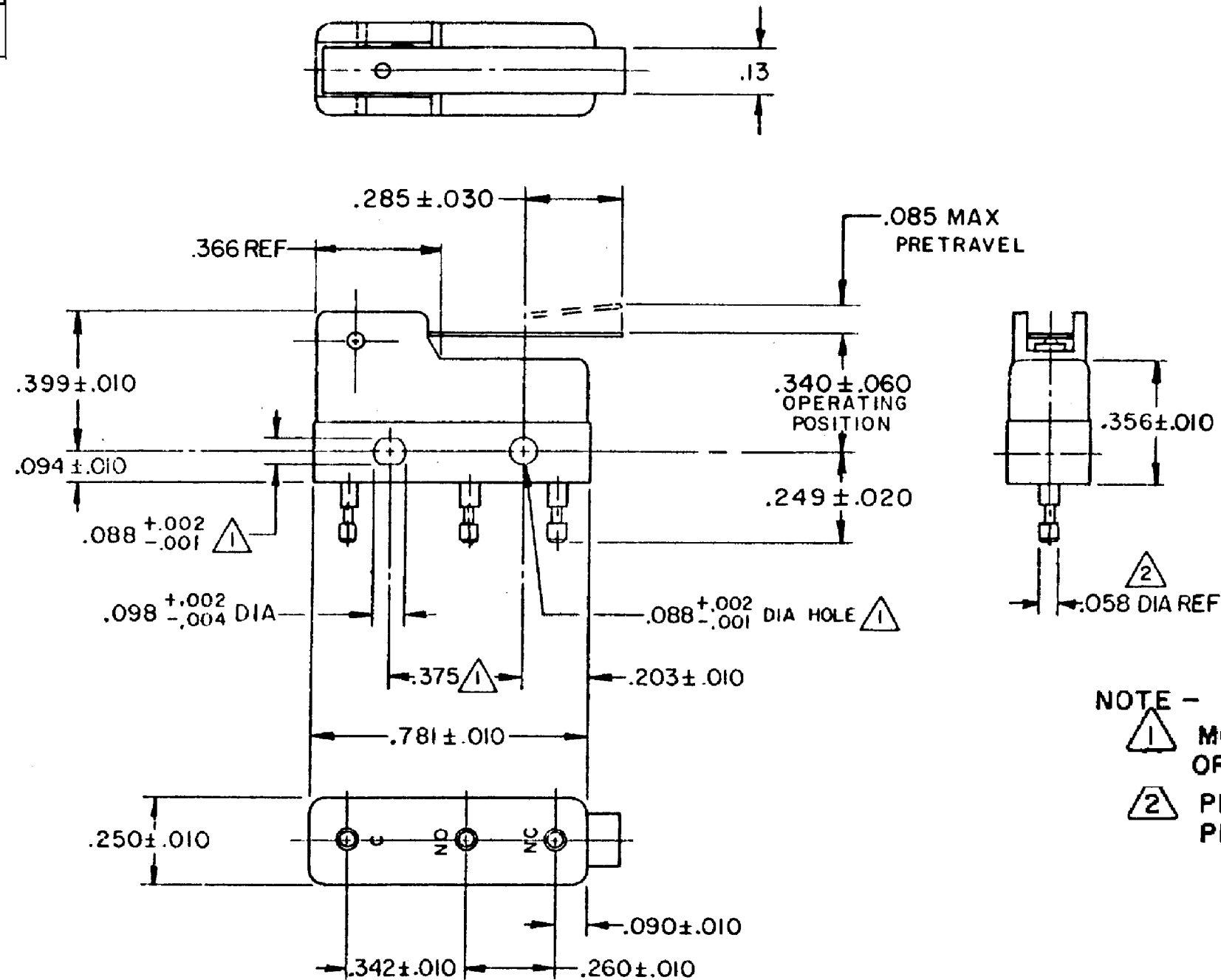


HONEYWELL  
PART NUMBER  
311SM1-H58  
PRODUCT CODE  
TZA1065

REV	DOCUMENT	CHANGED BY	CHECK
7	0038113	PRS 12JUN08	BLR



NOTE -  
 1 MOUNTING HOLES WILL ACCEPT PINS OR SCREWS OF .087 MAX DIA ON .375 ± .002 CENTERS  
 2 PLATED TERMINALS WILL ACCEPT "AMP INC" .058 DIA PIN RECEPTACLES.

RELEASE NO. PR-4536
REPLACES

CHARACTERISTICS
OPERATING FORCE -- 40 GRAM MAX
RELEASE FORCE -- 7 GRAM MIN
DIFFERENTIAL TRAVEL -- .019 MAX
OVERTRAVEL -- .011 MIN

ELECTRICAL DATA	
CONTACT ARRANGEMENT SPDT	
30 VOLTS DC RATING	
	SEA LEVEL 50,000 FT
INDUCTIVE	3 AMP 2.5 AMP
RESISTIVE	5 AMP 5 AMP
MAXIMUM INRUSH 24 AMP	
APPROVALS	KEMA, CE 5A, 250V ~ T85 1E4
	UL, CSA 5A, 250 VAC ~   BRAND L4

DESIGN UNITS: INCH
TOLERANCES UNLESS NOTED:
NO PLACE X ±
ONE PLACE .X ±
TWO PLACE .XX ±
THREE PLACE .XXX ±
FOUR PLACE .XXXX ±
ANGLES ±
THIRD ANGLE PROJECTION

DRAWN	JA	31 OCT 07
CHECK	RJ	31 OCT 07
THIS DRAWING COVERS A PROPRIETARY ITEM AND IS THE PROPERTY OF HONEYWELL. THIS DRAWING IS NOT TO BE COPIED OR USED WITHOUT THE PERMISSION OF HONEYWELL.		
INTERPRET PER ANSI Y14.5M-1982 OTHER HONEYWELL ENGINEERING STANDARDS MAY APPLY		
RASTER		

<b>Honeywell</b>			
TITLE SWITCH - BASIC			
SIZE	TYPE	DRAWING NAME	REV
B	I	311SM1-H58	7
SCALE	-	WEIGHT .006 LB MAX	SHEET 1 OF 1