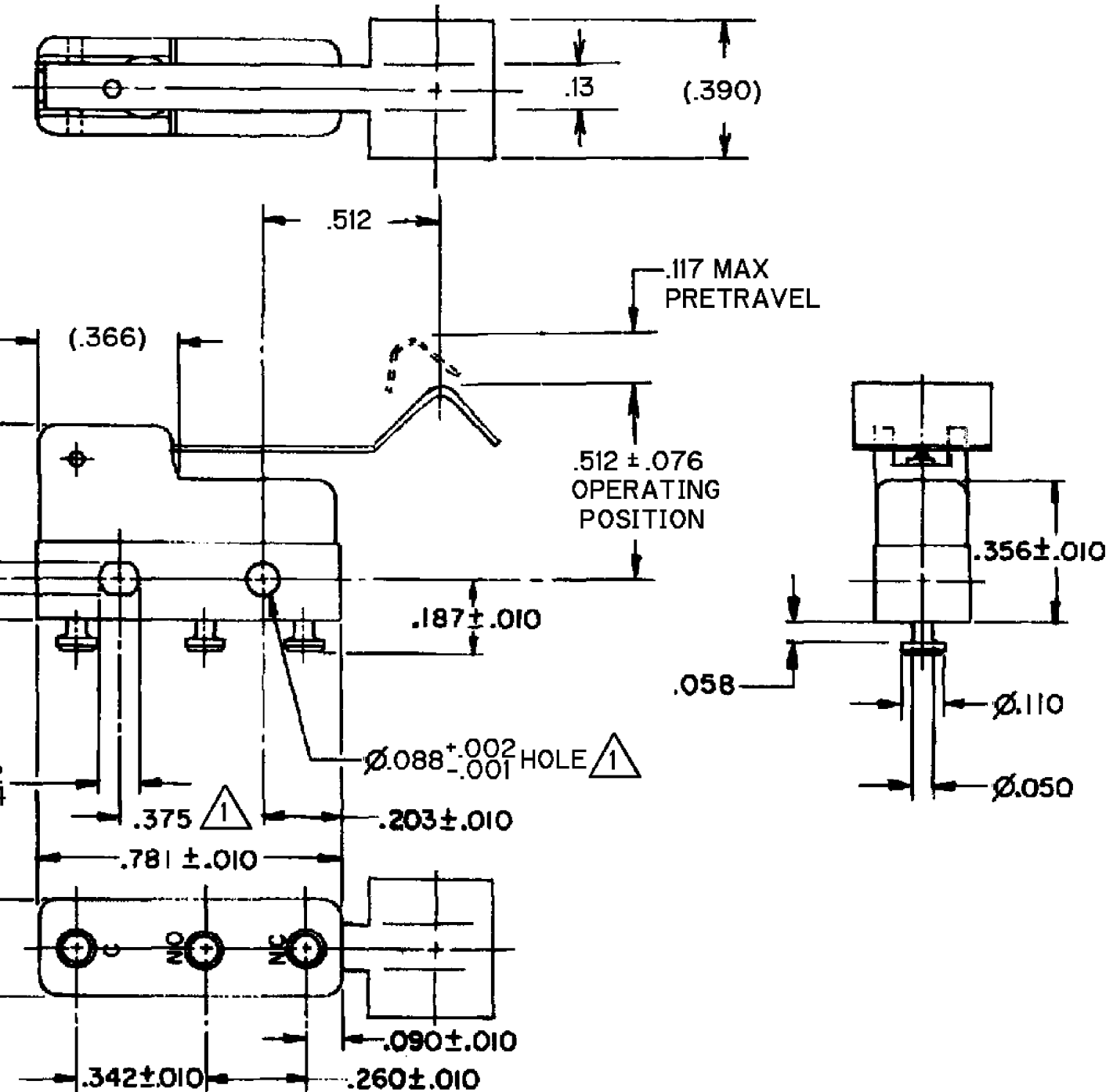


HONEYWELL  
PART NUMBER  
311SM1138-T  
PRODUCT CODE  
TZF1098

REV	DOCUMENT	CHANGED BY	CHECK
2	0038115	VS 28APR08	BLR



- NOTES
- 1 MOUNTING HOLES WILL ACCEPT PINS OR SCREWS OF Ø.087 MAX ON .375 ± .002 CENTERS
  - 2 - SWITCH WILL WITHSTAND TEMPERATURE OF 250°F
  - 3 - TERMINALS ARE PLATED FOR SOLDERING
  - 4 - MATING CONTACT SURFACES ARE 24K SOLID GOLD OVERLAY

RELEASE NO.	PR - 24082
REPLACES	X111734 - SM

CHARACTERISTICS	
OPERATING FORCE	31 GRAM MAX
RELEASE FORCE	5 GRAM MIN
DIFFERENTIAL TRAVEL	.025 MAX
OVERTRAVEL	.025 MIN

ELECTRICAL DATA		
CONTACT ARRANGEMENT SPDT		
30 VOLTS DC RATING		
	SEA LEVEL	50,000 FT
INDUCTIVE	1/2 AMP	1/2 AMP
RESISTIVE	1 AMP	1 AMP
MAXIMUM INRUSH 2 AMP		
KEMA, CE	1A, 250V ~ T85 1E4	CE
UL, CSA	1A, 125 VAC	UL, CSA

DESIGN UNITS: INCH
TOLERANCES UNLESS NOTED:
NO PLACE X ±
ONE PLACE .X ±
TWO PLACE .XX ±
THREE PLACE .XXX ±
FOUR PLACE .XXXX ±
ANGLES ±
THIRD ANGLE PROJECTION

DRAWN	VK	29 NOV 07
CHECK	RJ	29 NOV 07
THIS DRAWING COVERS A PROPRIETARY ITEM AND IS THE PROPERTY OF HONEYWELL. THIS DRAWING IS NOT TO BE COPIED OR USED WITHOUT THE PERMISSION OF HONEYWELL.		
INTERPRET PER ANSI Y14.5M-1982 OTHER HONEYWELL ENGINEERING STANDARDS MAY APPLY		
RASTER		

<b>Honeywell</b>			
TITLE <b>SWITCH - BASIC</b>			
SIZE	TYPE	DRAWING NAME	REV
<b>B</b>	<b>I</b>	<b>311SM1138-T</b>	<b>2</b>
SCALE	-	WEIGHT .006 LB MAX	SHEET 1 OF 1