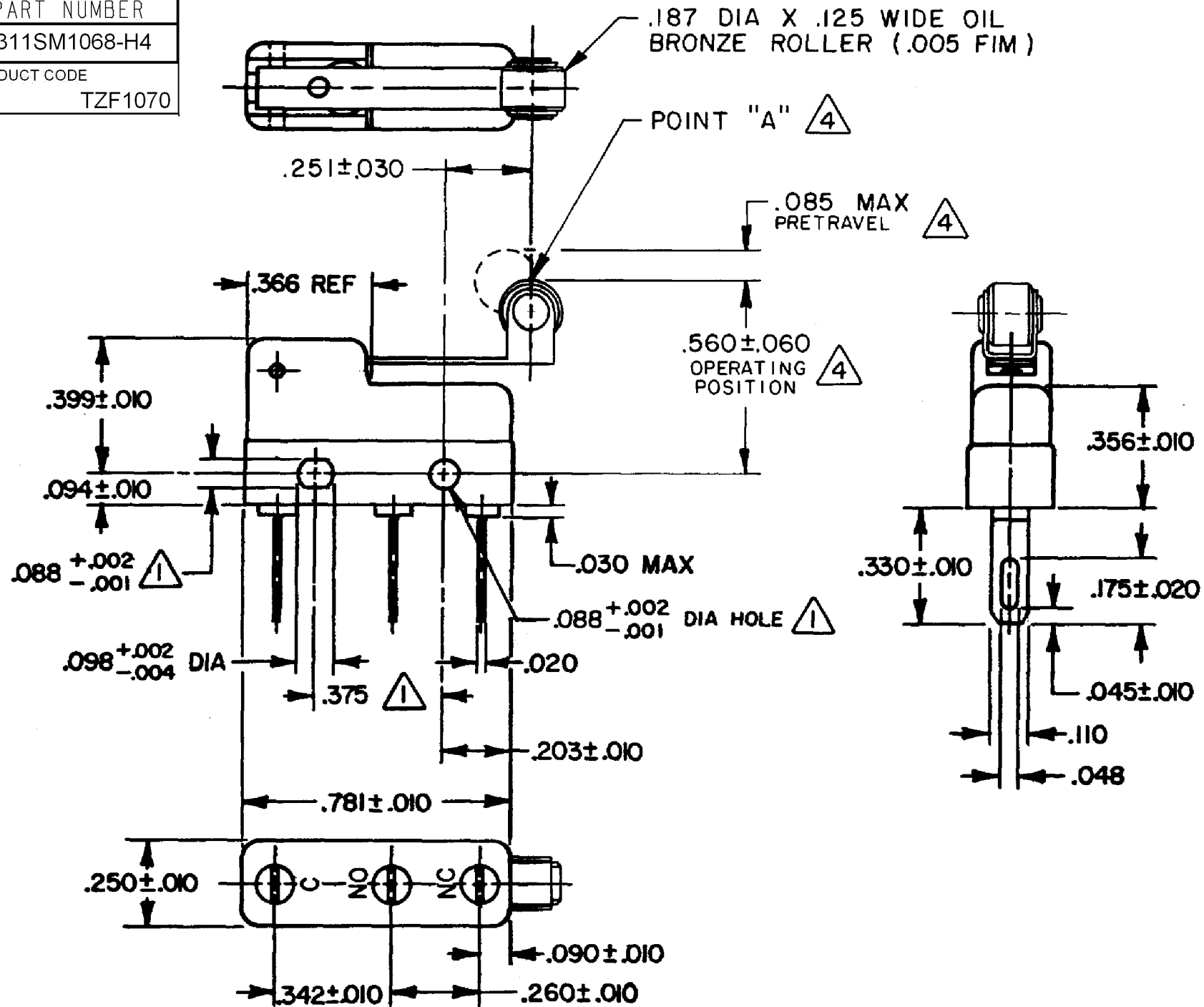


HONEYWELL  
PART NUMBER  
311SM1068-H4  
PRODUCT CODE  
TZF1070

REV	DOCUMENT	CHANGED BY	CHECK
3	0038445	SSK 14APR08	BLR



**NOTES**

- 1 MOUNTING HOLES WILL ACCEPT PINS OR SCREWS OF .087 MAX DIA ON .375 ± .002 CENTERS
- 2 - SWITCH WILL WITHSTAND TEMPERATURE OF 250°F
- 3 - MATING CONTACT SURFACES ARE OVERLAYS OF 24K SOLID GOLD AND GOLD ALLOY
- 4 CHARACTERISTICS TAKEN AT POINT "A"

RELEASE NO.	PR-14966
REPLACES	-

CHARACTERISTICS 4
OPERATING FORCE -- 40 GRAM MAX
RELEASE FORCE-- -- 7 GRAM MIN
DIFFERENTIAL TRAVEL-- -- .019 MAX
OVERTRAVEL - - - - .018 MIN

ELECTRICAL DATA
CONTACT ARRANGEMENT SPDT

DESIGN UNITS: INCH
TOLERANCES UNLESS NOTED:
NO PLACE X ±
ONE PLACE .X ±
TWO PLACE .XX ±
THREE PLACE .XXX ±
FOUR PLACE .XXXX ±
ANGLES ±

DRAWN	VK	25 FEB 08
CHECK	RJ	25 FEB 08
THIS DRAWING COVERS A PROPRIETARY ITEM AND IS THE PROPERTY OF HONEYWELL. THIS DRAWING IS NOT TO BE COPIED OR USED WITHOUT THE PERMISSION OF HONEYWELL.		
INTERPRET PER ANSI Y14.5M-1982 OTHER HONEYWELL ENGINEERING STANDARDS MAY APPLY		

<b>Honeywell</b>			
TITLE <b>SWITCH - BASIC</b>			
SIZE	TYPE	DRAWING NAME	REV
<b>B</b>	<b>I</b>	<b>311SM1068-H4</b>	<b>3</b>
SCALE	-	WEIGHT .006 LB MAX	SHEET 1 OF 1

APPROVALS	UL, CSA	0.1A 125 VAC 30 VDC			BRAND	L171
-----------	---------	---------------------	--	--	-------	------

THIRD ANGLE PROJECTION