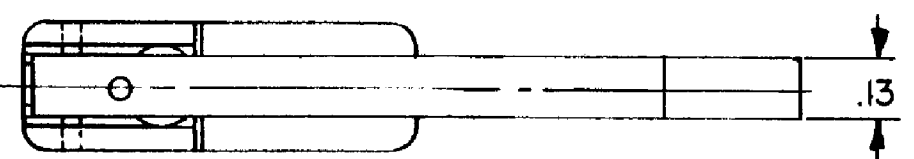


HONEYWELL  
PART NUMBER  
311SM1005-T  
PRODUCT CODE  
TZA2909

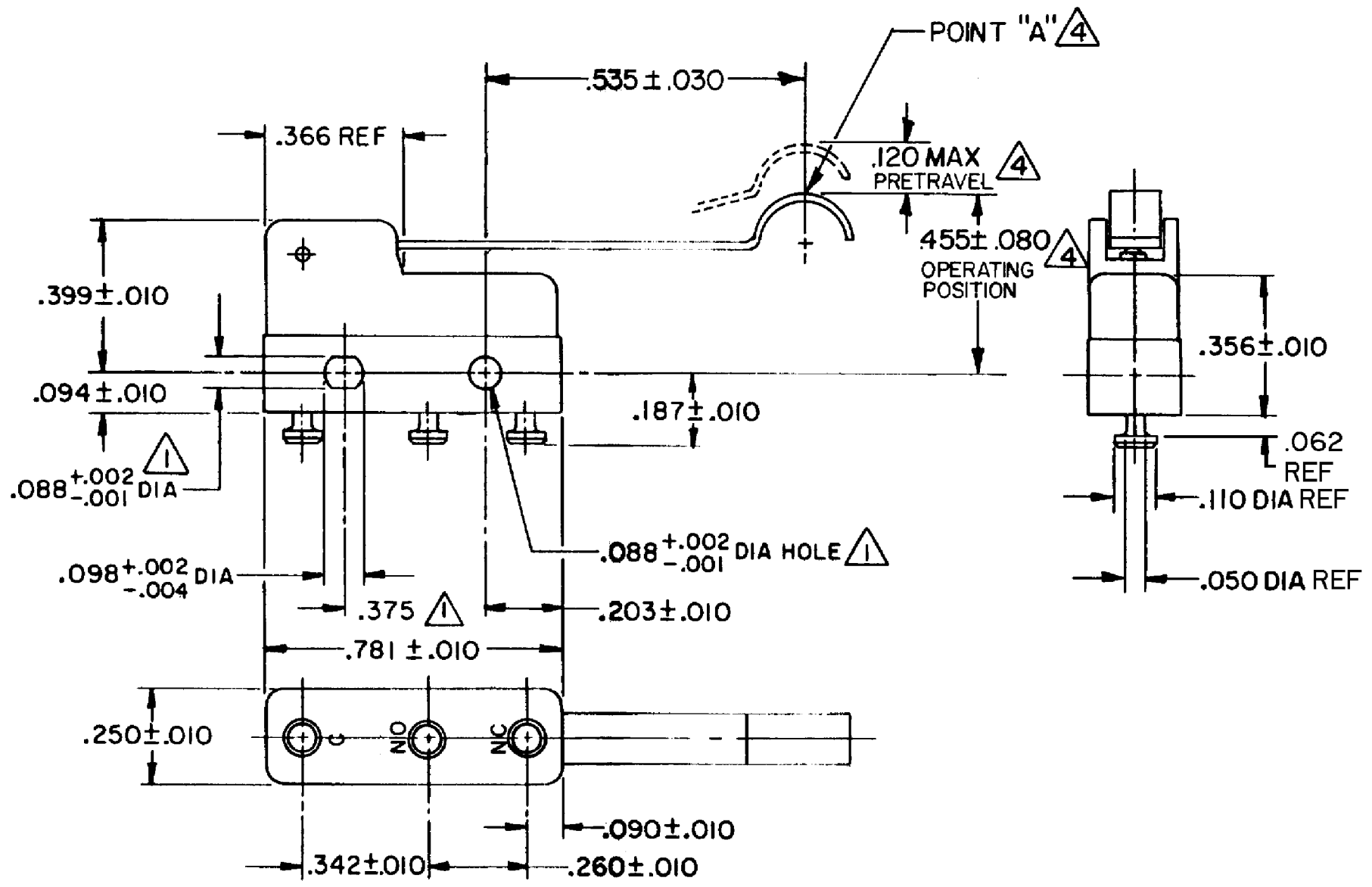
REV	DOCUMENT	CHANGED BY	CHECK
3	0038445	SSK 14APR08	BLR



B

A

A



NOTES

- ① MOUNTING HOLES WILL ACCEPT PINS OR SCREWS OF .087 MAX DIA ON .375±.002 CENTERS
- 2 - TERMINALS ARE PLATED FOR SOLDERING
- 3 - SWITCH WILL WITHSTAND A TEMPERATURE OF 250°F
- ④ CHARACTERISTICS TAKEN AT POINT "A"
- 5 - MATING CONTACT SURFACES ARE OVERLAYS OF 24K SOLID GOLD AND GOLD ALLOY

RELEASE NO.	PR-12734
REPLACES	-

CHARACTERISTICS ④
OPERATING FORCE -- 30 GRAM MAX
RELEASE FORCE-- 5 GRAM MIN
DIFFERENTIAL TRAVEL-- .027 MAX
OVERTRAVEL - .026 MIN

ELECTRICAL DATA
CONTACT ARRANGEMENT SPDT
APPROVALS UL, CSA 0.1A 125 VAC 30 VDC   BRAND L171

DESIGN UNITS: INCH
TOLERANCES UNLESS NOTED:
NO PLACE X ±
ONE PLACE .X ± 0.030
TWO PLACE .XX ± 0.015
THREE PLACE .XXX ± 0.005
FOUR PLACE .XXXX ±
ANGLES ±
THIRD ANGLE PROJECTION

DRAWN	VK	25 FEB 08
CHECK	RJ	25 FEB 08
THIS DRAWING COVERS A PROPRIETARY ITEM AND IS THE PROPERTY OF HONEYWELL. THIS DRAWING IS NOT TO BE COPIED OR USED WITHOUT THE PERMISSION OF HONEYWELL.		
INTERPRET PER ANSI Y14.5M-1982 OTHER HONEYWELL ENGINEERING STANDARDS MAY APPLY		
RASTER		

<b>Honeywell</b>			
TITLE SWITCH - BASIC			
SIZE	TYPE	DRAWING NAME	REV
<b>B</b>	<b>I</b>	<b>311SM1005-T</b>	<b>3</b>
SCALE	-	WEIGHT .006 LB MAX	SHEET 1 OF 1