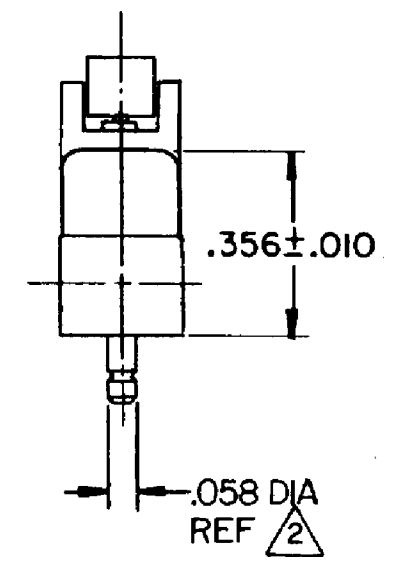
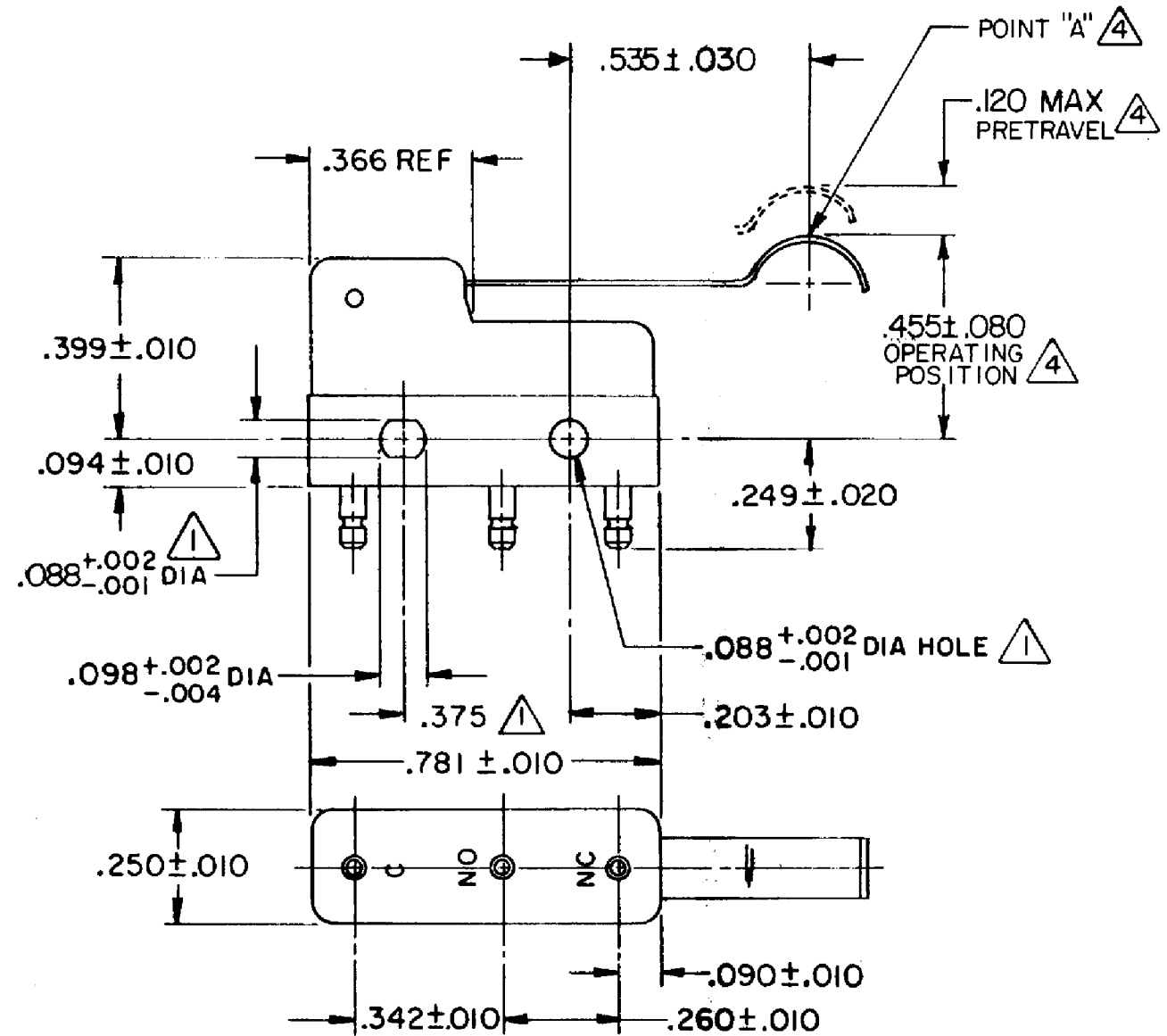
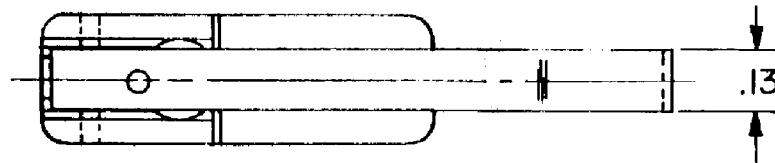


HONEYWELL  
PART NUMBER  
311SM1005-H58  
PRODUCT CODE  
TZD3005

REV	DOCUMENT	CHANGED BY	CHECK
3	0038445	SSK 14APR08	BLR



- NOTES
- ① MOUNTING HOLES WILL ACCEPT PINS OR SCREWS OF .087 MAX DIA ON .375±.002 CENTERS
  - ② PLATED TERMINALS WILL ACCEPT "AMP INC" .058 DIA RECEPTACLES
  - ③ SWITCH WILL WITHSTAND A TEMPERATURE OF 250°F
  - ④ CHARACTERISTICS TAKEN AT POINT "A"
  - ⑤ MATING CONTACT SURFACES ARE OVERLAYS OF 24K SOLID GOLD AND GOLD ALLOY

RELEASE NO.	PR - 13597
REPLACES	-

CHARACTERISTICS	ELECTRICAL DATA
OPERATING FORCE -- 30 GRAM MAX	CONTACT ARRANGEMENT SPDT
RELEASE FORCE -- 5 GRAM MIN	
DIFFERENTIAL TRAVEL -- .027 MAX	
OVERTRAVEL -- .026 MIN	

APPROVALS	UL, CSA	0.1A 125 VAC 30 VDC	UL	CS	BRAND	L171
-----------	---------	---------------------	----	----	-------	------

DESIGN UNITS: INCH
TOLERANCES UNLESS NOTED:
NO PLACE X ±
ONE PLACE .X ±
TWO PLACE .XX ±
THREE PLACE .XXX ±
FOUR PLACE .XXXX ±
ANGLES ±
THIRD ANGLE PROJECTION

DRAWN	VK	25 FEB 08
CHECK	RJ	25 FEB 08
THIS DRAWING COVERS A PROPRIETARY ITEM AND IS THE PROPERTY OF HONEYWELL. THIS DRAWING IS NOT TO BE COPIED OR USED WITHOUT THE PERMISSION OF HONEYWELL.		
INTERPRET PER ANSI Y14.5M-1982 OTHER HONEYWELL ENGINEERING STANDARDS MAY APPLY		
RASTER		

<b>Honeywell</b>			
TITLE <b>SWITCH - BASIC</b>			
SIZE	TYPE	DRAWING NAME	REV
<b>B</b>	<b>I</b>	<b>311SM1005-H58</b>	<b>3</b>
SCALE	-	WEIGHT .006 LB MAX	SHEET 1 OF 1