



Headers

to Type 113 and Type 114

- Type 190 page 122
- Type 191 page 120
- Type 382 page 122
- Type 383 page 120

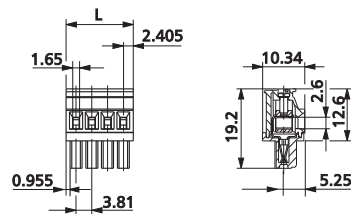
Type 113

Screw type terminal block, pluggable, centerline 3.81 mm / 0.150 inches, wire entry on the straight side, perpendicular to plug direction, lift system, contact system with integrated wire protection

Technical Data

V / A / AWG	300 / 11 / 28 - 16		
0.08 - 1.5 mm ²	130 V / 2.5 kV / 11 A		
Insulation co-ordination according to IEC 664-1	Clearance and creepage distances min. 2.9 mm		
Insulating material class	CTI 600		
Overvoltage category	III	III	II
Pollution degree	3	2	2
Rated voltage	200	500	500
Rated test voltage	2.5	4	2.5
Protection category according to IEC 529	IP20		
Tightening torque UL	3 lb-in max.		
Min. insul. strip length	7 mm		
Solder pin dimension	1 mm		
Recommended pc board hole dia.	Ø 1.3 mm		
Solder pin length	4 mm		
Pole size	2 - 21		
Color	black		

Dimensions in mm 1 mm = 0.0394 in.



L = (pole size - 1) x centerline + 4.81 mm / 0.189 inches

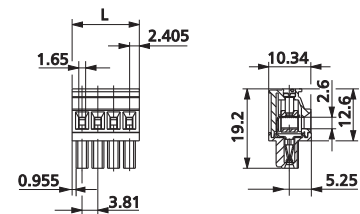
Type 114

Screw type terminal block, pluggable, centerline 3.81 mm / 0.150 inches, wire entry on the rippled side, perpendicular to plug direction, lift system, contact system with integrated wire protection

Technical Data

V / A / AWG	300 / 11 / 28 - 16		
0.08 - 1.5 mm ²	130 V / 2.5 kV / 11 A		
Insulation co-ordination according to IEC 664-1	Clearance and creepage distances min. 2.9 mm		
Insulating material class	CTI 600		
Overvoltage category	III	III	II
Pollution degree	3	2	2
Rated voltage	200	500	500
Rated test voltage	2.5	4	2.5
Protection category according to IEC 529	IP20		
Tightening torque UL	3 lb-in max.		
Min. insul. strip length	7 mm		
Solder pin dimension	1 mm		
Recommended pc board hole dia.	Ø 1.3 mm		
Solder pin length	4 mm		
Pole size	2 - 21		
Color	black		

Dimensions in mm 1 mm = 0.0394 in.



L = (pole size - 1) x centerline + 4.81 mm / 0.189 inches

Part numbers (P/N)

(informations: page 60)

Type 113

centerline 3.81 mm / 0.150 inches

P/N 311131

	02	03	04	05	06	07	08
	09	10	11	12	13	14	15
	17	18	19	20	21		

Complete the part number by adding the pole size.

- Standard pole sizes
- Available on demand. Minimum order quantity 5000 pieces per item.

Part numbers (P/N)

(informations: page 60)

Type 114

centerline 3.81 mm / 0.150 inches

P/N 311141

	02	03	04	05	06	07	08
	09	10	11	12	13	14	15
	17	18	19	20	21		

Complete the part number by adding the pole size.

- Standard pole sizes
- Available on demand. Minimum order quantity 5000 pieces per item.