

Terminal blocks

to **Type 017**

- ASP025** page 51
- Type 007** page 91
- Type 026** page 127
- Type 077** page 91
- Type 107** page 92

to **Type 027**

- Type 007** page 91
- Type 026** page 127
- Type 077** page 91
- Type 107** page 92
- Type 137** page 93

Note for Type 017 and Type 027

Packaging for automated processing is available on demand. Please do not hesitate to contact us.

Type 017

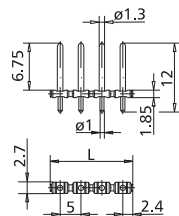
Header, centerline 5 mm / 0.197 inches, vertical mounting, designed for THR, optional Tape on Reel packaging for automated processing, round contact pins 1.3 mm / 0.051 inches

Technical Data

	V / A	300 / 15
	V / A	300 / 15
		250 V / 4 kV / 10 A

Insulation co-ordination according to IEC 664-1			
Clearance and creepage distances	min. 3.7 mm		
Insulating material class	CTI 400		
Overvoltage category	III	III	II
Pollution degree	3	2	2
Rated voltage	250	500	500
Rated test voltage	2.5	4	2.5
Protection category according to IEC 529			
	IP00		
Solder pin dimension	1 mm		
Recommended pc board hole dia.	Ø 1.3 mm		
Solder pin length	3.4 mm		
Pole size	2 - 24		
Color	black		

Dimensions in mm 1 mm = 0.0394 in.



L = (pole size - 1) x centerline + 4.8 mm / 0.189 inches

Type 027

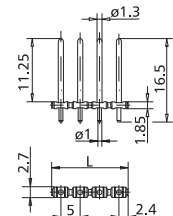
Header, centerline 5 mm / 0.197 inches, vertical mounting, designed for THR, optional Tape on Reel packaging for automated processing, round contact pins 1.3 mm / 0.051 inches

Technical Data

	V / A	300 / 15
	V / A	300 / 15
		250 V / 4 kV / 10 A

Insulation co-ordination according to IEC 664-1			
Clearance and creepage distances	min. 3.7 mm		
Insulating material class	CTI 400		
Overvoltage category	III	III	II
Pollution degree	3	2	2
Rated voltage	250	500	500
Rated test voltage	2.5	4	2.5
Protection category according to IEC 529			
	IP00		
Solder pin dimension	1 mm		
Recommended pc board hole dia.	Ø 1.3 mm		
Solder pin length	3.4 mm		
Pole size	2 - 24		
Color	black		

Dimensions in mm 1 mm = 0.0394 in.



L = (pole size - 1) x centerline + 4.8 mm / 0.189 inches

Part numbers (P/N)

(informations: page 111)

Type 017

centerline 5 mm / 0.197 inches

P/N 310171

	02	03	04	05	06	07	08
	09	10	11	12	13	14	15
	17	18	19	20	21	22	23
	24						

Complete the part number by adding the pole size.

Part numbers (P/N)

(informations: page 111)

Type 027

centerline 5 mm / 0.197 inches

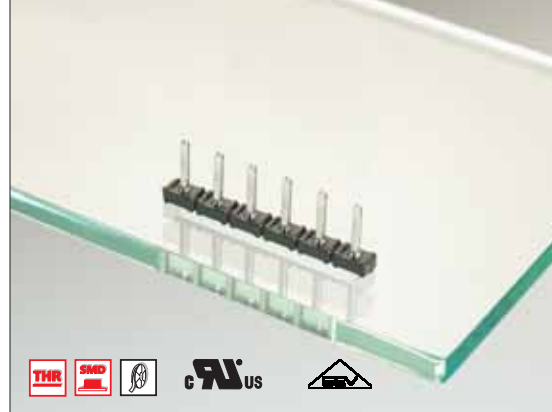
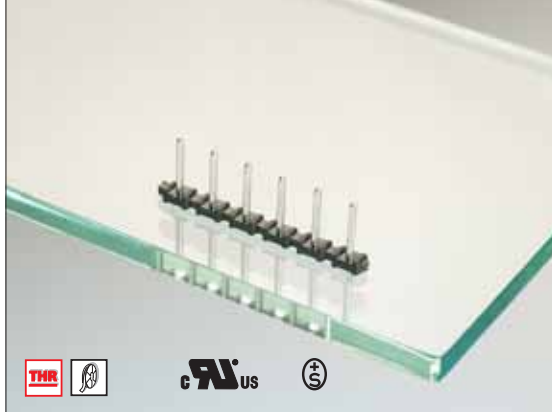
P/N 310271

	02	03	04	05	06	07	08
	09	10	11	12	13	14	15
	17	18	19	20	21	22	23
	24						

Complete the part number by adding the pole size.

- Standard pole sizes
- Available on demand. Minimum order quantity 5000 pieces per item.

- Standard pole sizes
- Available on demand. Minimum order quantity 5000 pieces per item.



Terminal blocks

to Type 046
 Type 157 page 93

to Type 048
 Type 207 page 94

Note for Type 046
 Packaging for automated processing is available on demand.
 Please do not hesitate to contact us.

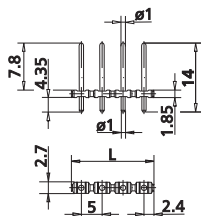
Type 046

Header, centerline 5 mm / 0.197 inches, vertical mounting, designed for THR, optional Tape on Reel packaging for automated processing, round contact pins 1.3 mm / 0.051 inches

Technical Data

V / A	300 / 10		
250 V / 4 kV / 10 A			
Insulation co-ordination according to IEC 664-1	CTI 400		
Clearance and creepage distances	min. 4 mm		
Insulating material class	CTI 400		
Overvoltage category	III	III	II
Pollution degree	3	2	2
Rated voltage	250	500	500
Rated test voltage	2.5	4	2.5
Protection category according to IEC 529	IP00		
Solder pin dimension	1 mm		
Recommended pc board hole dia.	Ø 1.3 mm		
Solder pin length	4.35 mm		
Pole size	2 - 24		
Color	black		

Dimensions in mm 1 mm = 0.0394 in.



L = (pole size - 1) x centerline + 4.8 mm / 0.189 inches

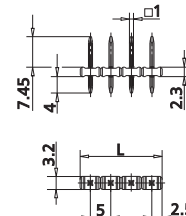
Type 048

Header, centerline 5 mm / 0.197 inches, vertical mounting, square contact pins 1 mm / 0.039 inches

Technical Data

V / A	300 / 15		
250 V / 4 kV / 16 A			
Insulation co-ordination according to IEC 664-1	CTI 400		
Clearance and creepage distances	min. 4 mm		
Insulating material class	CTI 400		
Overvoltage category	III	III	II
Pollution degree	3	2	2
Rated voltage	250	500	500
Rated test voltage	2.5	4	2.5
Protection category according to IEC 529	IP00		
Solder pin dimension	1.0 x 1.0 mm		
Recommended pc board hole dia.	Ø 1.5 mm		
Solder pin length	4 mm		
Pole size	2 - 24		
Color	black		

Dimensions in mm 1 mm = 0.0394 in.



L = (pole size - 1) x centerline + 5 mm / 0.197 inches

Part numbers (P/N)

(informations: page 111)

Type 046

centerline 5 mm / 0.197 inches

P/N 310461

	02	03	04	05	06	07	08
09	10	11	12	13	14	15	16
17	18	19	20	21	22	23	24

Complete the part number by adding the pole size.

Part numbers (P/N)

(informations: page 111)

Type 048

centerline 5 mm / 0.197 inches

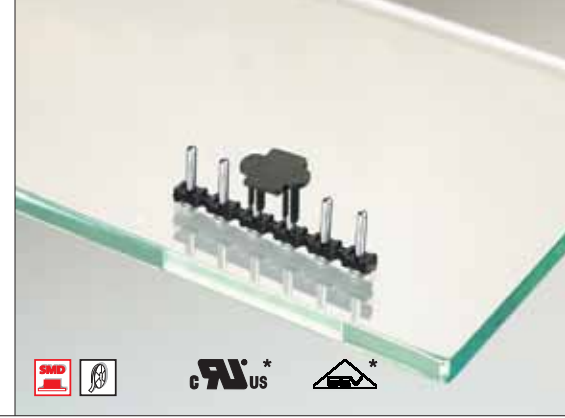
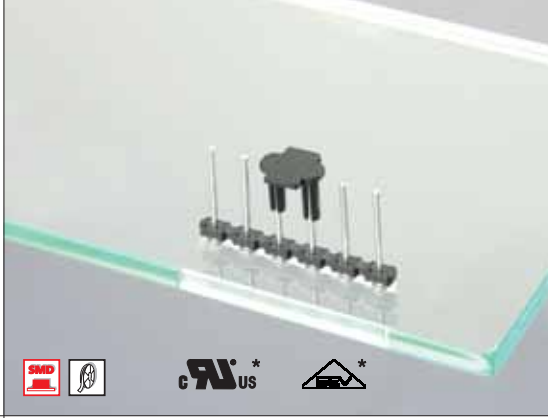
P/N 310481

	02	03	04	05	06	07	08
09	10	11	12	13	14	15	16
17	18	19	20	21	22	23	24

Complete the part number by adding the pole size.

- Standard pole sizes
- Available on demand. Minimum order quantity 5000 pieces per item.

- Standard pole sizes
- Available on demand. Minimum order quantity 5000 pieces per item.



Terminal blocks

to **Type 318**
Type 157 page 93

to **Type 417**
ASP025 page 51
Type 007 page 91
Type 077 page 91
Type 107 page 92

Type 318

Header, centerline 5 mm / 0.197 inches, vertical mounting, designed for SMT, Tape on Reel packaging for automated processing, round contact pins 1.02 mm / 0.040 inches

Technical Data

130 V / 2.5 kV / 10 A

Insulation co-ordination according to IEC 664-1			
Clearance and creepage distances	min. 2.5 mm		
Insulating material class	CTI 400		
Overvoltage category	III	III	II
Pollution degree	3	2	2
Rated voltage	160	320	320
Rated test voltage	2.5	4	2.5
Protection category according to IEC 529			
	IP00		
Solder pin dimension	2.5 mm		
Pole size	2 - 12		
Color	black		

Type 417

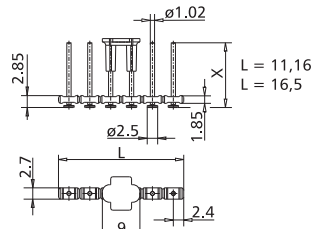
Header, centerline 5 mm / 0.197 inches, vertical mounting, designed for SMT, Tape on Reel packaging for automated processing, round contact pins 1.3 mm / 0.051 inches

Technical Data

130 V / 2.5 kV / 12 A

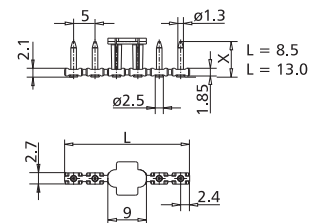
Insulation co-ordination according to IEC 664-1			
Clearance and creepage distances	min. 2.5 mm		
Insulating material class	CTI 400		
Overvoltage category	III	III	II
Pollution degree	3	2	2
Rated voltage	160	320	320
Rated test voltage	2.5	4	2.5
Protection category according to IEC 529			
	IP00		
Solder pin dimension	2.5 mm		
Pole size	2 - 12		
Color	black		

Dimensions in mm 1 mm = 0.0394 in.



L = (pole size - 1) x centerline + 4.8 mm / 0.189 inches

Dimensions in mm 1 mm = 0.0394 in.



L = (pole size - 1) x centerline + 4.8 mm / 0.189 inches

Part numbers (P/N)

(informations: page 111)

Type 318

centerline 5 mm / 0.197 inches

P/N 313181

Complete the part number by adding the pole size.

	02	03	04	05	06	07	08
09	10	11	12	13	14	15	16
17	18	19	20	21	22	23	24

* approval pending

- Standard pole sizes
- Available on demand. Minimum order quantity 5000 pieces per item.

Part numbers (P/N)

(informations: page 111)

Type 417

centerline 5 mm / 0.197 inches

P/N 314171

Complete the part number by adding the pole size.

	02	03	04	05	06	07	08
09	10	11	12				

* approval pending

- Standard pole sizes
- Available on demand. Minimum order quantity 5000 pieces per item.