

Color-Keyed®

Connectors Code Copper 600 Volt Applications



Pigtail Connectors



Hex head screws will be furnished if specified. To order, add prefix H to catalogue number. On all except 14-10 and 10-8 code sizes.

Cat. No.	Cable Size	Fig.	Dimensions (in.)	
			A	J
31305	10 to 8	A	1/2	17/32
31307	8 to 6	B	3/4	27/32
31309	6 to 4	B	7/8	1 1/32
31311	4 to 2	B	1 1/16	1 1/4
31313	1 to 2/0	B	1 3/16	1 1/2
31315	2/0 to 4/0	B	1 5/16	1 25/32

For torque requirements see page 162.



Fig. A

Fig. B



Stud Connectors



Each connector will accommodate a wide range of conductor sizes. Installation is simple and the convenient pigtail is easy to tape.

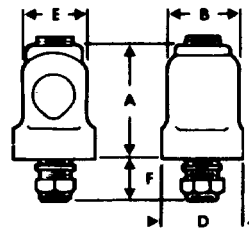
Hex head screws will be furnished if specified. To order, add prefix H to catalogue number. On all except 14-10 and 10-8 code sizes.

Type MS

Cat. No.	Cable Size	Dimensions (in.)						Stud Size
		G	A	B	D	E	F	
31007-T	4 to 1	3/8-16	1 1/8	25/32	3/8	5/8	3/4	3/8-16
31009-T	1 to 2/0	3/8-16	1 1/8	7/8	1	3/4	3/4	3/8-16
31011-T	2/0 to 4/0	1/2-13	1 1/8	1 1/16	1 3/16	7/8	1	1/2-13
31013-T	4/0 to 300	1/2-13	1 1/8	1 3/16	1 3/8	1 1/16	1	1/2-13
31015-T	300 to 500	1/2-13	2 5/8	1 5/16	1 1/2	1 1/4	1	1/2-13

Sizes listed are standard, but studs can be furnished to the length and diameter required for specific applications.

For torque requirements see page 162.



Color-Keyed[®]

Connectors Code Copper 600 Volt Applications



Stud Connectors (continued)



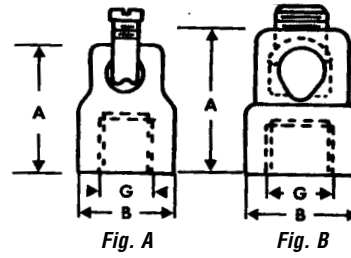
Standard tapping is shown in diagrams. Other tapping can be furnished for specific requirements.

Hex head screws will be furnished if specified. To order, add prefix H to catalogue number. On all except 14-8 and 8-4 code sizes.

Female—Type FL

Cat. No.	Cable Size	Fig.	Dimensions (in.)			Stud Size
			G	A	B	
31261 [†]	14 to 8	A	$\frac{3}{8}$ —16	$1\frac{3}{32}$	$\frac{5}{8}$	$\frac{3}{8}$ —16
31262 [†]	8 to 4	A	$\frac{3}{8}$ —16	$1\frac{1}{16}$	$\frac{5}{8}$	$\frac{3}{8}$ —16
31263	4 to 1	B	$\frac{3}{8}$ —16	$1\frac{15}{32}$	$\frac{3}{4}$	$\frac{3}{8}$ —16
31265	4 to 1	B	$\frac{1}{2}$ —13	$1\frac{15}{32}$	$\frac{3}{4}$	$\frac{1}{2}$ —13
31267	2/0 to 4/0	B	$\frac{1}{2}$ —13	$2\frac{3}{16}$	$1\frac{3}{16}$	$\frac{1}{2}$ —13

[†] With Filister Head Screw



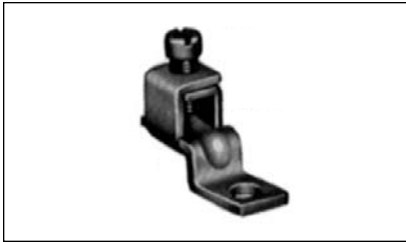
INSTALLATION AIDS AND TOOLS

Color-Keyed®

Connectors for Code Copper Cables



Lug-It® Lugs—One Hole, Offset Tongue



Lug-It® connectors are designed to grip the cable firmly between the strong body and the serrated copper tongue. Double laps at the top give greater thread strength and lock the screw when it is tight. The copper tongue makes a low resistance terminal.

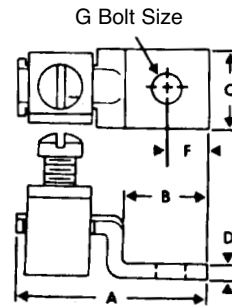
Cat. No.	Cable Size	Dimensions (in.)					
		G	A	B	C	D	F
35301	14 to 6	#10	1 ¹ / ₁₆	1/2	3/8	.064	7/32
35401	8 to 2	1/4	1 ¹ / ₁₆	5/8	1/2	.081	1/4
*35501†	4 to 2/0	1/4	1 ¹ / ₁₆	13/16	3/4	.101	3/8
*35601†	1/0 to 4/0	3/8	2 ¹ / ₃₂	1 ¹ / ₂	1	.128	1/2

Add suffix *G* to above Cat. No.'s for lug connector with green screw for grounding identification.

* Aluminum body

† Hex head bolt

For torque requirements, see page 162.



Cone Screw Lugs

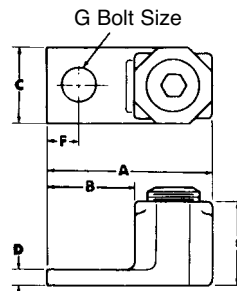


The conically shaped screw compresses the copper conductor so that each strand is forced to carry its own share of the load. Equal pressure is exerted on each conductor strand and the cone screw assures high pull-out and low resistance.

Cat. No.	Wire Range	Dimensions (in.)							
		G	A	B	C	D	E	F	
71010-TB	4-2/0	3/8	1 ² / ₃₂	2 ¹ / ₃₂	2 ³ / ₃₂	3/16	2 ⁵ / ₃₂	3/8	
71014	2-4/0	3/8	1 7/8	2 ⁹ / ₃₂	1 ⁵ / ₁₆	3/16	3 ¹ / ₃₂	3/8	
71015	1-250	3/8	2 1/2	2 ⁹ / ₃₂	1	7/32	1	3/8	
71020-TB	2/0-500	1/2	2 3/4	1 1/4	1 ¹ / ₂	9/32	1 ¹⁵ / ₃₂	9/16	

Add suffix *G* to lug Cat. No. 71010-TB, and 71014 for lug with green screw for grounding identification.

For torque requirements, see page 162.



Color-Keyed[®] Connectors for Code Copper Cables

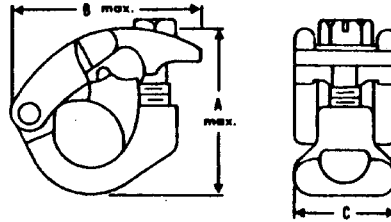


Hinjon[®] Junior Tee-Parallel Taps



Hinjon Junior taps are the most economical, easiest to install, approved connector for large to small branch taps. Jaws with all-around-grip automatically adjust to size of main and branch. Fast, simple installation is accomplished with screw driver or pliers and fitting is easily taped.

Cat. No.	Cable Size		Dimensions (in.)		
	Main	Branch	A	B	C
35107	8 to 4	14 to 8	1 ¹ / ₁₆	7 ⁷ / ₈	5 ⁵ / ₈
35109	4 to 1/0	14 to 4	1 ¹ / ₄	1	1 ¹ / ₁₆
35111	1/0 to 4/0	14 to 4	1 ¹ / ₂	1 ¹ / ₈	2 ⁷ / ₃₂
35112		8 to 1	1 ¹ / ₂	1 ¹ / ₁₆	2 ⁷ / ₃₂
35115	300 to 500	14 to 4	1 ¹ / ₂	1 ¹ / ₁₆	1



T&B Recommended Tightening Torque

Size of Conductor Ranges	Wrench Torque in.-lb	Screwdriver Torque in.-lb
14 to 8	—	20
14 to 4	—	35
4 to 2/0	150	—
2 to 4/0	200	—
1 to 250	250	—
2/0 to 500	300	—

INSTALLATION DIES AND TOOLS