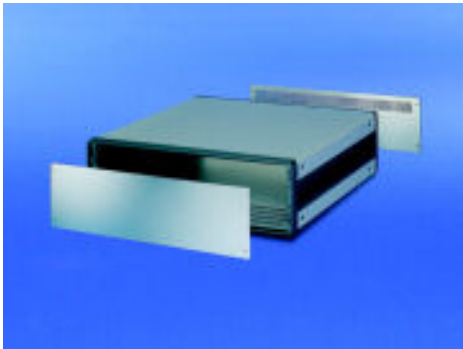
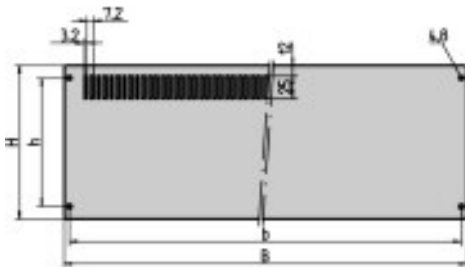


## Rear panel



Rear panel/front panel



Product illustrations are exemplary illustrations and can deviate from supplied products.

**Part no.:** 30823-518

### Features:

- The rear panel will be screwed with the rear frame of the case



### Technical information:

Description	Height	Width	Height H	Height h	B	b
Rear panel	4 U	84 HP	172,9 (mm)	144,5 mm	452,1 (mm)	439,7 mm

### Downloads:

CAD data in STEP 3D format ([Log in](#) Required)

To gain access to the additional information you must [Log in](#).  
If you do not yet have a user name, you may [Register here](#).

Add to basket



**Delivery comprises:** kit

Item	Qty	Description
1	1	Rear panel with perforation, Al, anodised, cut edges plain, 2,5 mm thick

**Note:**

- Assembly kit to fix one rear and one front panel is included with the case