



RAF ELECTRONIC  
HARDWARE

a Division of MW Industries, Inc.



[ABOUT US](#)   [WHAT'S NEW](#)   [CONTACT US](#)   [SERVICES](#)   [QUALITY](#)   [SITE MAP](#)

- [HOME](#)
- [PRODUCTS](#)
- [ONLINE CATALOG](#)
- [REQUEST QUOTE](#)
- [ORDER ONLINE](#)
- [CHECK STOCK](#)
- [REQUEST PRINT CATALOG](#)
- [REQUEST SAMPLES](#)
- [ENGINEERING DATA](#)
- [DISTRIBUTORS](#)
- [CAPABILITIES BROCHURE](#)

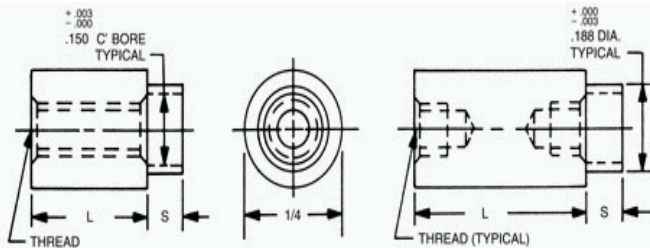
**CALL NOW:  
203 888-2133**



**NEFDA**  
New England Fastener  
Distributor Association



## 1/4 Round Swage Standoffs



Select	Part No.	Length
<input type="radio"/>	3045A	3/32
<input type="radio"/>	3045	1/8
<input type="radio"/>	3045T	5/32
<input type="radio"/>	3046	3/16
<input type="radio"/>	3046T	7/32
<input type="radio"/>	3047	1/4
<input type="radio"/>	3047T	9/32
<input type="radio"/>	3048	5/16
<input type="radio"/>	3048T	11/32
<input type="radio"/>	3049	3/8
<input type="radio"/>	3049T	13/32
<input type="radio"/>	3050	7/16
<input type="radio"/>	3050T	15/32
<input type="radio"/>	3051	1/2
<input type="radio"/>	3051T	17/32

Select	Part No.	Length
<input type="radio"/>	3052	9/16
<input type="radio"/>	3052T	19/32
<input type="radio"/>	3053	5/8
<input type="radio"/>	3053T	21/32
<input type="radio"/>	3054	11/16
<input type="radio"/>	3054T	23/32
<input type="radio"/>	3055	3/4
<input type="radio"/>	3055T	25/32
<input type="radio"/>	3056	13/16
<input type="radio"/>	3056T	27/32
<input type="radio"/>	3057	7/8
<input type="radio"/>	3057T	29/32
<input type="radio"/>	3058	15/16
<input type="radio"/>	3058T	31/32
<input type="radio"/>	3059	1"

Select	Part No.	Length
<input type="radio"/>	3060	1-1/16
<input type="radio"/>	3061	1-1/8
<input type="radio"/>	3062	1-3/16
<input type="radio"/>	3063	1-1/4
<input type="radio"/>	3064	1-5/16
<input type="radio"/>	3065	1-3/8
<input type="radio"/>	3066	1-7/16
<input type="radio"/>	3067	1-1/2
<input type="radio"/>	3068	1-9/16
<input type="radio"/>	3069	1-5/8
<input type="radio"/>	3070	1-11/16
<input type="radio"/>	3071	1-3/4
<input type="radio"/>	3072	1-13/16
<input type="radio"/>	3073	1-7/8
<input type="radio"/>	3074	1-15/16
<input type="radio"/>	3075	2"

Swage/Panel Code			
Select	S	+0.003 -0.003	P
<input type="radio"/>	A	.075	1/32
<input type="radio"/>	B	.105	1/16
<input type="radio"/>	C	.135	3/32
<input type="radio"/>	D	.165	1/8
<input type="radio"/>	E	.230	3/16
<input type="radio"/>	F	.290	1/4

Swage Tooling		
Punch	Anvil	Length
P-4	AR-22	3/32-3/16
	AR-23	7/32-7/16
	AR-24	15/32-11/16
	AR-25	23/32-2"

L = Standoff Length  
S = Shank Length  
P = Board Thickness

[Home](#)   [Previous](#)   [Next](#)   [Related Me](#)

Ordering Code				
xxxx	x	xxx	x	x
	Shank		Material	
Length		Thread		Fin

**PART: ???-?-??-?-?**

Red ?'s show missing selections. [H](#)

Select	Code	Thread
<input type="radio"/>	256	2-56
<input type="radio"/>	348	3-48
<input type="radio"/>	440	4-40
<input type="radio"/>	632	6-32

[Thread depth information](#)

Select	Code	Material	RoHS
<input type="radio"/>	AL	Aluminum	YES
<input type="radio"/>	B	Brass	YES
<input type="radio"/>	SS	Stainless Steel	YES
<input type="radio"/>	S	Steel	YES

[Material Specifications](#)

**SELECT FINISH:**

select a material first

\* Finishes ending with an asterisk are **not** RoHS Compliant

[Ordering non-standard items](#)

[HOME](#) | [PRODUCTS](#) | [ONLINE CATALOG](#) | [REQUEST QUOTE](#) | [ORDER ONLINE](#) | [CHECK STOCK](#) | [CONTACT US](#) | [SITE MAP](#)

© RAF Electronic Hardware, a Division of MW Industries | 95 Silvermine Rd., Seymour CT 06483 | Tel 203-888-2133 | Fax 203-888-9860