

## GENERAL PURPOSE CROCODILE CLIP.

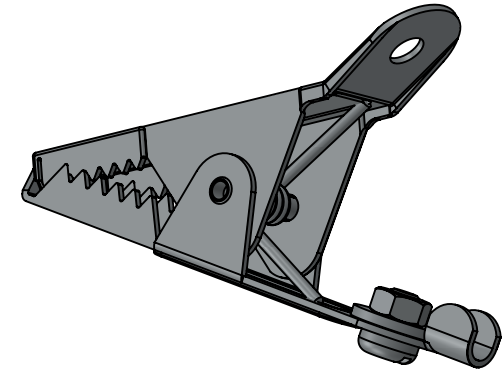
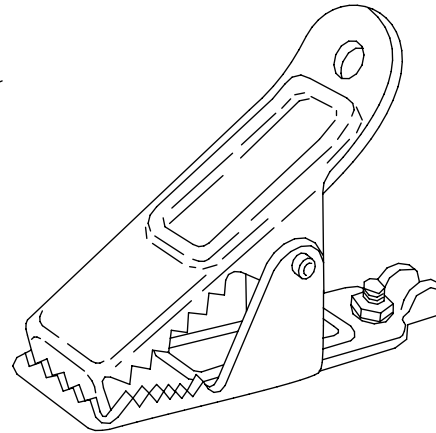
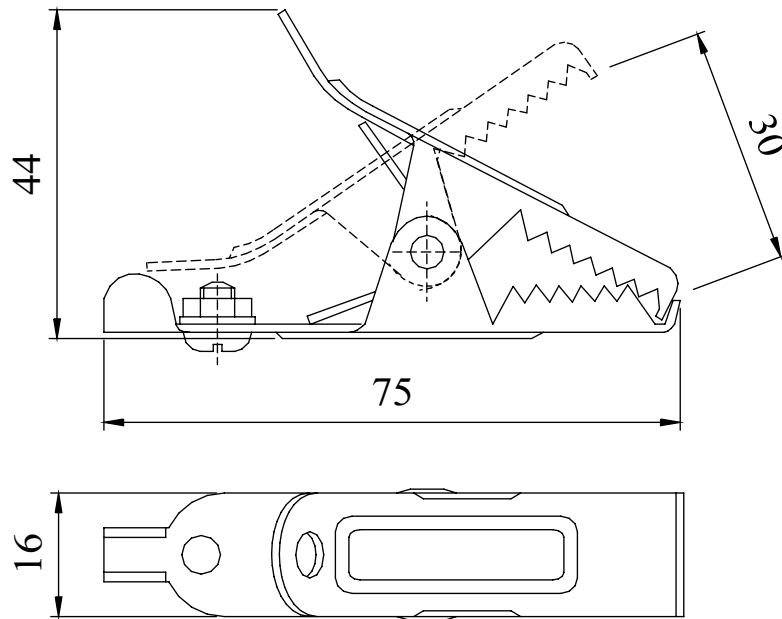
MANUFACTURED FROM BRIGHT MILD STEEL.  
 LARGE (30mm) JAW OPENING MAKES IT SUITABLE FOR USE  
 AS A BATTERY CLIP.  
 THE INTEGRAL CABLE CLAMP HAS A SECURE 4mm SCREW  
 FIXING.  
 THE ENHANCED FINGER GRIP ENSURES A SIMPLE OPERATION.

## MATERIAL

SCREW : M4 X 6mm, MILD STEEL  
 FINISH : NICKEL PLATED  
 NUT : M4, MILD STEEL  
 FINISH : NICKEL PLATED  
 WASHER : M4, MILD STEEL  
 FINISH : NICKEL PLATED

## PROPERTIES

CURRENT RATING : 25 AMPS  
 RATED VOLTAGE: : 50V  
 TEMPERATURE RATING : -20 TO + 200°C



PVC INSULATED BOOT AVAILABLE IN  
 RED 310-0500 OR BLACK 310-0100  
 OPERATING TEMPERATURE WITH BOOT FITTED -20 TO +60°C

### PROPRIETARY AND CONFIDENTIAL:

THE INFORMATION CONTAINED IN THIS DRAWING IS THE SOLE PROPERTY OF ALPHA 3 MANUFACTURING. ANY REPRODUCTION IN PART OR AS A WHOLE WITHOUT THE WRITTEN PERMISSION OF ALPHA 3 MANUFACTURING IS PROHIBITED.

DEM Manufacturing is a division of Alpha 3 Manufacturing LTD  
 DEM Manufacturing, Deltron Emcon House, Hargreaves Way,  
 Sawcliffe Ind. Park, Scunthorpe, North Lincolnshire, DN15 8RF, UK

UNLESS OTHERWISE SPECIFIED  
 DIMENSIONS ARE IN MILLIMETRES  
 LINEAR & RADIAL TOLERANCE:  
 NO DECIMAL PLACES  $\pm 0.5\text{mm}$   
 1 DECIMAL PLACE  $\pm 0.25\text{mm}$   
 2 DECIMAL PLACES  $\pm 0.125\text{mm}$   
 ANGULAR TOLERANCE:  $\pm 1^\circ$

### IF IN DOUBT ASK! DO NOT SCALE DRAWING!

FINISH SEE NOTE  
 MATERIAL SEE NOTE  
 THE FINISHED PRODUCT SHOULD BE CLEAN AND FREE FROM ALL LIQUIDS AND DEBRIS. SURFACES SHOULD BE OF UNIFORM APPEARANCE FREE FROM SHARP EDGES, BURRS AND CORROSION

|                        |              |            |                      |                         |
|------------------------|--------------|------------|----------------------|-------------------------|
| AUTHOR                 | SB           | TITLE      | LARGE CROCODILE CLIP |                         |
| EDITOR                 | DT           | FILE       | 304-0000             |                         |
| APPROVER               | PA           | PART       | 304-0000             |                         |
| THIRD ANGLE PROJECTION | SHEET 1 OF 1 | ISSUE/REV. | 006                  | EDIT DATE 14/09/2020    |
|                        | SCALE 1:1    | A4         | RELEASED             | RELEASE DATE 14/09/2020 |