

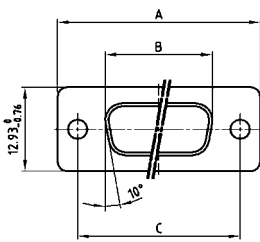
# COMBINATION D-SUB WITHOUT CONTACTS

For straight high power, coaxial or high voltage contacts



RoHS compliant – CSA listed, File No.: LR 115000-1 – UL listed, File No.: E 228329

## SOCKET CONNECTOR

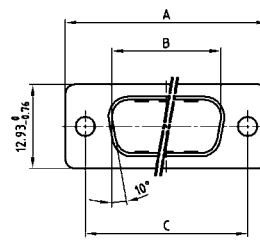


| Shellsize | A -0.76 | B -0.25 | C   |
|-----------|---------|---------|---|
| 1         | 31.19   | 16.46   | 25.00 <sup>+0.12</sup> / <sub>-0.13</sub> |
| 2         | 39.52   | 24.79   | 33.30 <sup>+0.15</sup> / <sub>-0.10</sub> |
| 3         | 53.42   | 38.50   | 47.04 <sup>+0.13</sup>                    |
| 4         | 69.70   | 54.96   | 63.50 <sup>+0.13</sup>                    |

## DESCRIPTION

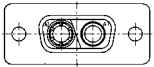
- Designs: 2W2C; 3W3; 3W3C; 5W5; 8W8
- Mounting styles:
  - with through-hole, Ø .118"/3 mm, with 4-40 UNC threaded insert, with 4-40 UNC threaded rear spacer,
  - with 4-40 UNC threaded rear spacer with PCB clip .291"/7.4 mm for PCB thickness .063"/1.6 mm, .091"/2.3 mm, .126"/3.2 mm
- On request: Threaded rear spacer with PCB clip .256"/6.5 mm available
- On request: M3 thread design available
- Shell: Steel tin plated (brass tin plated or stainless steel available on request)
- recommended plastic hoods look at page 7 | 16, 7 | 17

## PLUG CONNECTOR

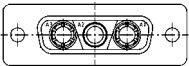


| Shellsize | A -0.76 | B +0.25 | C   | D -0.30 |
|-----------|---------|---------|---|---------|
| 1         | 31.19   | 16.79   | 25.00 <sup>+0.12</sup> / <sub>-0.13</sub> | 6.12    |
| 2         | 39.52   | 25.12   | 33.30 <sup>+0.15</sup> / <sub>-0.10</sub> | 6.12    |
| 3         | 53.42   | 38.84   | 47.04 <sup>+0.13</sup>                    | 5.99    |
| 4         | 69.70   | 55.30   | 63.50 <sup>+0.13</sup>                    | 5.99    |

## Coded socket connectors

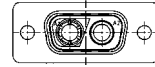


2W2C = 1 Socket – 1 Plug

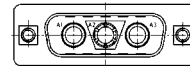


3W3C = 2 Sockets – 1 Plug

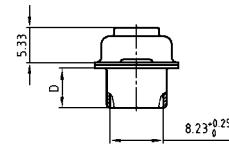
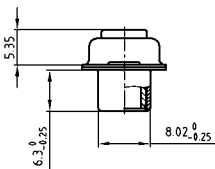
## Coded plug connectors



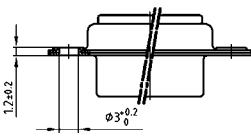
2W2C = 1 Plug – 1 Socket



3W3C = 2 Plugs – 1 Socket

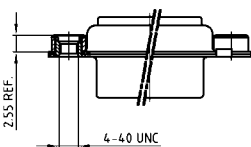


## ORDER DATA



| SOCKET CONNECTOR |                |                 |
|------------------|----------------|-----------------|
| Design           | Mounting style | Part Number     |
| 3W3              | Through-hole   | 3003W3SXX99A10X |
| 5W5              | Through-hole   | 3005W5SXX99A10X |
| 8W8              | Through-hole   | 3008W8SXX99A10X |
| Coded version    |                |                 |
| 2W2C             | Through-hole   | 302W2CSXX99A10X |
| 3W3C             | Through-hole   | 303W3CSXX99A10X |

| PLUG CONNECTOR |                |                 |
|----------------|----------------|-----------------|
| Design         | Mounting style | Part Number     |
| 3W3            | Through-hole   | 3003W3PXX99A10X |
| 5W5            | Through-hole   | 3005W5PXX99A10X |
| 8W8            | Through-hole   | 3008W8PXX99A10X |
| Coded version  |                |                 |
| 2W2C           | Through-hole   | 302W2CPXX99A10X |
| 3W3C           | Through-hole   | 303W3CPXX99A10X |



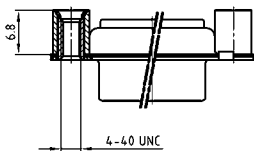
| SOCKET CONNECTOR |                         |                 |
|------------------|-------------------------|-----------------|
| Design           | Mounting style 4-40 UNC | Part Number     |
| 3W3              | Threaded insert         | 3003W3SXX99A30X |
| 5W5              | Threaded insert         | 3005W5SXX99A30X |
| 8W8              | Threaded insert         | 3008W8SXX99A30X |
| Coded version    |                         |                 |
| 2W2C             | Threaded insert         | 302W2CSXX99A30X |
| 3W3C             | Threaded insert         | 303W3CSXX99A30X |

| PLUG CONNECTOR |                         |                 |
|----------------|-------------------------|-----------------|
| Design         | Mounting style 4-40 UNC | Part Number     |
| 3W3            | Threaded insert         | 3003W3PXX99A30X |
| 5W5            | Threaded insert         | 3005W5PXX99A30X |
| 8W8            | Threaded insert         | 3008W8PXX99A30X |
| Coded version  |                         |                 |
| 2W2C           | Threaded insert         | 302W2CPXX99A30X |
| 3W3C           | Threaded insert         | 303W3CPXX99A30X |

# COMBINATION D-SUB – MOUNTING STYLES

For straight high power, coaxial or high voltage contacts

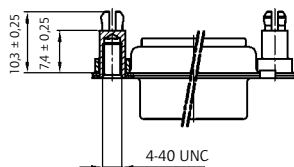
**ORDER DATA**



| SOCKET CONNECTOR |                         |                 |
|------------------|-------------------------|-----------------|
| Design           | Mounting style 4-40 UNC | Part Number     |
| 3W3              | Threaded rear spacer    | 3003W3SXX99A50X |
| 5W5              | Threaded rear spacer    | 3005W5SXX99A50X |
| 8W8              | Threaded rear spacer    | 3008W8SXX99A50X |
| Coded version    |                         |                 |
| 2W2C             | Threaded rear spacer    | 302W2CSXX99A50X |
| 3W3C             | Threaded rear spacer    | 303W3CSXX99A50X |

| PLUG CONNECTOR |                         |                 |
|----------------|-------------------------|-----------------|
| Design         | Mounting style 4-40 UNC | Part Number     |
| 3W3            | Threaded rear spacer    | 3003W3PXX99A50X |
| 5W5            | Threaded rear spacer    | 3005W5PXX99A50X |
| 8W8            | Threaded rear spacer    | 3008W8PXX99A50X |
| Coded version  |                         |                 |
| 2W2C           | Threaded rear spacer    | 302W2CPXX99A50X |
| 3W3C           | Threaded rear spacer    | 303W3CPXX99A50X |

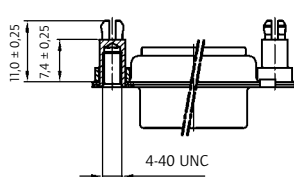
PCB thickness .063"/1.6 mm



| SOCKET CONNECTOR |                               |                 |
|------------------|-------------------------------|-----------------|
| Design           | Mounting style 4-40 UNC       | Part Number     |
| 3W3              | Threaded rear spacer PCB clip | 3003W3SXX99E20X |
| 5W5              | Threaded rear spacer PCB clip | 3005W5SXX99E20X |
| 8W8              | Threaded rear spacer PCB clip | 3008W8SXX99E20X |
| Coded version    |                               |                 |
| 2W2C             | Threaded rear spacer PCB clip | 302W2CSXX99E20X |
| 3W3C             | Threaded rear spacer PCB clip | 303W3CSXX99E20X |

| PLUG CONNECTOR |                               |                 |
|----------------|-------------------------------|-----------------|
| Design         | Mounting style 4-40 UNC       | Part Number     |
| 3W3            | Threaded rear spacer PCB clip | 3003W3PXX99E20X |
| 5W5            | Threaded rear spacer PCB clip | 3005W5PXX99E20X |
| 8W8            | Threaded rear spacer PCB clip | 3008W8PXX99E20X |
| Coded version  |                               |                 |
| 2W2C           | Threaded rear spacer PCB clip | 302W2CPXX99E20X |
| 3W3C           | Threaded rear spacer PCB clip | 303W3CPXX99E20X |

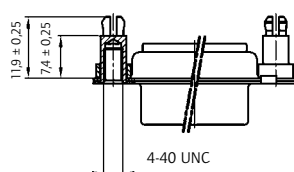
PCB thickness .091"/2.3 mm



| SOCKET CONNECTOR |                               |                 |
|------------------|-------------------------------|-----------------|
| Design           | Mounting style 4-40 UNC       | Part Number     |
| 3W3              | Threaded rear spacer PCB clip | 3003W3SXX99E40X |
| 5W5              | Threaded rear spacer PCB clip | 3005W5SXX99E40X |
| 8W8              | Threaded rear spacer PCB clip | 3008W8SXX99E40X |
| Coded version    |                               |                 |
| 2W2C             | Threaded rear spacer PCB clip | 302W2CSXX99E40X |
| 3W3C             | Threaded rear spacer PCB clip | 303W3CSXX99E40X |

| PLUG CONNECTOR |                               |                 |
|----------------|-------------------------------|-----------------|
| Design         | Mounting style 4-40 UNC       | Part Number     |
| 3W3            | Threaded rear spacer PCB clip | 3003W3PXX99E40X |
| 5W5            | Threaded rear spacer PCB clip | 3005W5PXX99E40X |
| 8W8            | Threaded rear spacer PCB clip | 3008W8PXX99E40X |
| Coded version  |                               |                 |
| 2W2C           | Threaded rear spacer PCB clip | 302W2CPXX99E40X |
| 3W3C           | Threaded rear spacer PCB clip | 303W3CPXX99E40X |

PCB thickness .126"/3.2 mm



| SOCKET CONNECTOR |                               |                 |
|------------------|-------------------------------|-----------------|
| Design           | Mounting style 4-40 UNC       | Part Number     |
| 3W3              | Threaded rear spacer PCB clip | 3003W3SXX99E60X |
| 5W5              | Threaded rear spacer PCB clip | 3005W5SXX99E60X |
| 8W8              | Threaded rear spacer PCB clip | 3008W8SXX99E60X |
| Coded version    |                               |                 |
| 2W2C             | Threaded rear spacer PCB clip | 302W2CSXX99E60X |
| 3W3C             | Threaded rear spacer PCB clip | 303W3CSXX99E60X |

| PLUG CONNECTOR |                               |                 |
|----------------|-------------------------------|-----------------|
| Design         | Mounting style 4-40 UNC       | Part Number     |
| 3W3            | Threaded rear spacer PCB clip | 3003W3PXX99E60X |
| 5W5            | Threaded rear spacer PCB clip | 3005W5PXX99E60X |
| 8W8            | Threaded rear spacer PCB clip | 3008W8PXX99E60X |
| Coded version  |                               |                 |
| 2W2C           | Threaded rear spacer PCB clip | 302W2CPXX99E60X |
| 3W3C           | Threaded rear spacer PCB clip | 303W3CPXX99E60X |

PCB clip .122" / 3.1 ± .004" / 0.10 mm hole diameter