

SWITCHES Printed Circuit Tacticle

SPECIFICATIONS:

Current Rating:	50mA @ 125VDC
Initial Contact Resistance:	100 Meg ohm (Max.)
Insulation Resistance:	100 Meg ohm (Min.) @ 500 VDC
Dielectric Strength:	250V AC/ 1 minute
Contact Material:	Phosphor Bronze w/Silver Cladding
Terminal Material:	Brass with Silver Cladding

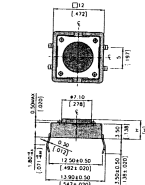
Part No.	Housing	Type	Action	Terminal
30-14411	6 x 6mm - 4.5mm H.	SPST	OFF - (ON)	Through Hole Mt.
30-14412	6 x 6mm - 7.0mm H.	SPST	OFF - (ON)	Surface Mt.
30-14414	6 x 6mm - 7.0mm H.	SPST	OFF - (ON)	Through Hole Mt.
30-14415	6 x 6mm - 9.5mm H.	SPST	OFF - (ON)	Surface Mt.
30-14416	12 x 12mm - 4.3mm H.	SPST	OFF - (ON)	Surface Mt.
30-14418	6 x 6mm - 11.8mm H.	SPST	OFF - (ON)	Through Hole Mt.

No. 30-14410 Designer Kit

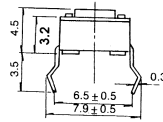
Kit contains No. 30-14411, No. 30-14412, No. 30-14414, No. 30-14415, and No. 30-14418

NOTE: () = Momentary

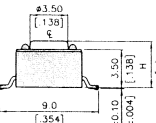
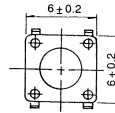
*30-14418 is Right Angle



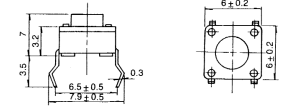
No. 30-14416



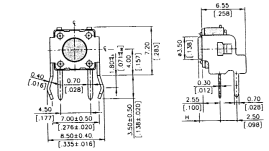
No. 30-14411



No. 30-14412
No. 30-14415



No. 30-14414



No. 30-14418



No. 30-14411



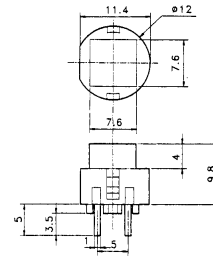
No. 30-14418

SPECIFICATIONS:

Current Rating:	10mA @ 35V DC
Stroke:	0.8mm
Operating Force:	130 ± 30 gf.
Terminal Type:	PCB Mount

Part No.	Type	Action	Actuator
30-14420	SPST	OFF - (ON)	Square Black

NOTE: () = Momentary



PUSH BUTTON KEY SWITCH

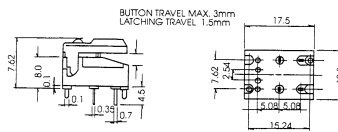


SPECIFICATIONS:

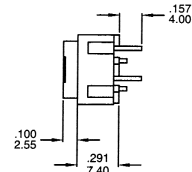
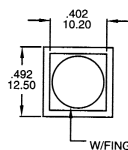
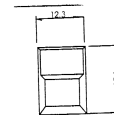
Current Rating:	50mA @ 24V AC
Initial Contact Resistance:	20 Meg ohm Max (AC 12UV/5mA)
Insulation Resistance:	100 Meg ohms. (Min.)
Dielectric Strength:	250V/AC (Min.)
Electrical Life:	200,000 Operations
Shock Resistance:	30G
Terminal Type:	PCB Mount

Part No.	Type	Action	Actuator
30-14419	SPST	OFF - (ON)	White Plastic

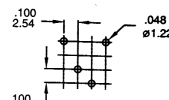
NOTE: () = Momentary



PUSH BUTTON KEYBOARD SWITCH



P.C. MOUNTING



Part No.	Actuator Color
30-14424	RED
30-14425	WHITE
30-14426	BLACK

* Display pack of 2

SPST Momentary Printed Circuit Push Button Switch

Attractive, low profile SPST push-button switches. A dull click provides tactile feedback when contact has been made.

Electrical Rating:

RATING: 25MA @50VDC

Electrical Life: 1million cycles typical.

Insulation resistance: minimum of 1,000 megohms.

Contact Resistance: 10m max @ 2-4VDC, 100mA.

Dielectric strength: >1,000V rms @ sea level.

Operating force:120+/-50 gf

Housing: 6/6 Nylon.

Cap: ABS or polycarbonate.

Dome contact: gold over stainless.

Terminals and contacts: Silver plated over copper alloy.

