

## MAGNETIC REED SWITCH

**SPECIFICATIONS:**

<b>Current Rating:</b>	.5A @ 100VDC		
<b>Initial Contact Resistance:</b>	300 Meg ohm (Max.)		
<b>Operating Gap:</b>	1.25" Max		
<b>Mounting Centers:</b>	2.094" (2-3/32")		
<b>Mounting Hole:</b>	.15" (Max.)		
<b>Terminal Type:</b>	Screw		
Part No.	Type	Action	Actuator
30-17050	SPST	N.C (Normally closed) when magnet is within actuation range	Magnet



**SPECIFICATIONS:**

<b>Current Rating:</b>	0.5A @ 20V DC, 10 Watts (Max.)		
<b>Voltage Rating:</b>	120V AC (Max.) @ 0.08A 80V DC (Max.) @ 0.1A		
<b>Contact Material:</b>	Iron Alloy - Gold Plate		
<b>Terminal Material:</b>	Plated Steel		
<b>Terminal Type:</b>	Screw		
Part No.	Type	Action	Actuator
30-10072	SPDT	Normally open w/o magnet Normally closed w/o magnet	Magnet

## N.O./N.C. MAGNETIC REED SWITCH

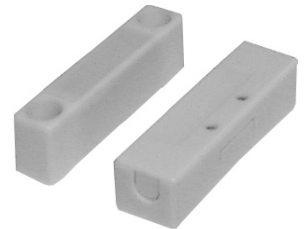


Mounting Center: 2.125"

**SPECIFICATIONS:**

<b>Current Rating:</b>	.5A @ 100VDC/125VAC		
<b>Initial Contact Resistance:</b>	300 Meg ohm (Max.)		
<b>Operating Gap:</b>	.90" Max		
<b>Mounting Centers:</b>	1.56" (1-9/16")		
<b>Mounting Hole:</b>	.134" (Max.)		
<b>Terminal Type:</b>	Screw		
Part No.	Type	Action	Actuator
30-17051	SPST	N.O. (Normally Open) when magnet is within actuation range	Magnet

## MAGNETIC REED SWITCH



**SPECIFICATIONS:**

<b>Current Rating:</b>	.5A @ 100VDC/125VAC		
<b>Initial Contact Resistance:</b>	300 Meg ohm (Max.)		
<b>Operating Gap:</b>	.60"-1.5"		
<b>Mounting Centers:</b>	1"		
<b>Mounting Hole:</b>	.125" (Max.)		
<b>Terminal Type:</b>	10" Leads, 24 AWG		
Part No.	Type	Action	Actuator
30-17054	SPST	N.O. (Normally Open) when magnet is within actuation range	Magnet

## LOW PROFILE MAGNETIC REED SWITCH

