

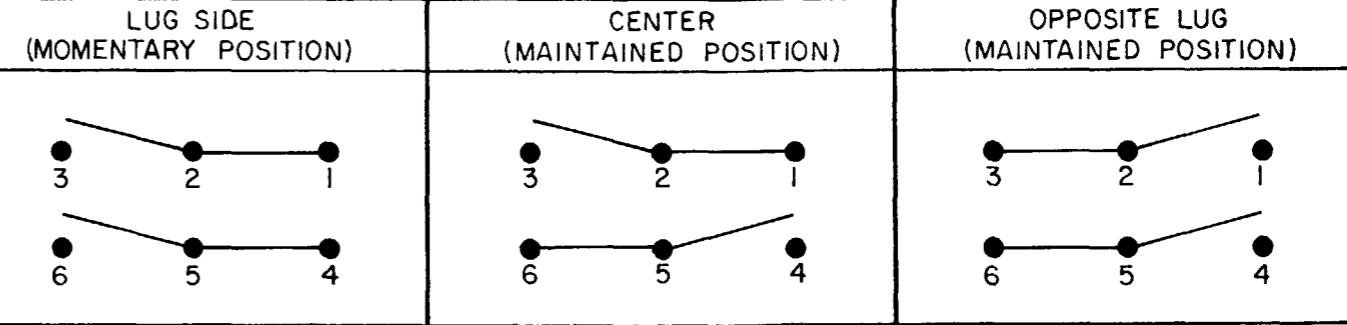
MICRO SWITCH
 FREEPORT ILLINOIS U S A
 A DIVISION OF HONEYWELL
 FED. MFG. CODE 91929

**SWITCH - TOGGLE
 FLUSH KEY**

CATALOG LISTING
2TP201-50

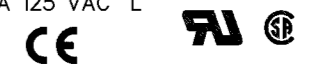
THIS DRAWING COVERS A PROPRIETARY ITEM AND IS THE PROPERTY OF MICRO SWITCH, A DIVISION OF HONEYWELL. THIS DRAWING IS NOT TO BE COPIED OR USED WITHOUT THE APPROVAL OF MICRO SWITCH.

CIRCUIT DIAGRAM

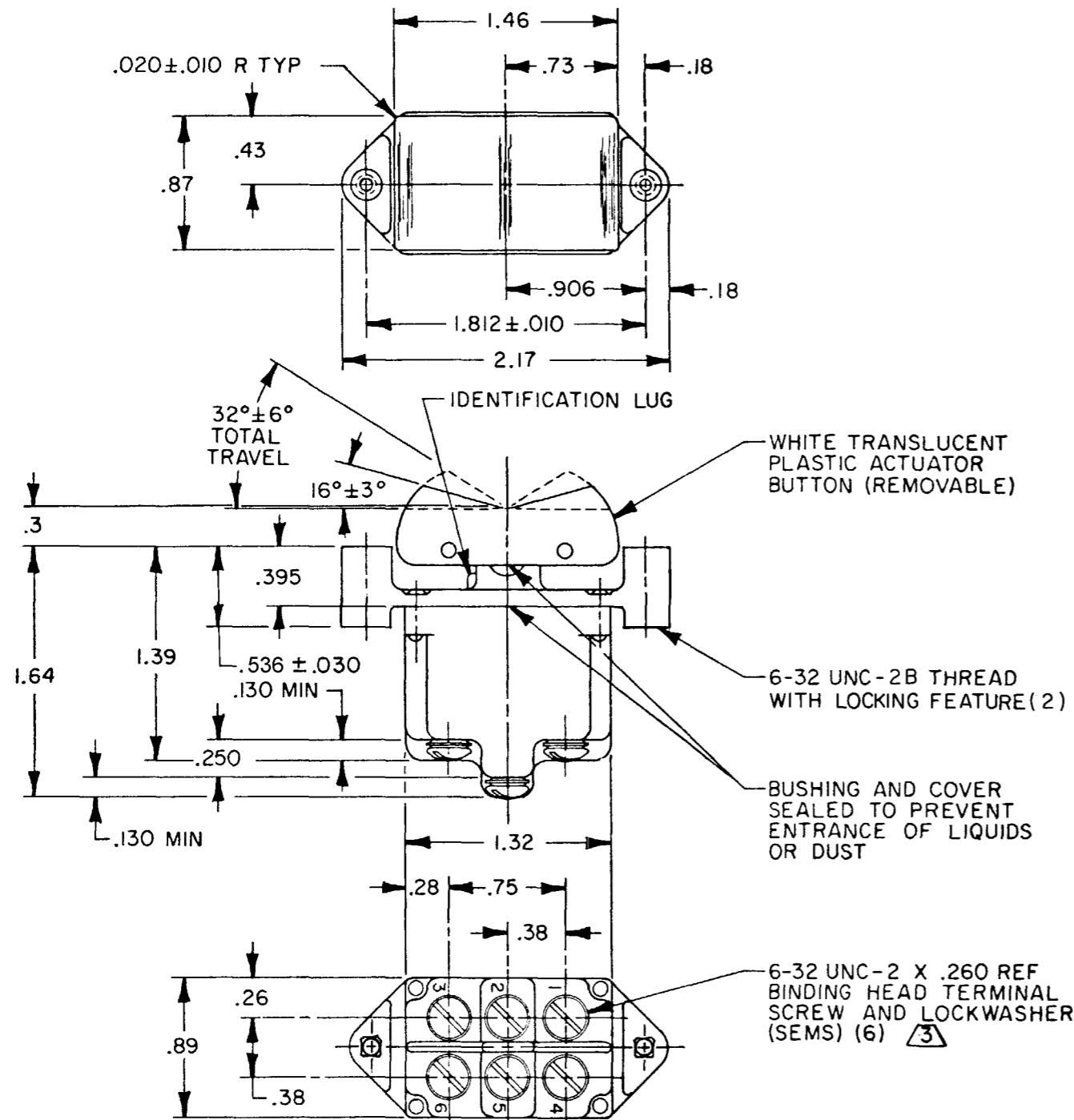


ELECTRICAL DATA

L192 10A 125, 250, 277 VAC
 1/4HP 125 VAC,
 1/2HP 250, 277 VAC
 3A 125 VAC "L"



DRAWING NUMBER: 2TP201-50
 PAGE 1 OF 1
 ISSUE: 6
 REVISIONS:
 A C056164 J A P MAR 85
 B C057496 C J H SEP 85
 C C058717-B W J K OCT 86
 D CO-94413 W J K NOV 86
 E 202714 C S L APR 01
 RASTER: FO-92854-C
 DRAWN: JEF
 CHECK: CEB
 DATE: 23 OCT 81
 RELEASE NO. PR-10585
 REPLACES:



THIRD ANGLE PROJECTION

SCALE FULL

DO NOT SCALE PRINT

TOLERANCES
 APPLY TO DESIGN UNITS. CONVERSIONS ARE ONLY FOR REFERENCE. UNLESS NOTED, TOLERANCES ARE ±

DIM.	TOL.	DIM.	TOL.
mm	mm/in	in	mm/in
NO PLACES	X	1/04	X X
ONE PLACE	X X	0.4/0.16	X X X
TWO PLACES	X X X	0.38/0.15	X X X X
THREE PLACES	X X X X	0.13/0.005	X X X X X

DESIGN UNITS: SI METRIC US CUSTOMARY

WEIGHT

- NOTES**
- CIRCUIT DESIGNATION AND MICRO SWITCH CAT. LIST. STAMPED ON SIDE OF SWITCH
 - THESE SWITCHES WILL WITHSTAND TEMPERATURE OF 160°F
 - SCREWS FURNISHED UNASSEMBLED