

# MICRO SWITCH

FREEPORT, ILLINOIS, U.S.A.  
A DIVISION OF HONEYWELL  
FED. MFG. CODE 91929

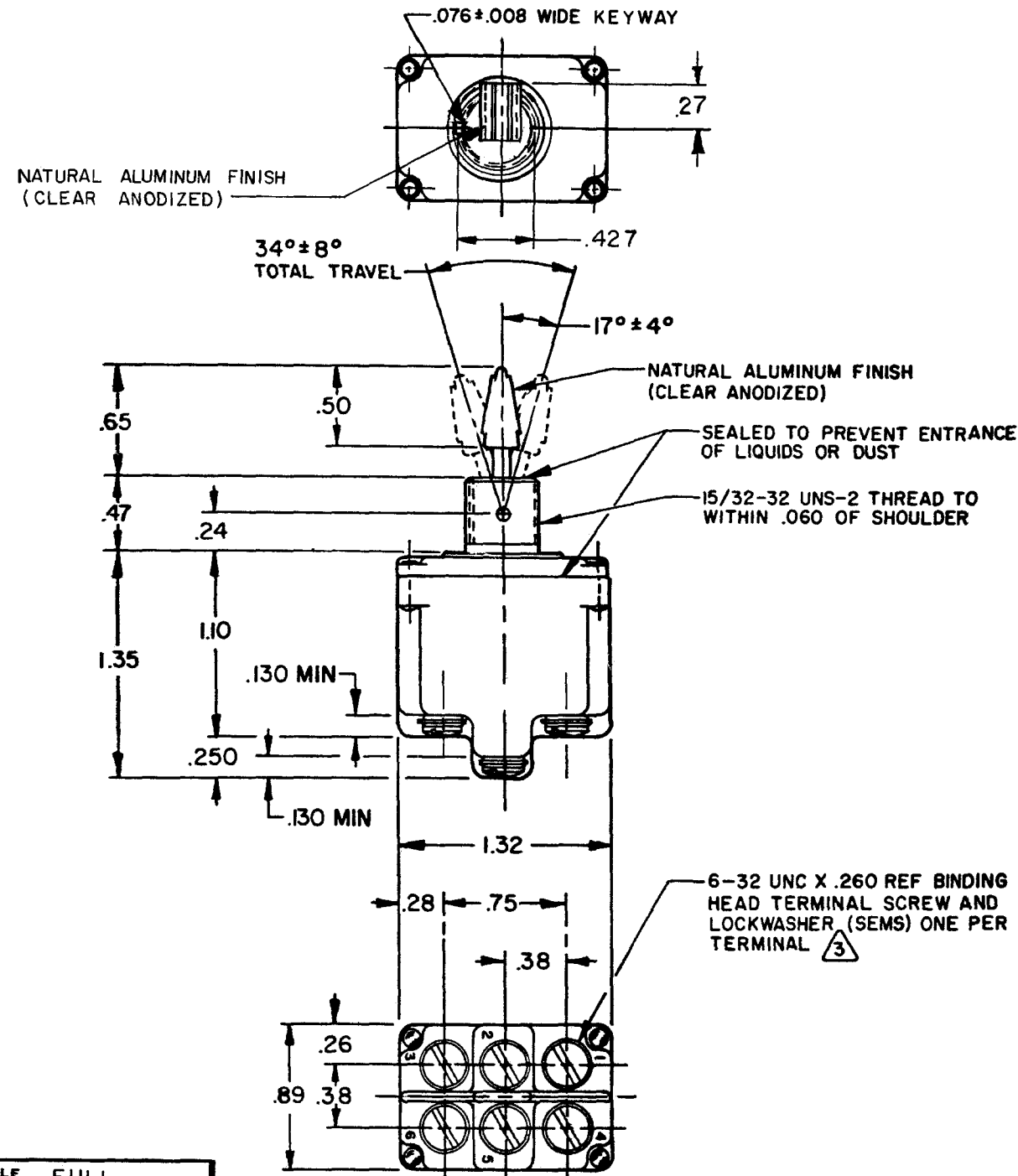
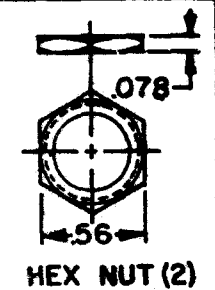
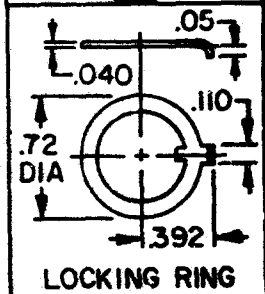
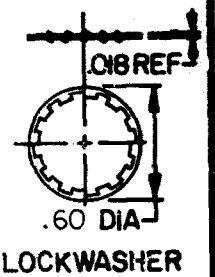
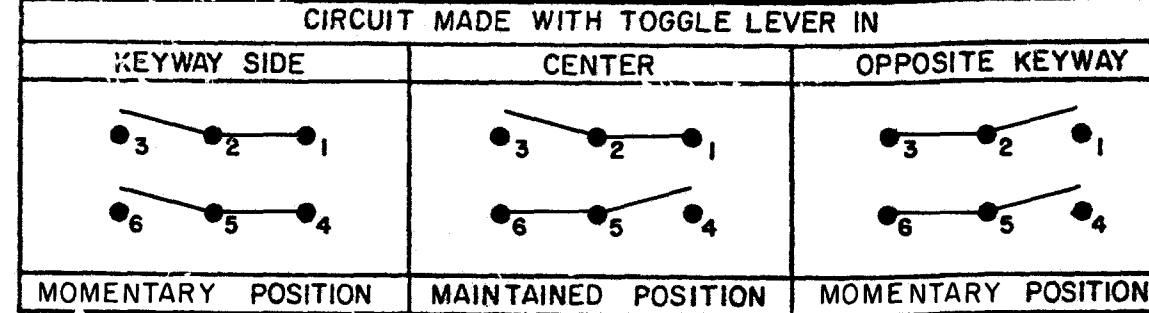
# SWITCH-TOGGLE

CATALOG LISTING  
**2TL163-70**

### MILITARY RATING (AMPS)

RESISTIVE LOAD		LAMP LOAD		INDUCTIVE LOAD	
DC VOLTS	AC VOLTS	28 VDC	125 VAC	28 VDC	125 VAC
18	.75	.5	11	6	5
					2
					10
					8

THIS DRAWING COVERS A PROPRIETARY ITEM AND IS THE PROPERTY OF MICRO SWITCH, A DIVISION OF HONEYWELL. THIS DRAWING IS NOT TO BE COPIED OR USED WITHOUT THE APPROVAL OF MICRO SWITCH.



### NOTES

- SWITCHES ARE CAPABLE OF WITHSTANDING A TEMPERATURE OF 160°F CONTINUOUSLY AT FULL RATED LOAD
- CIRCUIT DESIGNATION AND MICRO SWITCH CATALOG LISTING MARKED ON SIDE OF SWITCH
- FURNISHED UNASSEMBLED
- FOR TERMINAL COVER SEE MICRO SWITCH CATALOG LISTING 5PA8

CATALOG LISTING  
**2TL163-70**  
 PAGE 1 OF 1  
 RELEASE NO. PR-8413  
 REPLACES  
**M**  
 DRAWING NUMBER  
**1616**  
 ISSUE  
 REVISIONS  
 A CO-81150 JAK 19 JUN 95  
 B CO94437 GJW 29 NOV 99  
 CHECK DFK 15 APR 78  
 CHECK CEB 19 APR 78  
 CHECK TMM 31 MAR 78  
 DRAWN FORMTEK

SCALE FULL  
DO NOT SCALE PRINT  
UNLESS OTHERWISE NOTED  
DIMENSIONS ARE IN INCHES  
TOLERANCES ARE:  
ONE PLACE (.0) ±.030  
TWO PLACE (.00) ±.015  
THREE PLACE (.000) ±.005  
ANGLES  
WEIGHT .12 LB APPROX

10A-125, 250, 277 VAC  
1/4HP-125VAC; 1/2HP-250, 277VAC  
3A-125VAC "L" CODE L192