

MICRO SWITCH

A DIVISION OF MINNEAPOLIS-HONEYWELL REGULATOR COMPANY
FREEPORT, ILLINOIS

FED. MFR. CODE 91929

SWITCH - BASIC

CATALOG LISTING
2SXI-T

CATALOG LISTING
2SXI-T
PAGE 1 OF 1

M

DRAWING NUMBER

6

ISSUE

REPLACES

SR 8881

RELEASE NO.

CHECK

60

31 MAR 60

RPH

CHECK

60

31 MAR 60

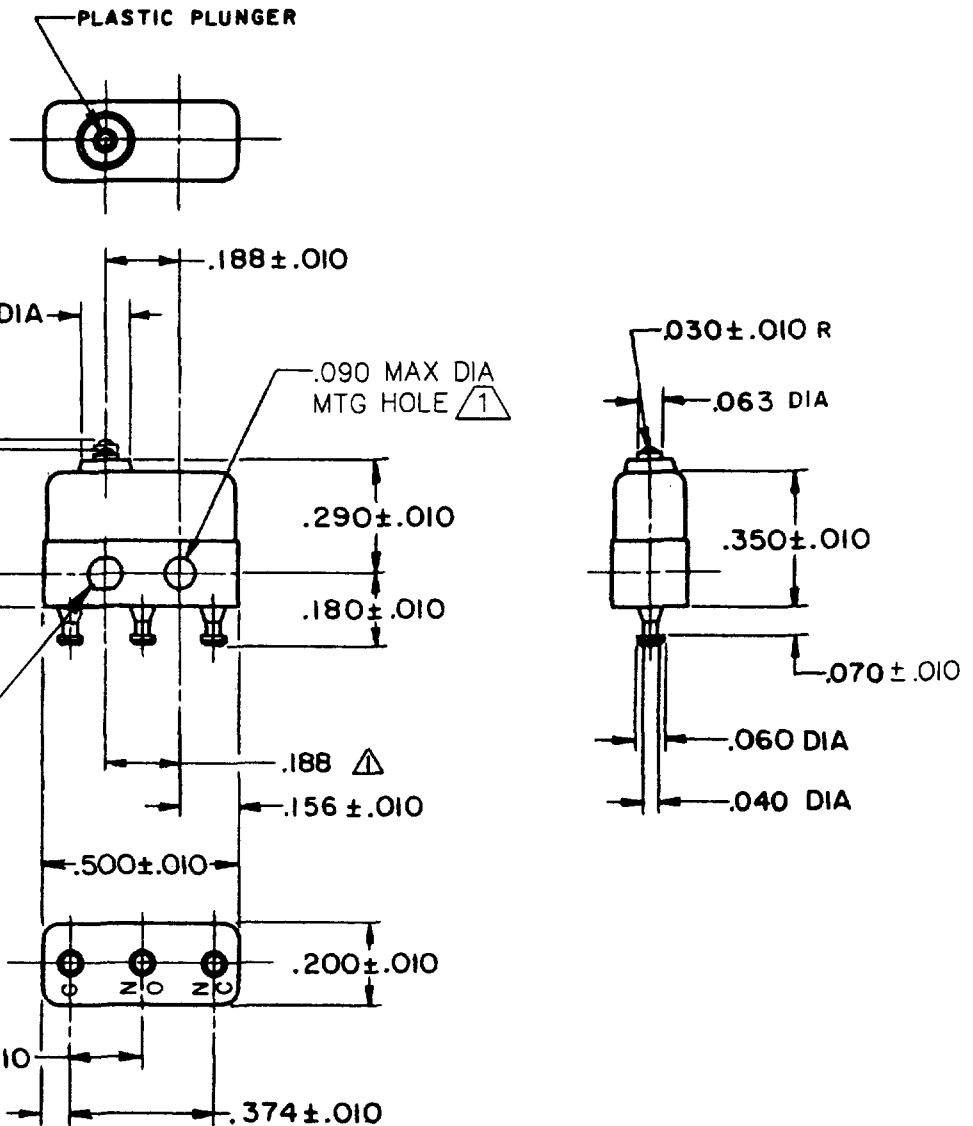
CHECK

60

31 MAR 60

CHECK

60



NOTES

$\Delta 1$ MOUNTING HOLES WILL ACCEPT PINS OR SCREWS OF .087 MAX DIA ON .188 ± .002 CENTERS

2-TERMINALS ARE PLATED FOR SOLDERING

3-SWITCH WILL WITHSTAND TEMPERATURE OF 250° F

THIS DRAWING COVERS A PROPRIETARY ITEM AND IS THE PROPERTY OF MICRO SWITCH, A DIVISION OF MINNEAPOLIS-HONEYWELL REGULATOR CO. THIS DRAWING IS NOT TO BE COPIED OR USED WITHOUT THE APPROVAL OF MICRO SWITCH.

CHARACTERISTICS		ELECTRICAL DATA		SCALE 2 TO 1
OPERATING FORCE	----- 3 OZ MAX	CONTACT ARRANGEMENT		DO NOT SCALE PRINT
RELEASE FORCE	----- 1 OZ MIN	S P D T		UNLESS OTHERWISE SPECIFIED
DIFFERENTIAL TRAVEL	----- .005 MAX	28 VOLTS DC RATING		DIMENSIONS ARE IN INCHES
OVERTRAVEL	----- .004 MIN	INDUCTIVE ----- SEA LEVEL ----- 4 AMP		TOLERANCES ARE:
		50,000 FT ----- 2.5 AMP		ONE PLACE (.0) ± .030
		RESISTIVE ----- SEA LEVEL ----- 7 AMP		TWO PLACE (.00) ± .015
		50,000 FT ----- 7 AMP		THREE PLACE (.000) ± .005
		MAXIMUM INRUSH ----- 24 AMP		ANGLES ±
APPROVALS	DEMKO, CE	7A 250V-T125 5E4		WEIGHT .003 LB MAX
	UL, CSA	7A 250 VAC		
			BRAND L7	

RASTER

FC-5037D

DRAWN

1 Y 0 31 MAR 60