

MICRO SWITCH

FREEPORT ILLINOIS, U.S.A
A DIVISION OF HONEYWELL INC.
FED. MFG. CODE 91929

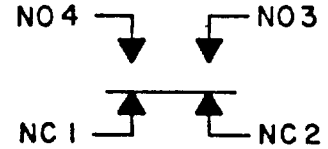
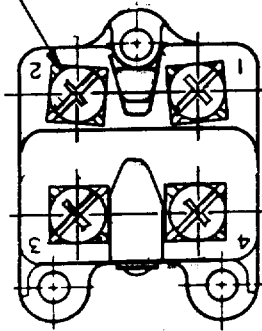
SWITCH - BASIC

CATALOG LISTING

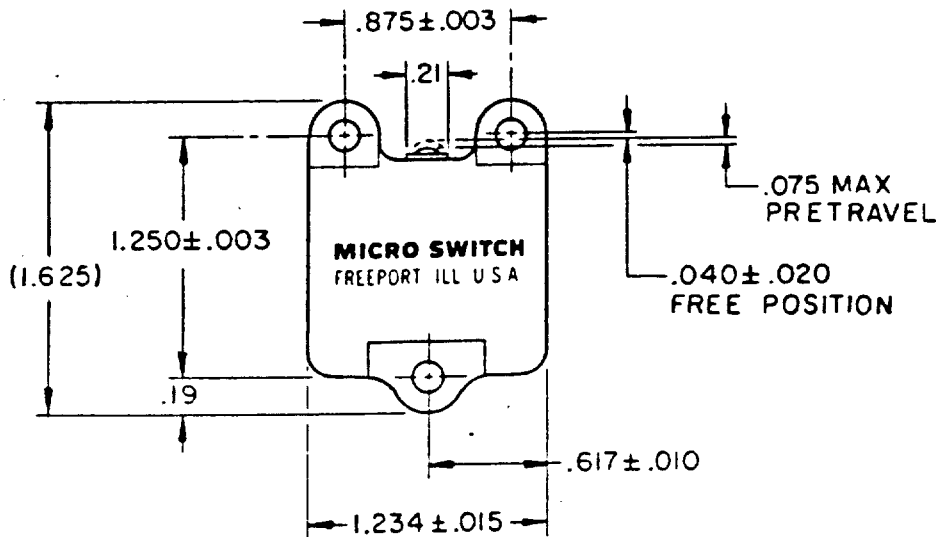
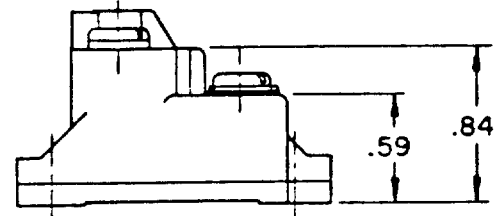
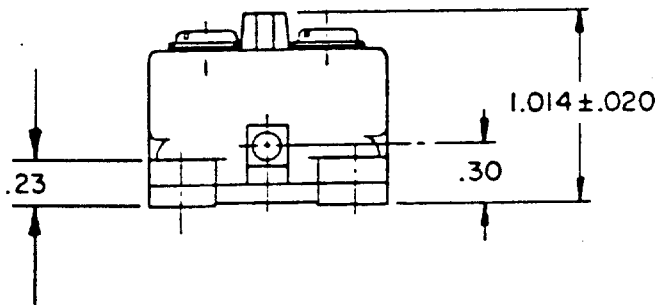
2MN8

5

4X 8-32 UNC PAN HEAD SCREW AND
CLAMPING PRESSURE PLATE



CIRCUIT DIAGRAM

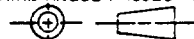


NOTE

1 - MOUNTING HOLES WILL ACCEPT NO. 4 SCREWS ON $.875 \pm .003$ AND $1.250 \pm .003$ CENTERS

THIS DRAWING COVERS A PROPRIETARY ITEM AND IS THE PROPERTY OF MICRO SWITCH, A DIVISION OF HONEYWELL. THIS DRAWING IS NOT TO BE COPIED OR USED WITHOUT THE APPROVAL OF MICRO SWITCH.

THIRD ANGLE PROJECTION



CHARACTERISTICS	ELECTRICAL DATA	SCALE FULL	DO NOT SCALE PRINT
OPERATING FORCE----- 11 OZ MAX	CONTACT ARRANGEMENT SEE CIRCUIT DIAGRAM		
RELEASE FORCE----- 3 OZ MIN			
DIFFERENTIAL TRAVEL --- .005-.009	10A 125, <u>250</u> OR 480 VAC 1/2 HP 125 VAC, 1 HP <u>250</u> VAC		
OVERTRAVEL ----- .017 MIN	PILOT DUTY : 600 VAC MAX		
RELEASE TRAVEL ----- .022 MIN			
			UNLESS OTHERWISE SPECIFIED TOLERANCES ARE
			ONE PLACE (.0) ± .030
			TWO PLACE (.00) ± .015
			THREE PLACE (.000) ± .005
			ANGLES ±
			WEIGHT

DRAWING NUMBER: 2MN8
 M
 1314
 ISSUED
 CHECK
 REVISIONS:
 A CO 65814-D SAV 27 JUN 90
 B CO 77031 JDB 22 DEC 93
 CHECK
 SAV 27 JUN 90
 DRAWN
 FO-52848-B