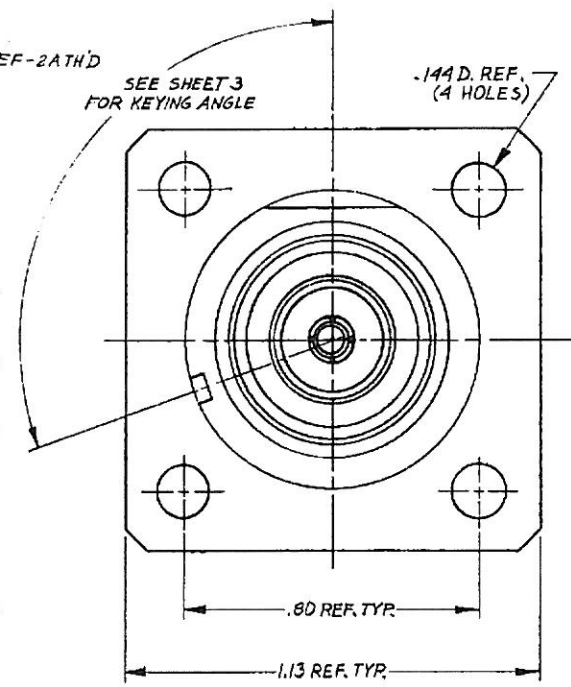
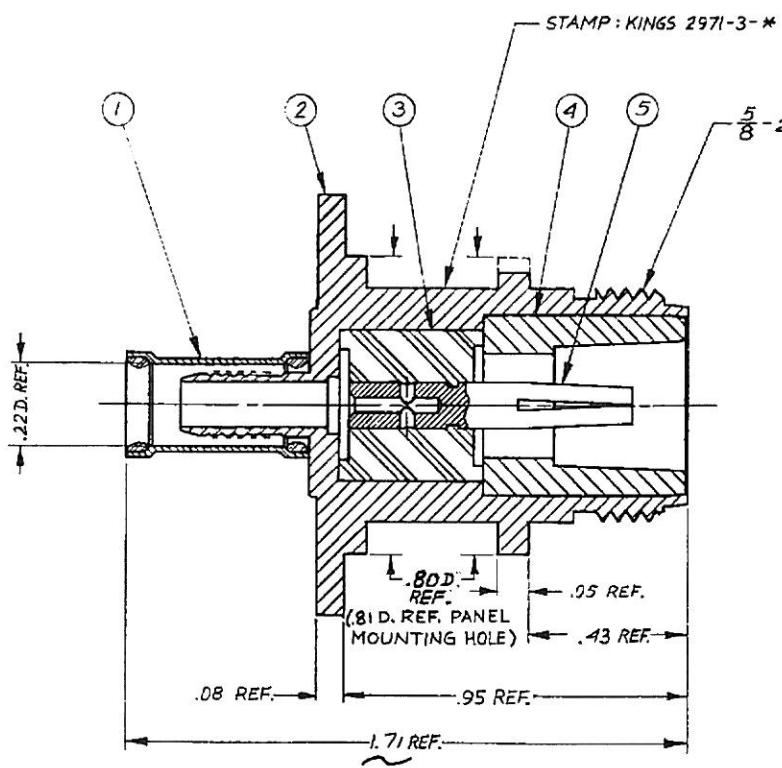


DASH NO	M CODE	MADE FROM
---------	--------	-----------

S-D

REVISIONS	
ISSUE	CHANGES
0	ER 30902 KH 8JUN89
1	CN 31122 A JCA 13SEP89

2971-3-*
(SHEET 1 OF 3)



NOTES:

1. FOR USE WITH RG-142 B, 223/U & TYPES AA6343 CABLES.
2. FOR CRIMPING USE DIE SIZE 101.
3. FOR CABLING INSTRUCTIONS SEE CP-5406.
4. FOR CABLE TRIMMING USE KTI-160 & KTD-208.
5. ITEM ⑤ TO BE SUPPLIED UNASSEMBLED.
6. ITEMS ①, ② & ④ TO HAVE KINGS TARNISH RESISTANT FINISH (TR-5).
7. FOR USE WITH .075 MAX. PANEL.
8. INTERFACE PER MIL-STD-348 F:G. 304-2.


9. MARK PACKAGE:
KINGS 2971-3-*
XXXX (DATE CODE)

SEE SHEET 3

S-D

UNLESS OTHERWISE SPECIFIED:	2 REMOVE ALL BURRS, BREAK SHARP EDGES .005 MAX
1 TOLERANCES FRACTIONS & 2 PLACE DECIMALS ± 0.10	3 NO FILLETS PERMITTED.
3 PLACE DECIMALS ± .004	4 SURFACE ROUGHNESS 63 MICROINCHES RMS MAX.
1 R CONCENTRICITY OF ANY 2 DIAMETERS MAY NOT EXCEED HALF THE SUM OF THEIR TOLERANCES	5 ALL DIMENSIONS PRIOR TO PLATING.
	6 ALL PLATING IN ACCORDANCE WITH KER 10004.

SCALE	3:1
APPROX SURFACE AREA	
WAS:	E-15738 A-Y
USED ON	
REF	BOEING
N PANEL JACK KEYED	
DRAWN	M.Z.B. DATE 8 MAY 89
APPR	LT DATE 15 MAY 89
APPR	DATE
 ELECTRONIC CO. INC. 125 HANCOCK ST. NEWTON, MASS. 02459	
2971-3-* (SHEET 1 OF 3)	

ITEM		REQ'D	DESCRIPTION	PART NO.	2971-3-* (SHEET 2 OF 3)									
1	1		HPK-GRIP SLEEVE	C-59-218-2-M06	REVISIONS <table border="1" style="width:100%; border-collapse: collapse;"> <thead> <tr> <th style="width:10%;">ISSUE</th> <th colspan="2">CHANGES</th> </tr> </thead> <tbody> <tr> <td>0</td> <td>ER</td> <td>30902 KH 8JUN89</td> </tr> <tr> <td>1</td> <td>CN</td> <td>31122 A JCA 13SEP89</td> </tr> </tbody> </table>	ISSUE	CHANGES		0	ER	30902 KH 8JUN89	1	CN	31122 A JCA 13SEP89
ISSUE	CHANGES													
0	ER	30902 KH 8JUN89												
1	CN	31122 A JCA 13SEP89												
2	1		N PANEL BODY F KEYED											
3	1		INSULATOR											
4	1		BUSHING											
5	1		N CRIMP CAPTIVE CONTACT F	1-534-92MA9										
6	1		PROTECTIVE CAP	4-148-7M99										
					<p style="font-size: 2em; margin: 0;">S-D</p>									
USED ON														
REF														
FINISH SPEC KER 10004														
PARTS LIST														
DRAWN		M.Z.B.	DATE		9 MAY 89									
APPR		LT	DATE		15 MAY 89									
 KINGS ELECTRONICS CO. INC. PLAINFIELD, NEW JERSEY 07054														
2971-3-* (SHEET 2 OF 3)														

DASH NO. M-CODE MADE FROM

2971-3-*
(SHEET 3 OF 3)

REVISIONS

ISSUE	CHANGES
0	ER 30902 KH 8JUN89
1	CN 31122 A JCA 13 SEP 89

KINGS PART NO.	KEYING ANGLE
2971-3-1	42°
2971-3-2	54°
2971-3-3	66°
2971-3-4	78°
2971-3-5	90°
2971-3-6	102°
2971-3-7	114°
2971-3-8	126°
2971-3-9	138°
2971-3-10	150°
2971-3-11	162°
2971-3-12	174°
2971-3-13	186°
2971-3-14	194°
2971-3-15	210°
2971-3-16	222°
2971-3-17	234°
2971-3-18	246°
2971-3-19	258°
2971-3-20	270°
2971-3-21	282°
2971-3-22	294°
2971-3-23	306°
2971-3-24	318°

S-D

SCALE
APPROX SURFACE AREA
USED ON
REF

PART NO. & ANGLE TABLE

DRAWN <i>M.Z.B.</i>	DATE <i>9 MAY 89</i>
APPR <i>CT</i>	DATE <i>15 MAY 89</i>
APPR	DATE



2971-3-*
(SHEET 3 OF 3)

UNLESS OTHERWISE SPECIFIED:

- 1. TOLERANCES: FRACTIONS & 2 PLACE DECIMALS ± .010
- 3 PLACE DECIMALS ± .004
- ANGLES ± 0°30'
- CONCENTRICITY OF ANY 2 DIAMETERS MAY

- 2 REMOVE ALL BURRS, BREAK SHARP EDGES .005 MAX.
- 3. NO FILLETS PERMITTED.
- 4. SURFACE ROUGHNESS 63 MICROINCHES RMS MAX.
- 5 ALL DIMENSIONS PRIOR TO PLATING.