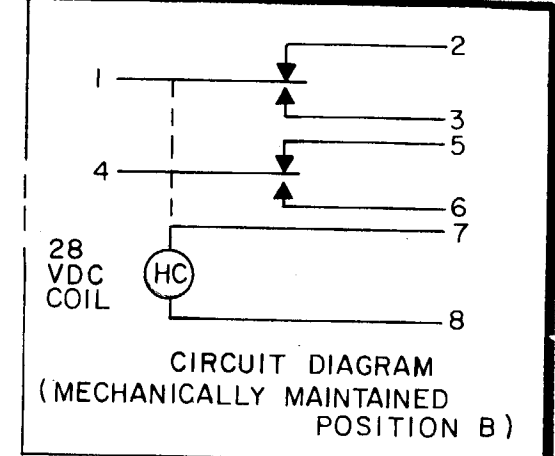


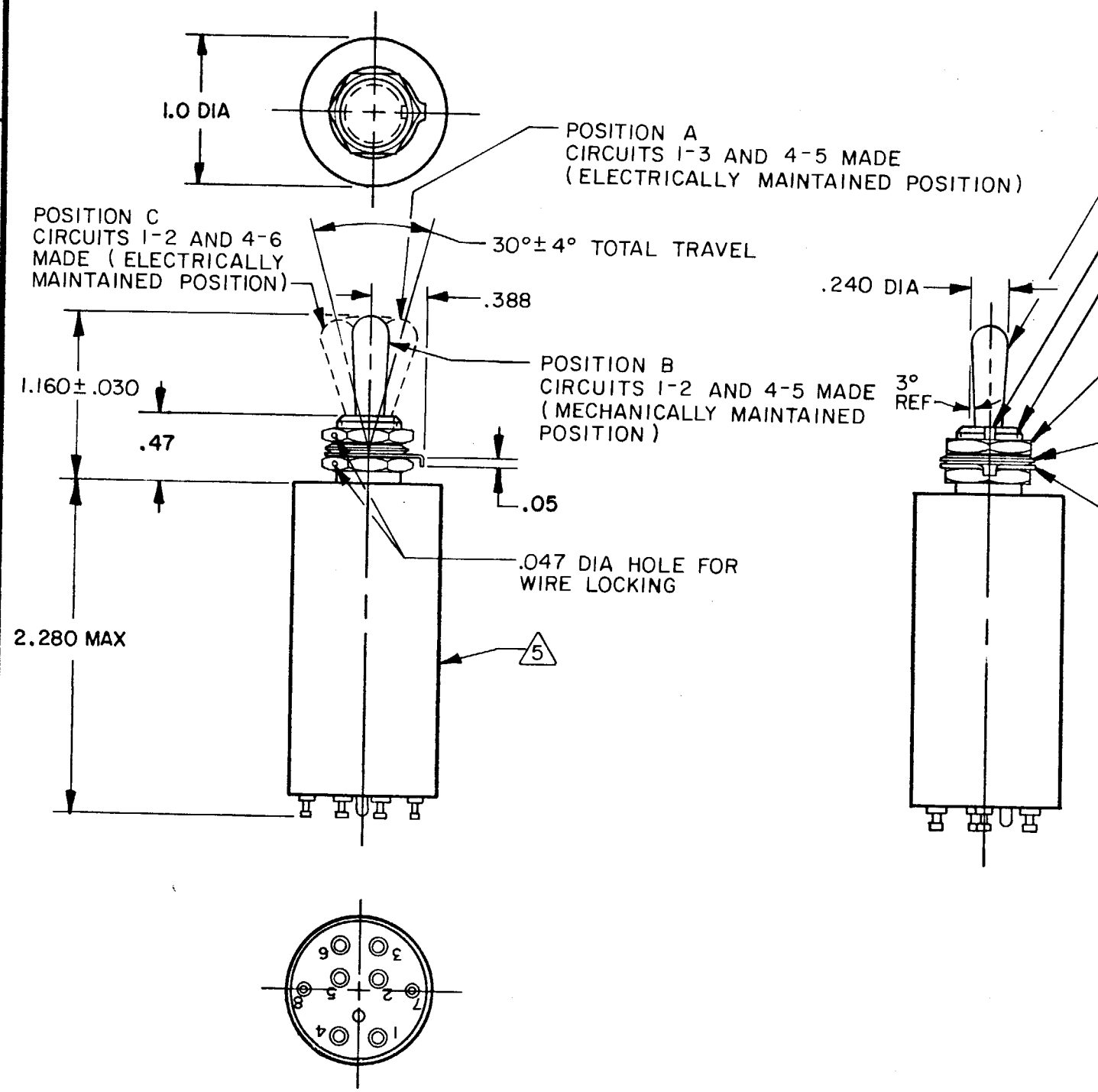
MICRO SWITCH
 FREEPORT, ILLINOIS, U.S.A.
 A DIVISION OF HONEYWELL
 FED. MFG. CODE 91929

**SWITCH - TOGGLE
 (MAGNETIC HOLD-IN)**

CATALOG LISTING
27ET71-T



M 27ET71-T
 DRAWING NUMBER
 ISSUE 6
 REVISIONS
 A OBS DWG CO-47551
 7 WJM APR 80
 B REINST PR-12152
 WJM MAY 83
 C CO54089
 J A P DEC 83
 D CO 66786
 M A M FEB 90
 CHECK 8 MAY 83
 CHECK 17 MAY 83
 WJM
 FO-9285 1-B



- LEVER (MATTE FINISH)
- .072 ± .004 WIDE X .031 DEEP KEYWAY TO WITHIN .250 OF SHOULDER
- 15/32-32 UNS THREAD TO WITHIN .090 OF SHOULDER
- HEX NUT .625 ACROSS FLATS X .125 THICK (2) $\triangle 7$
- INTERNAL TOOTH LOCKWASHER .59 DIA X .018 REF THICK $\triangle 7$
- KEYING WASHER .72 DIA X .031 THICK TAB, .110 WIDE $\triangle 7$

- NOTES**
- 1 - EXPOSED PARTS ARE OF CORROSION RESISTANT MATERIAL OR ARE SUITABLY PROTECTED TO PREVENT CORROSION. ENCLOSURE PER FEDERAL STANDARD 595
 - 2 - SWITCH SEALED PER MIL-S-5594
 - $\triangle 3$ HOLD IN VOLTAGE: THE MINIMUM SPECIFIED VOLTAGE AT WHICH THE LEVER WILL REMAIN ACTUATED, HOLD IN MAY OCCUR AT A LOWER VALUE. DROP OUT VOLTAGE: THE VOLTAGE RANGE IN WHICH THE LEVER WILL BE RELEASED
 - 4 - CIRCUITS CAN BE TRANSFERRED MANUALLY. ENERGIZING THE COIL WILL NOT CAUSE TRANSFER OF CIRCUITS
 - $\triangle 5$ CIRCUIT IDENTIFICATION IS SHOWN ON SWITCH
 - $\triangle 6$ WEIGHT OF SWITCH ONLY IS 4.0 OZ MAX
 - $\triangle 7$ HARDWARE MAY BE FURNISHED UNASSEMBLED PER MIL-S-5594

THIS DRAWING COVERS A PROPRIETARY ITEM AND IS THE PROPERTY OF MICRO SWITCH, A DIVISION OF HONEYWELL. THIS DRAWING IS NOT TO BE COPIED OR USED WITHOUT THE APPROVAL OF MICRO SWITCH.		SCALE FULL	
CHARACTERISTICS $\triangle 3$		DO NOT SCALE PRINT	
SOLENOID RATING AT 20°C		TOLERANCES	
STEADY STATE LIMITS ----- 20-29 VDC		APPLY TO DESIGN UNITS. CONVERSIONS ARE ONLY FOR REFERENCE. UNLESS NOTED, TOLERANCES ARE \pm	
HOLD IN ----- 15 VDC		DIM. mm TOL. mm/in DIM. in TOL. mm/in	
DROP OUT ----- 0-15 VDC		NO PLACES X 1/04	
COIL RESISTANCE ----- 220 OHM MIN		ONE PLACE X,X 0.4/018 X X 0.8/03	
OPERATING FORCE ----- 7 LB MAX		TWO PLACES X,XX 0.15/006 X,XX 0.38/015	
OVERRIDE FORCE AT 29 VDC ----- 10 LB MAX		THREE PLACES X,XXX 0.13/005	
ELECTRICAL DATA		DESIGN UNITS <input type="checkbox"/> SI METRIC <input checked="" type="checkbox"/> US CUSTOMARY	
CONTACT ARRANGEMENT		THIRD ANGLE PROJECTION	
SPDT (2)			
RATING IN AMPERES		WEIGHT $\triangle 6$	
SEA LEVEL 65,000 FT			
RES IND MOTOR RES IND MOTOR			
28 VOLTS DC 1 .5 1 .5			