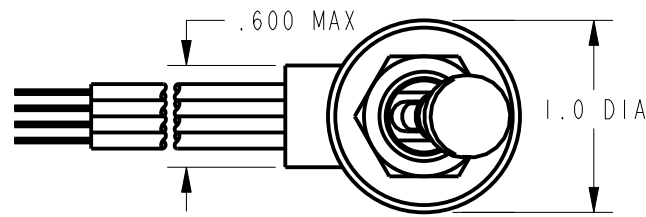


MICROSWITCH
a Honeywell Division

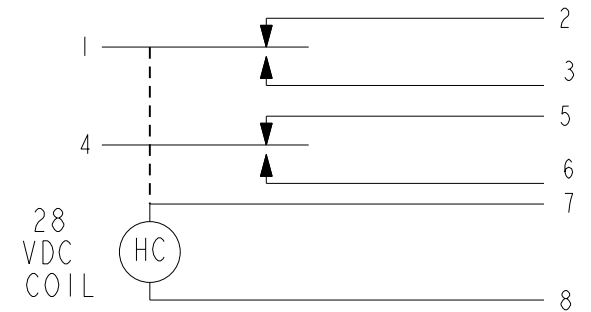
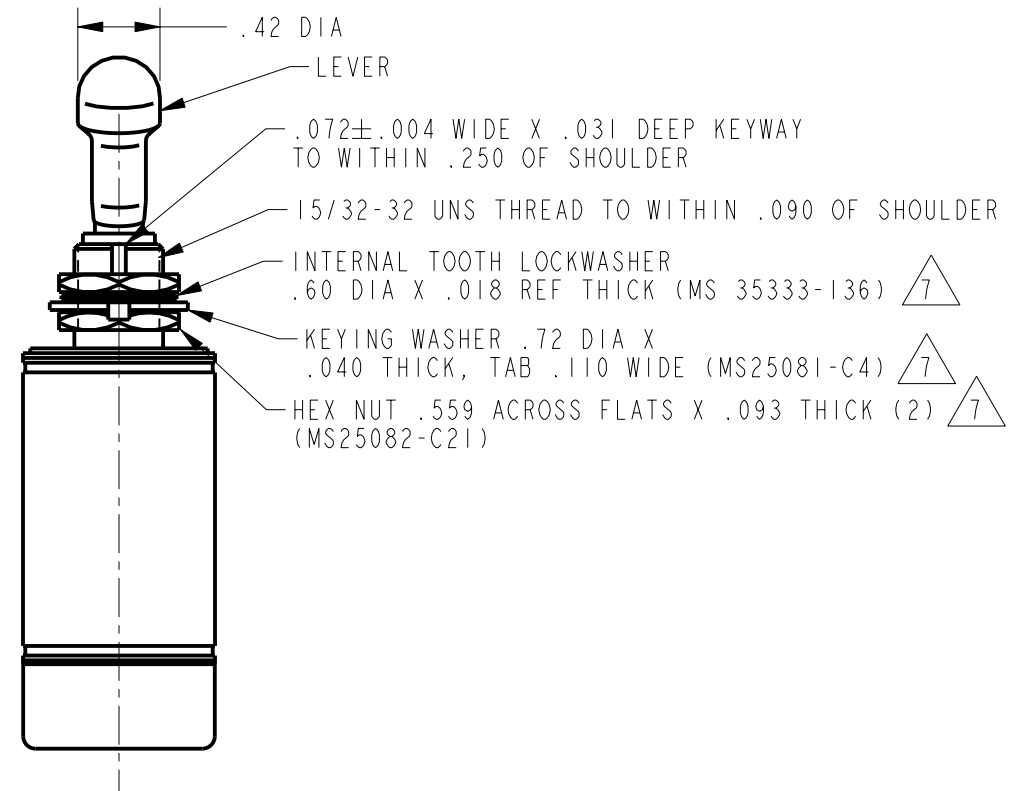
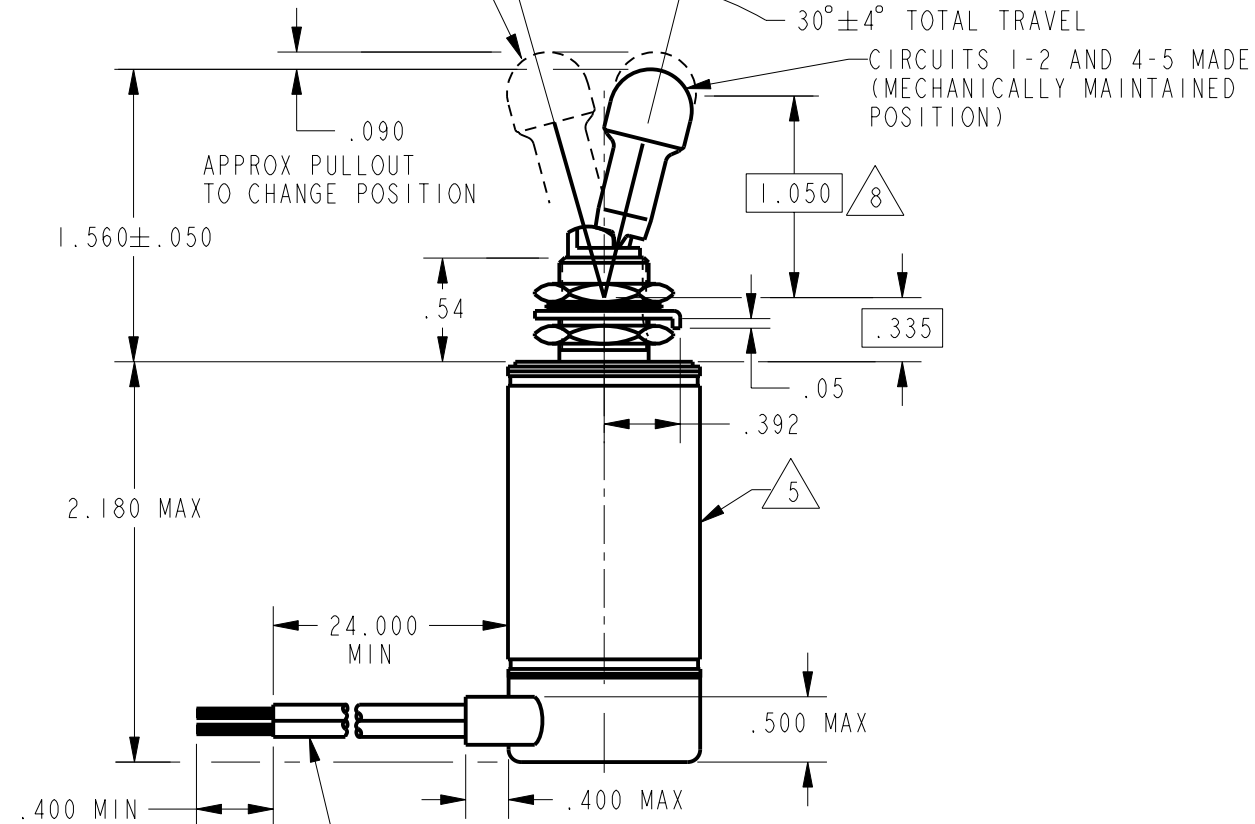
FED. MFG. CODE 91929

**SWITCH - TOGGLE
(MAGNETIC HOLD-IN)**

CATALOG LISTING
26ET25-2-G



CIRCUITS 1-3 AND 4-6 MADE
(ELECTRICALLY MAINTAINED
POSITION)



CIRCUIT DIAGRAM
(MECHANICALLY MAINTAINED
POSITION)

CATALOG LISTING
26ET25-2-G

PAGE 1 OF 1

REPLACES
RELEASE NO. PR-4891
CHECK
ISSUE
14

REVISIONS
A 205955
C S L
10 JUL 02

CHECK
S A V 10 JUL 02

CHECK
S A V 10 JUL 02

PTC/CAD 2D
DRAWN
C S L 10 JUL 02

THIS DRAWING COVERS A PROPRIETARY ITEM AND IS THE PROPERTY OF MICRO SWITCH, A DIVISION OF HONEYWELL. THIS DRAWING IS NOT TO BE COPIED OR USED WITHOUT THE APPROVAL OF MICRO SWITCH

CHARACTERISTICS	VALUES
SOLENOID RATING AT 20°C	
STEADY STATE LIMITS	20-30 VDC
HOLD IN	15 VDC
DROP OUT	0.5-15 VDC
OVERRIDE FORCE AT 30 VDC	2.5-10 LBS
OPERATING FORCE	7 LB MAX
COIL RESISTANCE	220 OHM MIN
PULL TO UNLOCK	3-5 LBS

ELECTRICAL DATA	
CONTACT ARRANGEMENT S P D T (2)	
VOLTAGE	RATINGS IN AMPERES
	SEA LEVEL 65,000 FT
28 VOLTS DC	INRUSH RES IND MOTOR INRUSH RES IND MOTOR
	4 2.5 4 4 2.0 4

THIRD ANGLE PROJECTION	
SCALE	FULL
DO NOT SCALE PRINT	
UNLESS OTHERWISE SPECIFIED TOLERANCES ARE	
ONE PLACE	(.0) ±.030
TWO PLACE	(.00) ±.015
THREE PLACE	(.000) ±.005
ANGLES	±
WEIGHT	8.0 OZ MAX

NOTES

- 1 - EXPOSED PARTS ARE OF CORROSION RESISTANT MATERIAL OR ARE SUITABLY PROTECTED TO PREVENT CORROSION, ENCLOSURE FINISHED WITH BLUE EPOXY BASED ENAMEL COLOR NO. 25184 PER FEDERAL STANDARD 595
- 2 - SWITCH SEALED PER MIL-S-5594
- 3 - HOLD IN VOLTAGE: THE MINIMUM SPECIFIED VOLTAGE AT WHICH THE LEVER WILL REMAIN ACTUATED. HOLD IN MAY OCCUR AT A LOWER VALUE. DROP OUT VOLTAGE: THE VOLTAGE RANGE IN WHICH THE LEVER WILL BE RELEASED
- 4 - CIRCUITS CAN BE TRANSFERRED MANUALLY. ENERGIZING THE COIL WILL NOT CAUSE TRANSFER OF CIRCUITS
- 5 - CIRCUIT IDENTIFICATION IS SHOWN ON SWITCH
- 6 - SWITCHES DO NOT NECESSARILY OPERATE SIMULTANEOUSLY
- 7 - HARDWARE MAY BE FURNISHED UNASSEMBLED PER MIL-S-5594
- 8 - FORCE TO BE APPLIED AT THIS POINT IN A DIRECTION PERPENDICULAR TO THE LEVER LONGITUDINAL AXIS

ANSI Y14.5M-1982 APPLIES