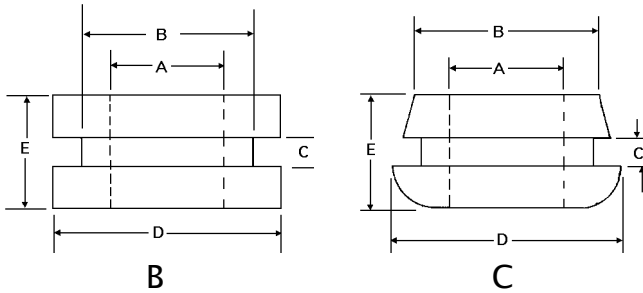
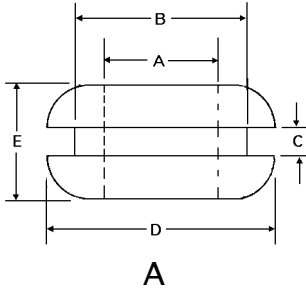


# Grommets



Alternative sizes and shapes are available in quantity from factory. Call for details.

PART	ILLUS.	INSIDE DIA.	MNTG. HOLE	CHASSIS THKNS.	O.D.	THKNS.
		A	B	C	D	E
2185	A	1/8	3/16	1/16	5/16	3/16
91114		5/32	1/4		11/32	
2058					3/8	
2172		3/16	5/16	7/16	7/32	
91103				7/16	1/8	9/16
2170		1/4	3/8	1/16	5/8	1/4
91116	B	5/16	1/2	1/8	3/4	3/8
91106	C			3/16	5/8	1/2
2174	A		7/16	1/16	19/32	15/64
91117				1/8	9/16	3/8
91107			3/32	5/8	5/16	
2175			3/8	1/2	41/64	1/4
2177	7/16	9/16	3/4	1/4		
2186	1/2	3/4	1/16	1/16	5/16	
2188	9/16	13/16				
2187	5/8	7/8				1-1/8
2189	3/4	7/8	1/32	1"	5/32	

- Grommets are made from Black Buna-S Synthetic Rubber (SBR), approximately 60 durometer.
- Prevents wire chafing through holes in panels from 1/16" to 7/8" as indicated in table.

## Caterpillar Grommets

- Insulates and prevents chafing wires.
- Made of black nylon, type 6/6.

PART NO.	CHASSIS THICKNESS RANGE	DIMENSIONS				LENGTH
		PANEL A	WIDTH B	THCK C	HEIGHT D	
2692	.042-.052	.047	.139	.047	.190	25'
2693	.075-.085	.080	.182	.052	.200	25'
2694	.115-.125	.120	.232	.057	.220	25'

