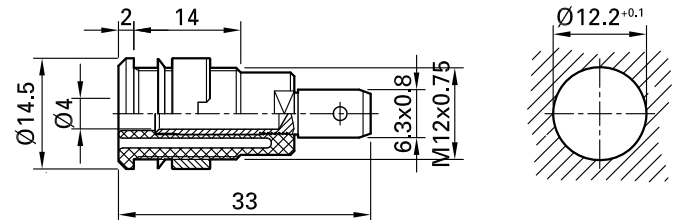


## SLB4-F6,3



Item number 23.3060-\*

Insulated, rigid,  $\varnothing$  4 mm, accepting spring-loaded  $\varnothing$  4 mm plugs with rigid insulating sleeve. Machined brass. The socket is screwed into pre-drilled panels of plastic, metal, etc. Connection: Flat connecting tab 6,3 mm x 0,8 mm.

Technical data	
Diameter of plug system	4 mm
Rated Values	1000 V, CAT III, 32 A
Surface treatment electrical contact	Au
Base material electrical contact	CuZn
Colours *	20 21 22 23 24 25 26 27 28 29
Test accessory acc. to	IEC EN 61010-2-030
Component parts	I-A2/4; B4-E-IM4
Supplied assembly material	MUR/M12x0,75; SSP4
Approvals	UR
Remarks	Accessories: Flat connecting receptacle FSH6,3x0,8; Tube spanner SS2; Tube spanner SS425