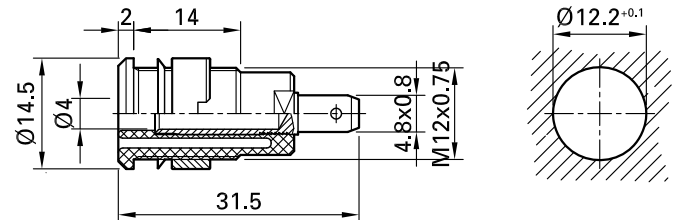


SLB4-F



Item number 23.3000-*

Insulated, rigid, \varnothing 4 mm, accepting spring-loaded \varnothing 4 mm plugs with rigid insulating sleeve. Machined brass. The socket is screwed into pre-drilled panels of plastic, metal, etc. Connection: Flat connecting tab 4,8 mm x 0,8 mm.

Technical data	
Diameter of plug system	4 mm
Rated Values	1000 V, CAT III, 24 A
Surface treatment electrical contact	Au
Base material electrical contact	CuZn
Colours *	20 21 22 23 24 25 26 27 28 29
Test accessory acc. to	IEC EN 61010-2-030
Supplied assembly material	MUR/M12x0,75; SSP4
Material insulating part	PA
Approvals	UR
Remarks	Accessories: Flat connecting receptacle FSH4,8x0,8; Tube spanner SS2; Tube spanner SS425