

Printview: Male header (for PCBs); Straight solder pin 1 x 1 mm; 11-pole; pin spacing 7.62 mm / 0.3 in; with closed end; Vertical PCB mounting - Item No.: 231-741/001-000

WAGO® online catalog / eShop

Male header (for PCBs); Straight solder pin 1 x 1 mm; 11-pole; pin spacing 7.62 mm / 0.3 in; with closed end; Vertical PCB mounting

Item No.: 231-741/001-000



Male header (for PCBs); Straight solder pin 1 x 1 mm; 11-pole; pin spacing 7.62 mm / 0.3 in; with closed end; Vertical PCB mounting

Marking

RoHS ✓
Compliant

Business data

Supplier	WAGO
Item no.	231-741/001-000
EAN	4044918868006
Content	1
Order amount	50
Customer item number	

Notes

1.2 x 1.2mm solder pins allow nominal current up to 16A, enhancing stability of shorter headers Enclosed on each side, the pin housing design prevents mismatching Coding option available

Technical data

Miscellaneous

No. of Poles	11
Color	orange
Ratings according to 1	IEC/EN 60664-1
Overvoltage category EN 1	III
Pollution degree (1)	2
Rated voltage EN (1) [V]	630 [V]
Rated surge voltage (1) [kV]	6 [kV]

Technical data	
Nominal current [A]	12 [A]
Overvoltage category EN 2	II
Degree of pollution (2)	2
Rated voltage EN (2) [V]	1000 [V]
Bemessungsstossspannung (2) [kV]	6 [kV]
Nominal current (2) [A]	12 [A]
Overvoltage category EN 3	III
Degree of pollution (3)	3
Rated voltage EN (3) [V]	500 [V]
Rated surge voltage (3) [kV]	6 [kV]
Nominal current (3) [A]	12 [A]
Solder pin length [mm]	5 [mm]
Solder pin width A [mm]	1 [mm]
Solder pin width B [mm]	1 [mm]
Drilled hole diameter [mm] [mm]	1.4 [mm]
Tolerance of drilled hole diameter [mm] [mm]	+0.1 [mm]
Material group	I
Insulating material	Polyamide 6.6 (PA 6.6)
Flammability rating per UL 94	V0
Lower limit temperature [C]	-60 [C]
Upper temperature limit [C]	100 [C]
Contact material	Electrolytic copper (Ecu)
Contact plating	tin-plated
Fire load [MJ]	0.09 [MJ]
Weight [g]	4.408 [g]
Width [mm]	84.2 [mm]
Width [in]	3.315 [in]
Height [mm]	12 [mm]
Height [in]	0.472 [in]
Length [mm]	8.4 [mm]
Length [in]	0.331 [in]
Pin spacing from [mm]	7.62 [mm]
Pin spacing up to [mm]	7.62 [mm]
Pin spacing from [in]	0.3 [in]

Printview: Male header (for PCBs); Straight solder pin 1 x 1 mm; 11-pole; pin spacing 7.62 mm / 0.3 in; with closed end; Vertical PCB mounting - Item No.: 231-741/001-000

Technical data

Pin spacing up to [in]	0.3 [in]
------------------------	----------

Approbation

Item No.	Registration	Registration no.	Voltage [V]	Current [A]	Cross section [mm ² , AWG]
231-741/001-000	ABS	04-HG469925/1-PDA	400	12	
231-741/001-000	BV	11915/A0	400	16	2,5
231-741/001-000	CCA	5764	400	12	1x1
231-741/001-000	CCA	2160224.01	400	12	
231-741/001-000	CSA	154112-1466354	300	10	
231-741/001-000	GL	17296-00HH	400	12	
231-741/001-000	KEMA	2083746.02	400	12	1x1
231-741/001-000	KR	HMB05880-EL003	250/400	12/16	2,5
231-741/001-000	LR	96/20035	400	12	
231-741/001-000	RMR	11130002	400	12	
231-741/001-000	UL	E45171	600	10	
231-741/001-000	UL	E45172	300	10	

Accessories

Coding

Item no.	Description	Pack. unit (Sub Pack)
231-130	Coding key; snap-on type	100
231-500	Spacer; for formation of groups	100

Accessories

Counterpart

Item no.	Description	Pack. unit (Sub Pack)
2231-711/008-000	Female connector; with snap-in mounting feet; 11-pole; with integrated push-buttons; pin spacing 7.62 mm / 0.3 in; with 209-137 mounting adapter also for DIN 35 rail; codable; with 2 latches	25
2231-711/026-000	Female connector; with integrated push-buttons; 11-pole; pin spacing 7.62 mm / 0.3 in; codable; with 2 latches	25
2231-711/031-000	Female connector; with fixing flanges; 11-pole; with integrated push-buttons; pin spacing 7.62 mm / 0.3 in; codable; with 2 latches	10
2231-711/037-000	Female connector; with locking levers; 11-pole; with integrated push-buttons; pin spacing 7.62 mm / 0.3 in; codable; with 2 latches	10
231-2711/026-000	2-conductor female connector; 11-pole; pin spacing 7.62 mm / 0.3 in; codable; with 2 latches	25
231-2711/037-000	2-conductor female connector; with locking levers; 11-pole; pin spacing 7.62 mm / 0.3 in; codable; with 2 latches	10
231-711/008-000	Female connector; with snap-in mounting foot; 11-pole; pin spacing 7.62 mm / 0.3 in; with 209-137 mounting adapter also for DIN 35 rail; codable; with 2 locking latches; Plate thickness 0.6x1.2 mm	25
231-711/026-000	Female connector; with coding finger; with latch	25
231-711/027-000	Female connector; with fixing flanges; 11-pole; pin spacing 7.62 mm / 0.3 in; with reinforcing strips; codable; with 2 locking latches; for racks and feedthrough connections	10
231-711/031-000	Female connector; with fixing flanges; 11-pole; pin spacing 7.62 mm / 0.3 in; codable; with 2 locking latches; for panel mounting; for screw or similar mounting types	10
231-711/037-000	Female connector; with locking levers; with coding finger; with latch	10
232-771	Female connector; with straight solder pins; 11-pole; pin spacing 7.62 mm / 0.3 in; solder pin 0.6x1 mm; codable; Vertical PCB mounting; with 2 locking latches	25
232-771/031-000	Female connector; with straight solder pins; 11-pole; with feedthrough flanges; pin spacing 7.62 mm / 0.3 in; solder pin 0.6x1 mm; codable; Vertical PCB mounting	10
232-771/047-000	Female connector; with straight solder pins; 11-pole; with spacers; pin spacing 7.62 mm / 0.3 in; solder pin 0.6x1 mm; codable; Vertical PCB mounting	10
232-871	Female connector; with angled solder pins; 11-pole; pin spacing 7.62 mm / 0.3 in; solder pin 0.6x1 mm; codable; Horizontal PCB mounting; with 2 locking latches	25
232-871/031-000	Female connector; with angled solder pins; 11-pole; with feedthrough flanges; pin spacing 7.62 mm / 0.3 in; solder pin 0.6x1 mm; codable; Horizontal PCB mounting	10
232-871/039-000	Female connector; with angled solder pins; 11-pole; with locking levers; pin spacing 7.62 mm / 0.3 in; solder pin 0.6x1 mm; codable; Horizontal PCB mounting	10

Printview: Male header (for PCBs); Straight solder pin 1 x 1 mm; 11-pole; pin spacing 7.62 mm / 0.3 in; with closed end; Vertical PCB mounting - Item No.: 231-741/001-000

Accessories

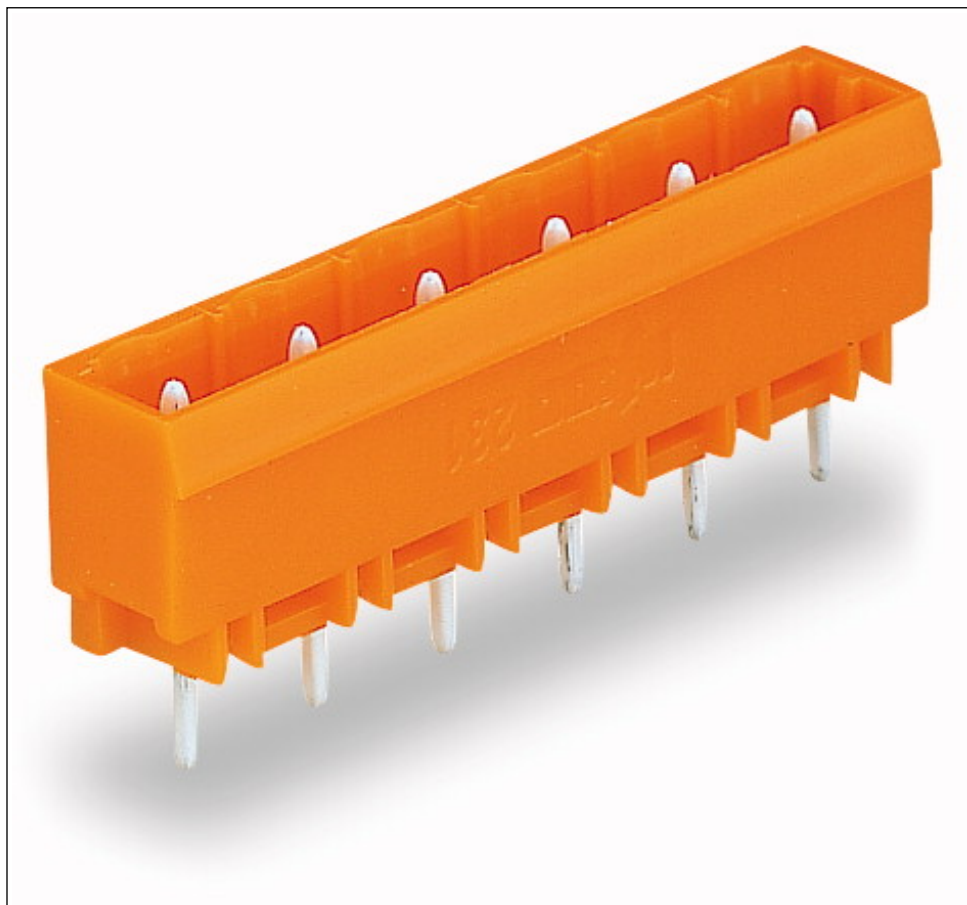
232-871/047-000	Female connector; with angled solder pins; 11-pole; with spacers; pin spacing 7.62 mm / 0.3 in; solder pin 0.6x1 mm; codable; Vertical PCB mounting	10
732-131/026-000	Angled female connector; 11-pole; pin spacing 7.62 mm / 0.3 in; codable; Conductor exit opposite to latches; with 2 locking latches	25

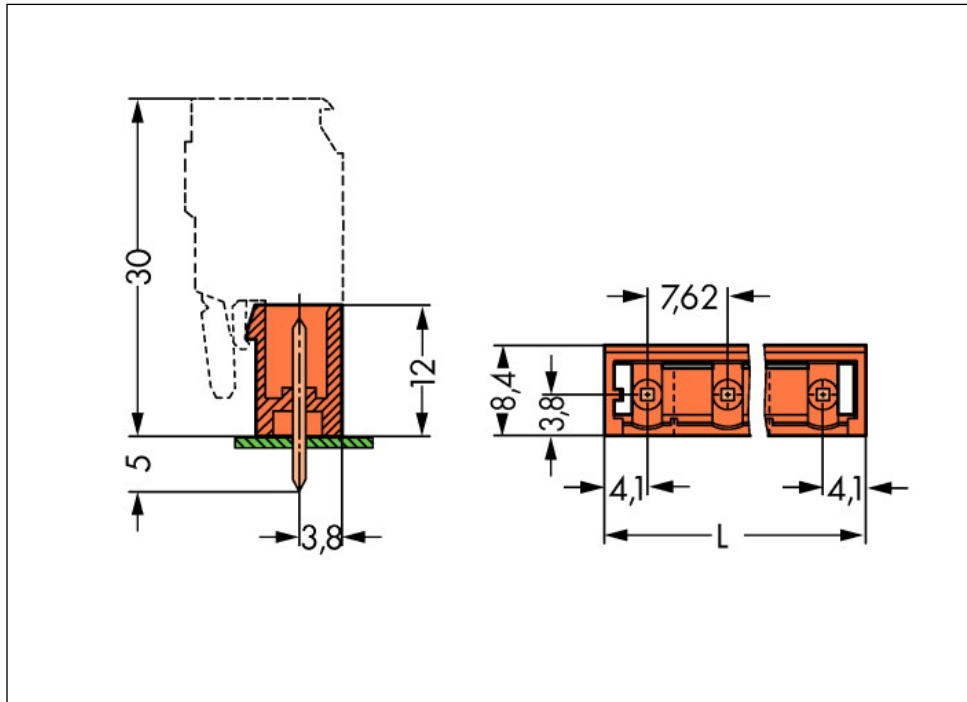
General accessory

Item no.	Description	Pack. unit (Sub Pack)
210-657	Operating tool with partially insulated shaft; blade (3.5 x 0.5) mm; short; suitable for 260, 261, 262, 264, 270, 280, 281, 869, 870 and 880 Series	1
210-658	Operating tool with partially insulated shaft; blade (3.5 x 0.5) mm; short; angled; particularly suitable for 280 Series actuator and sensor terminal blocks and also for Series 260, 261, 262, 264, 280, 281, 869, 870, 880, 2002,	1
210-720	Operating tool with partially insulated shaft; Type 2, blade (3.5 x 0.5) mm; suitable for 260, 261, 262, 264, 270, 280, 281, 290, 775, 776, 777, 769, 780, 781, 869, 870, 880, 2002, 2003, 2004, 2005 and 2022 Series	1

Printview: Male header (for PCBs); Straight solder pin 1 x 1 mm; 11-pole; pin spacing 7.62 mm / 0.3 in; with closed end; Vertical PCB mounting - Item No.: 231-741/001-000

Images & drawings





Address

WAGO Kontakttechnik GmbH & Co. KG

Hansastr. 27

32423 Minden

Telefon: 0571/887-0

Fax: 0571/887-169

<http://www.wago.com>

© WAGO Kontakttechnik GmbH & Co. KG

Technische Änderungen und Irrtümer vorbehalten.