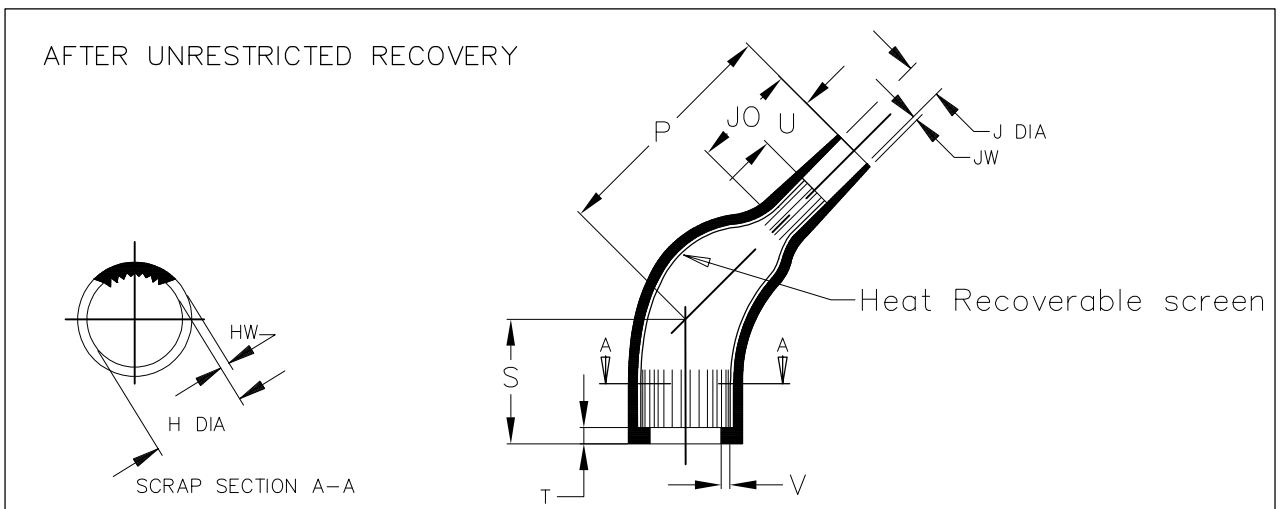
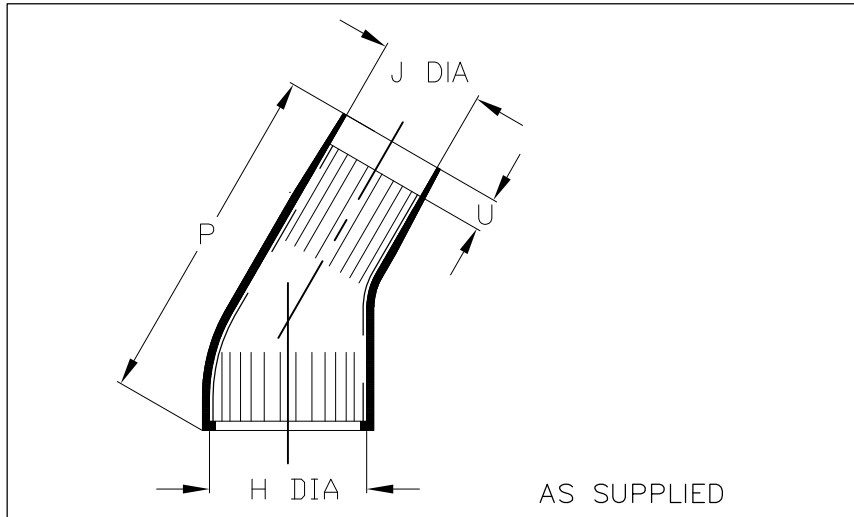


REVISIONS

P	LTR	DESCRIPTION	DATE	DWN	APVD
	1	PRODUCTION ISSUE	19JUL2016	KH	AP



Part No.	H		J		P		S REF b	T REF b	U		V REF b	JO REF b	HW ± 30% b	JW ± 30% b
	MIN	MAX	MIN	MAX	MIN	MAX			MIN	± 20%				
	a	b	a	b	a	b			a	b				
222S121-XXC-G28-0	14 {0.55}	10.4 {0.41}	10 {0.39}	5.0 {0.20}	45 {1.77}	31 {1.22}	14 {0.55}	3.0 {0.12}	5.0 {0.20}	10 {0.39}	1.0 {0.04}	15 {0.59}	1.5 {0.06}	1.0 {0.04}
222S132-XXC-G28-0	19 {0.75}	14.2 {0.56}	12 {0.47}	6.0 {0.24}	54 {2.13}	40 {1.57}	16 {0.63}	3.0 {0.12}	5.0 {0.20}	10 {0.39}	1.0 {0.04}	17 {0.67}	1.5 {0.06}	1.0 {0.04}
222S142-XXC-G28-0	25 {0.98}	18.0 {0.71}	14 {0.55}	7.2 {0.28}	63 {2.48}	43 {1.69}	16 {0.63}	3.0 {0.12}	6.0 {0.24}	10 {0.39}	1.0 {0.04}	18 {0.71}	2.0 {0.08}	1.0 {0.04}
222S152-XXC-G28-0	30 {1.18}	22.4 {0.88}	20 {0.79}	8.5 {0.33}	70 {2.76}	50 {1.97}	21 {0.83}	3.0 {0.12}	7.0 {0.28}	12 {0.47}	1.0 {0.04}	20 {0.79}	2.0 {0.08}	1.0 {0.04}
222S163-XXC-G28-0	36 {1.42}	28.2 {1.11}	24 {0.94}	10.0 {0.39}	90 {3.54}	64 {2.52}	26 {1.02}	3.0 {0.12}	12.0 {0.47}	20 {0.79}	1.7 {0.07}	28 {1.10}	2.2 {0.09}	1.5 {0.06}
222S174-XXC-G28-0	43 {1.69}	35.1 {1.38}	32 {1.26}	15.8 {0.62}	111 {4.37}	75 {2.95}	29 {1.14}	3.0 {0.12}	12.0 {0.47}	20 {0.79}	1.7 {0.07}	31 {1.22}	3.0 {0.12}	1.5 {0.06}

RELEASED FOR PUBLICATION

ALL RIGHTS RESERVED.

THIS DRAWING IS UNPUBLISHED.

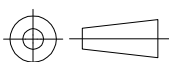
© COPYRIGHT - 2017 By - TE Connectivity

DIMENSIONS:

mm[inches]

TOLERANCES UNLESS OTHERWISE SPECIFIED:

- 0 PLC ± -
- 1 PLC ± -
- 2 PLC ± -
- 3 PLC ± -
- 4 PLC ± -
- ANGLES ± -



DWN 19JUL2016

K. HOLAL

CHK 19JUL2016

N. NAGAR

APVD 19JUL2016

A. POOLE

PRODUCT SPEC

—

APPLICATION SPEC

—

WEIGHT

—

CUSTOMER DRAWING

MATERIAL

—

FINISH

—



TE Connectivity

NAME

135DEG BOOT, COATED

222S1XX-XXC-G28-0

SIZE

A4

CAGE CODE

00779

DRAWING NO

—

222S1XX-XXC-G28-0

RESTRICTED TO

—

SCALE

DNS

SHEET

1 OF 2

REV

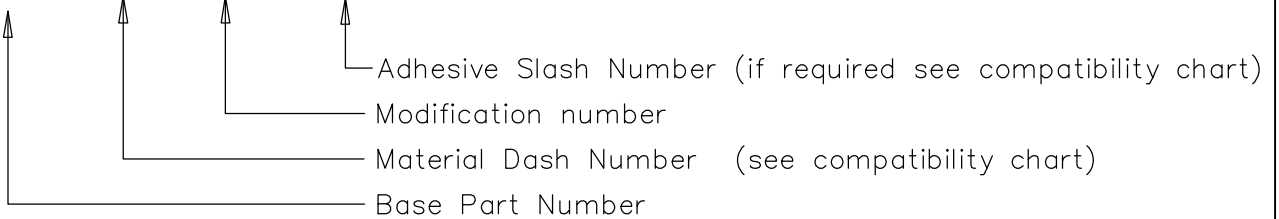
1

REVISIONS				
P	LTR	DESCRIPTION	DATE	APVD
-	-	SEE SHEET 1	-	-

COMPATABILITY CHART			
Material Dash Number	Material Description	SPEC No.	Coating Slash No.
-3C	POLYOLEFIN/SILVER COMPOSITE	RW-3045	/86, /200
-25C	ELASTOMER/SILVER COMPOSITE	RW-3047	/86, /200
-100C	ZEROHALOGEN/SILVER COMPOSITE	RW-3046	/86, /200

ORDERING INFORMATION

222S1\*\*-\*\*C-G28-0/\*\*



NOTES

- As supplied dimensions are for uncoated parts, when coating is added entry diameters will reduce by 1.5mm Max.
- For method of measuring recovered diameter. see appropriate RW specification (SPEC Number), section 2.2,

RELEASED FOR PUBLICATION

ALL RIGHTS RESERVED.

THIS DRAWING IS UNPUBLISHED.

© COPYRIGHT 2017 By - TE Connectivity

DIMENSIONS: mm[inches]	DWN	K. HOLAL	19JUL2016	MATERIAL	-	FINISH	-
	CHK	N. NAGAR	19JUL2016	TE Connectivity			
	APVD	A. POOLE	19JUL2016				
	TOLERANCES UNLESS OTHERWISE SPECIFIED: 0 PLC ± - 1 PLC ± - 2 PLC ± - 3 PLC ± - 4 PLC ± - ANGLES ± -				NAME	135DEG BOOT, COATED 222S1XX-XXC-G28-0	
PRODUCT SPEC -				SIZE	A4	CAGE CODE	00779
APPLICATION SPEC -				DRAWING NO	C-222S1XX-XXC-G28-0		
WEIGHT -				RESTRICTED TO -			
CUSTOMER DRAWING						SCALE	DNS
						SHEET	2 OF 2
						REV	1