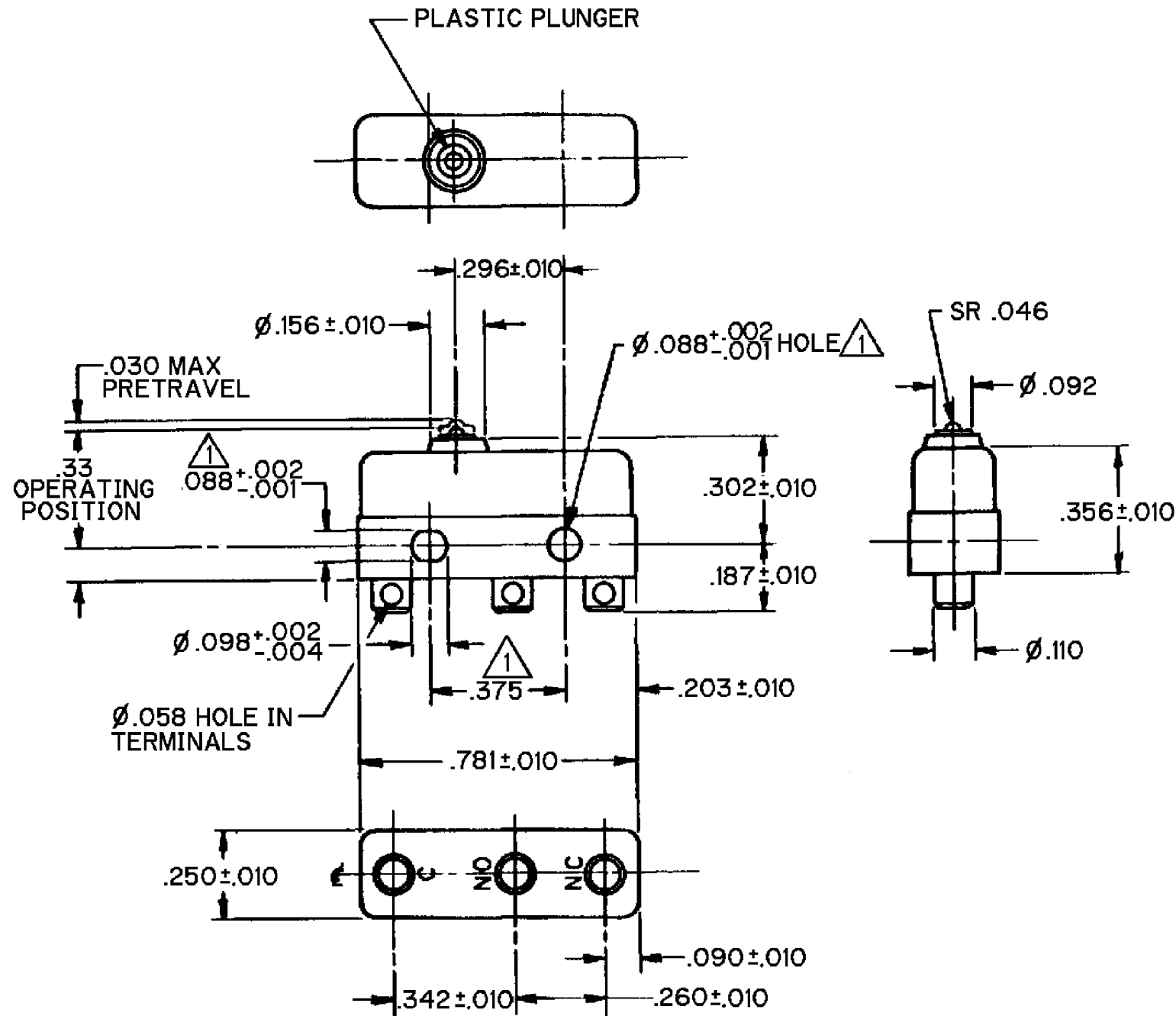


HONEYWELL
PART NUMBER
21SM369
PRODUCT CODE
TXL9903

REV	DOCUMENT	CHANGED BY	CHECK
2	0038111	PK 20MAY08	ASD



- NOTES**
- 1 MOUNTING HOLES WILL ACCEPT PINS OR SCREWS OF Ø.087 MAX ON .375±.002 CENTERS
 - 2 - TERMINALS ARE PLATED FOR SOLDERING
 - 3 - SWITCH WILL WITHSTAND TEMPERATURE OF 250°F

RELEASE NO. PR - 24456

REPLACES -

CHARACTERISTICS

OPERATING FORCE - - - - 3 OZ MAX

RELEASE FORCE - - - - - 1 OZ MIN

DIFFERENTIAL TRAVEL - - - .002 MAX

OVERTRAVEL - - - - - .005 MIN

ELECTRICAL DATA

CONTACT ARRANGEMENT
SPDT

30 VOLTS DC RATING

	SEA LEVEL	50,000 FT
INDUCTIVE	3 AMP	2.5 AMP
RESISTIVE	5 AMP	5 AMP

MAXIMUM INRUSH 24 AMP

APPROVALS	KEMA, CE	5A, 250V ~ T85 1E4	UL, CSA	5A, 250 VAC
-----------	----------	--------------------	---------	-------------

DESIGN UNITS: INCH

TOLERANCES UNLESS NOTED:

NO PLACE X ±

ONE PLACE .X ±

TWO PLACE .XX ±

THREE PLACE .XXX ±

FOUR PLACE .XXXX ±

ANGLES ±

THIRD ANGLE PROJECTION

DRAWN	VK	18 OCT 07
CHECK	RJ	18 OCT 07
THIS DRAWING COVERS A PROPRIETARY ITEM AND IS THE PROPERTY OF HONEYWELL. THIS DRAWING IS NOT TO BE COPIED OR USED WITHOUT THE PERMISSION OF HONEYWELL.		
INTERPRET PER ANSI Y14.5M-1982 OTHER HONEYWELL ENGINEERING STANDARDS MAY APPLY		
RASTER		

Honeywell			
TITLE SWITCH - BASIC			
SIZE	TYPE	DRAWING NAME	REV
B	I	21SM369	2
SCALE	-	WEIGHT .006 LB MAX	SHEET 1 OF 1