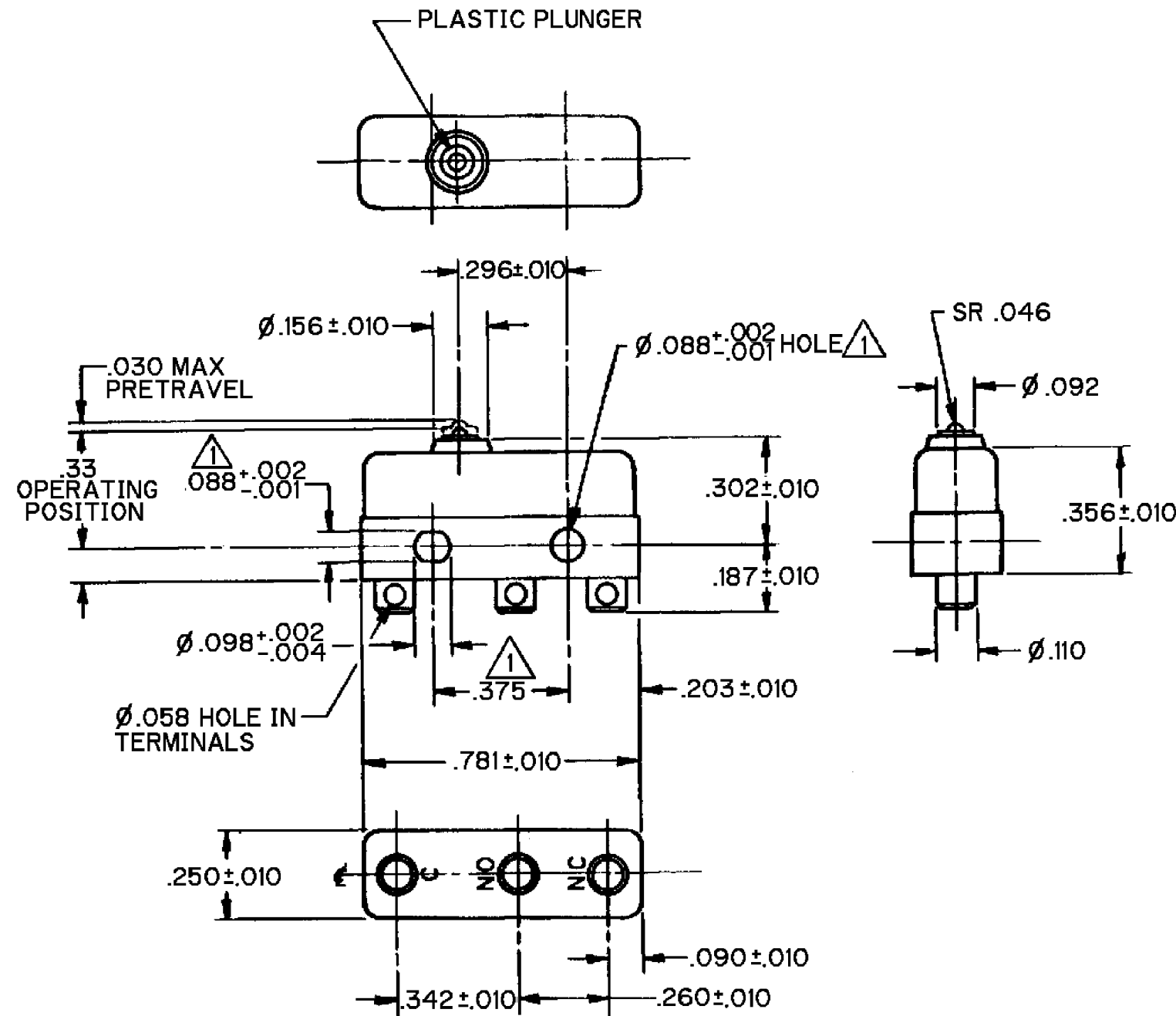


HONEYWELL  
PART NUMBER  
**21SM368**  
PRODUCT CODE  
TXL9902

REV	DOCUMENT	CHANGED BY	CHECK
2	0038111	PK 20MAY08	ASD



- NOTES
- 1 MOUNTING HOLES WILL ACCEPT PINS OR SCREWS OF  $\phi .087$  MAX ON  $.375 \pm .002$  CENTERS
  - 2 - TERMINALS ARE PLATED FOR SOLDERING
  - 3 - SWITCH WILL WITHSTAND TEMPERATURE OF 250°F
  - 4 - MATING CONTACT SURFACES ARE 24K SOLID GOLD OVERLAY

RELEASE NO.  
PR - 24456

REPLACES  
-

CHARACTERISTICS

OPERATING FORCE - - - - 3 OZ MAX

RELEASE FORCE - - - - 1 OZ MIN

DIFFERENTIAL TRAVEL - - - .002 MAX

OVERTRAVEL - - - - - .005 MIN

ELECTRICAL DATA

CONTACT ARRANGEMENT  
SPDT

30 VOLTS DC RATING

	SEA LEVEL	50,000 FT
INDUCTIVE	1/2 AMP	1/2 AMP
RESISTIVE	1 AMP	1 AMP

MAXIMUM INRUSH 2 AMP

KEMA, CE	1A, 250V ~ T85 1E4	
UL, CSA	1A, 125 VAC	

DESIGN UNITS: INCH

TOLERANCES UNLESS NOTED:

NO PLACE	X	±
ONE PLACE	.X	±
TWO PLACE	.XX	±
THREE PLACE	.XXX	±
FOUR PLACE	.XXXX	±
ANGLES		±

THIRD ANGLE PROJECTION

DRAWN	VK	18OCT07
CHECK	RJ	18OCT07
THIS DRAWING COVERS A PROPRIETARY ITEM AND IS THE PROPERTY OF HONEYWELL. THIS DRAWING IS NOT TO BE COPIED OR USED WITHOUT THE PERMISSION OF HONEYWELL.		
INTERPRET PER ANSI Y14.5M-1982 OTHER HONEYWELL ENGINEERING STANDARDS MAY APPLY		

**Honeywell**

TITLE  
**SWITCH - BASIC**

SIZE	TYPE	DRAWING NAME	REV
<b>B</b>	<b>I</b>	<b>21SM368</b>	<b>2</b>

RASTER	SCALE -	WEIGHT .006 LB MAX	SHEET 1 OF 1
--------	---------	--------------------	--------------