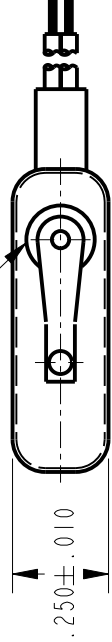
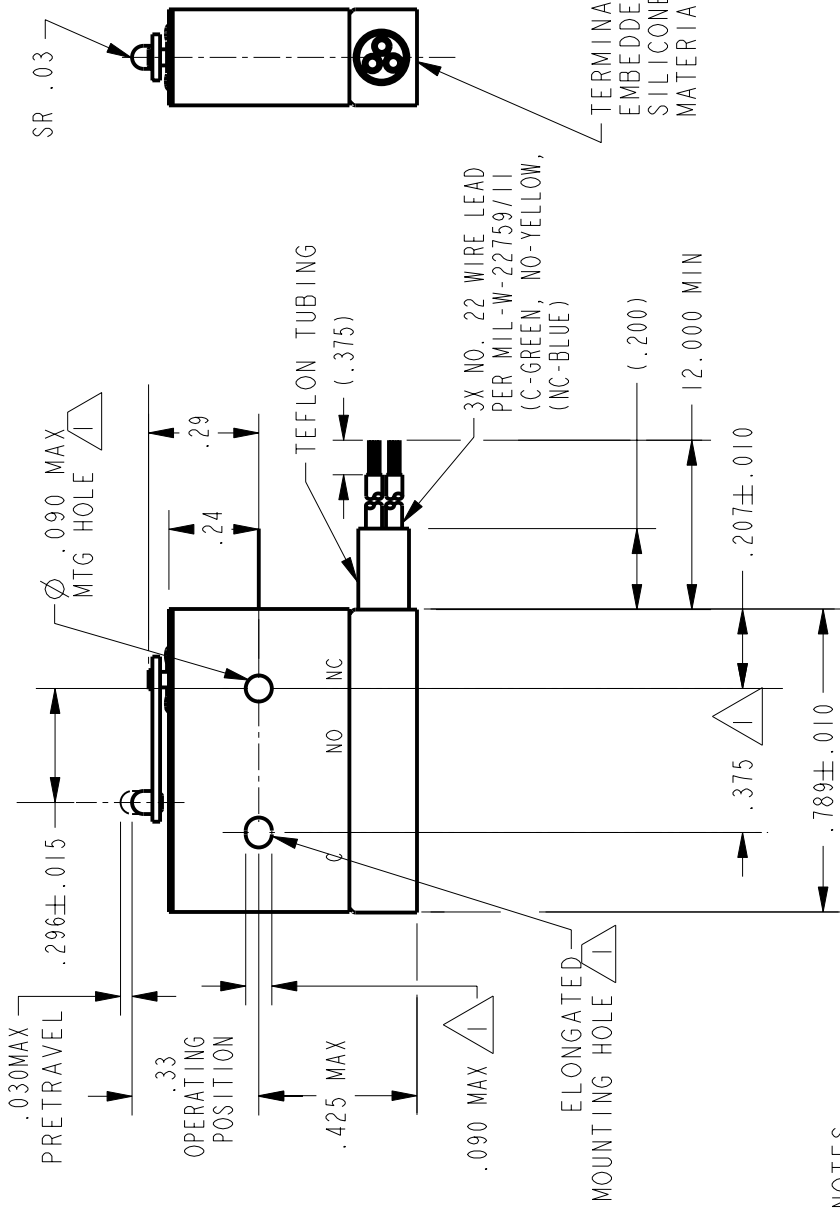


FED. MFG. CODE 91929

WOBBLEFRAM ACTUATOR SEAL



$.250 \pm .010$



NOTES

- 1 MOUNTING HOLES WILL ACCEPT PINS OR SCREWS OF $\varnothing .087$ MAX ON $.375 \pm .002$ CENTERS
- 2 - FOR USE IN TEMPERATURE RANGE -85°F TO $+392^{\circ}\text{F}$ (DOWN TO -300°F IF WIRE LEADS ARE NOT FLEXED)
- 3 - HERMETICALLY SEALED (METAL-TO-METAL, GLASS-TO-METAL)
- 4 - ALL EXPOSED PARTS ARE OF CORROSION RESISTANT MATERIALS
- 5 WEIGHT OF SWITCH ONLY IS 0.014 LB MAX, WEIGHT OF CONDUCTOR GROUP ONLY IS 0.14 LB MAX PER FOOT
- 6 - DO NOT: APPLY MORE THAN 1 1/2 INCH-LBS OF TORQUE WHEN TIGHTENING MOUNTING SCREWS
- 7 - 24K GOLD BIFURCATED MOVABLE CONTACT
- 8 - GOLD ALLOY STATIONARY CONTACTS

ANSI Y14.5M-1982 APPLIES

THIS DRAWING COVERS A PROPRIETARY ITEM AND IS THE PROPERTY OF MICRO SWITCH. A DIVISION OF HONEYWELL. THIS DRAWING IS NOT TO BE COPIED OR USED WITHOUT THE APPROVAL OF MICRO SWITCH.



CHARACTERISTICS

| | |
|---------------------|----------|
| OPERATING FORCE | 7 OZ MAX |
| RELEASE FORCE | 1 OZ MIN |
| DIFFERENTIAL TRAVEL | .006 MAX |
| OVERTRAVEL | .003 MIN |

ELECTRICAL DATA

CONTACT ARRANGEMENT

S P D T

| | |
|--------------------|--|
| 28 VOLTS DC RATING | |
| INDUCTIVE | SEA LEVEL - 1/4 AMP 70,000 FT - 1/4 AMP |
| RESISTIVE | SEA LEVEL - 1/2 AMP 70,000 FT - 1/2 AMP |

SCALE 2:1 SCALE PRINT

UNLESS OTHERWISE SPECIFIED TOLERANCES ARE

ONE PLACE (.0)

TWO PLACE (.00) $\pm .015$

THREE PLACE (.000) $\pm .005$

ANGLES

†

WEIGHT

5

REPLACES

RELEASE NO.

CATALOG LISTING



ISSUE

CHECK

REVISIONS

CHECK

SAV

CHECK

03

JAN 03

LJK

PTC/CAD 20

DRAWN

20HM24-1

PAGE 1 OF 1

1

3

3

5