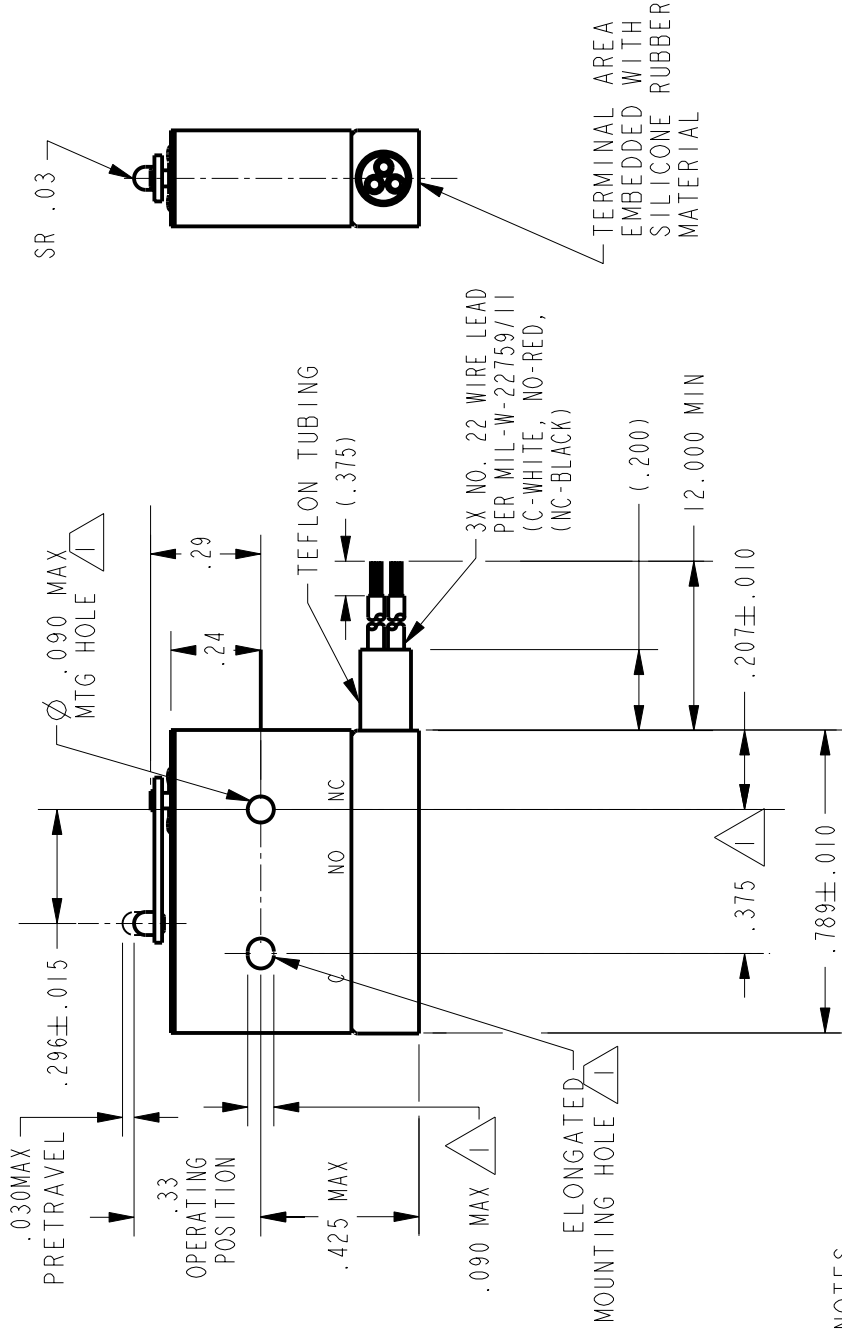
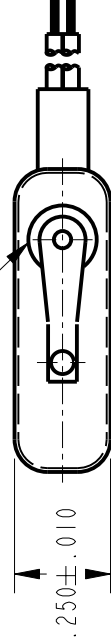


FED. MFG. CODE 91929

WOBBLEFRAM ACTUATOR SEAL



NOTES

- 1 MOUNTING HOLES WILL ACCEPT PINS OR SCREWS OF Ø.087 MAX ON .375 ± .002 CENTERS
- 2 - FOR USE IN TEMPERATURE RANGE -85°F TO +392°F (DOWN TO -300°F IF WIRE LEADS ARE NOT FLEXED)
- 3 - HERMETICALLY SEALED (METAL-TO-METAL, GLASS-TO-METAL)
- 4 - ALL EXPOSED PARTS ARE OF CORROSION RESISTANT MATERIALS
- 5 WEIGHT OF SWITCH ONLY IS 0.014 LB MAX, WEIGHT OF CONDUCTOR GROUP ONLY IS 0.14 LB MAX PER FOOT
- 6 - DO NOT: APPLY MORE THAN 1 1/2 INCH-LBS OF TORQUE WHEN TIGHTENING MOUNTING SCREWS
- 7 - 24K GOLD BIFURCATED MOVABLE CONTACT
- 8 - GOLD ALLOY STATIONARY CONTACTS

ANSI Y14.5M-1982 APPLIES

THIS DRAWING COVERS A PROPRIETARY ITEM AND IS THE PROPERTY OF MICRO SWITCH. A DIVISION OF HONEYWELL. THIS DRAWING IS NOT TO BE COPIED OR USED WITHOUT THE APPROVAL OF MICRO SWITCH.



THIRD ANGLE PROJECTION

CHARACTERISTICS

OPERATING FORCE	7 OZ MAX
RELEASE FORCE	1 OZ MIN
DIFFERENTIAL TRAVEL	.006 MAX
OVERTRAVEL	.003 MIN

ELECTRICAL DATA

CONTACT ARRANGEMENT

S P D T

28 VOLTS DC RATING	
INDUCTIVE	SEA LEVEL - 1/4 AMP 70,000 FT - 1/4 AMP
RESISTIVE	SEA LEVEL - 1/2 AMP 70,000 FT - 1/2 AMP

SCALE 2:1

DO NOT SCALE PRINT

UNLESS OTHERWISE SPECIFIED TOLERANCES ARE

ONE PLACE	(.0)	±.030
TWO PLACE	(.00)	±.015
THREE PLACE	(.000)	±.005
ANGLES		±

WEIGHT 5

REPLACES -

20HM23-1

CATALOG LISTING



1 ISSUE

CHECK

REVISIONS

CHECK

SAV

CHECK

03

PTC/CAD 20

DRAWN

3 JAN 03

LJK