



DS SERIES MULTI-PURPOSE POWER LINE FILTERS



INTRODUCTION

Two-stage filters are for susceptibility use when equipment impedance at radiation frequency is low.

COMPONENTS

PART NO.	C1 (uF)	C2 (uF)	L1 (uH)	L2 (mH)	Cy (pF)	R (Ω)
03DSCG5	0.22	0.22	30	1.0	5500	330K
06DSCG5			70	1.7		
10DSCG5			40	1.2		
20DSGG5	0.55		30	0.93		

MINIMUM INSERTION LOSS IN dB

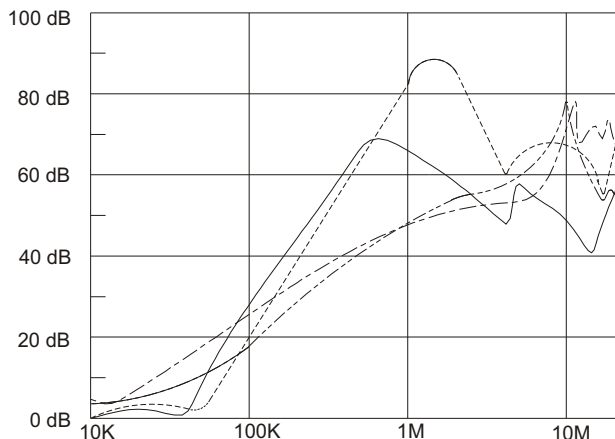
COMMON MODE (L-G) IN 50 OHM SYSTEM							
CURRENT RATING	FREQUENCY-MHz						
	.15	.50	1.0	5.0	10	30	
3A	12	25	30	45	60	35	
6A	25	30	30	35	50	45	
• 10A	15	20	25	40	45	40	
** 20A	12	20	30	35	40	40	

DIFFERENTIAL MODE (L-L) IN 50 OHM SYSTEM							
CURRENT RATING	.15	.50	1.0	5.0	10	30	
3A	20	50	60	45	45	45	
6A	30	25	40	40	40	40	
• 10A	25	50	50	45	45	45	
** 20A	25	60	60	50	50	45	

• VDE approved in 8A
 ** VDE approved in 16A

INSERTION LOSS (TYPICAL)

03DSCG5 ----- COMMON MODE ----- DIFF. MODE
 06DSCG5 ----- COMMON MODE ----- DIFF. MODE



SPECIFICATIONS

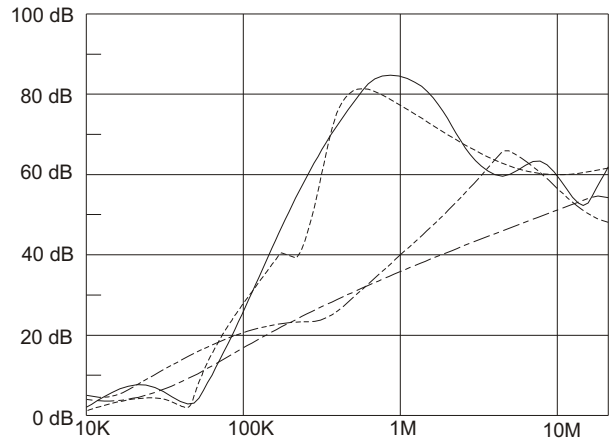
- Maximum leakage current each
 line-to-ground: @ 115VAC 60Hz: 0.45mA
 @ 250VAC 50Hz: 0.90mA
- Hipot rating (one minute)
 line-to-ground: 2250VDC
 line-to-line: 1450VDC
- Operating frequency: 50/60Hz
- Rated voltage: 115/250VAC

SERIES DIMENSIONS

PART NO.	DIMENSIONS IN INCHES/mm				
	A	B	C	D	E
03DSCG5	3.25 82.5	1.90 48.3	1.15 29.2	2.38 60.5	2.77 70.4
06DSCG5	3.75	2.06	1.54 39.1	2.94	3.34
10DSCG5	95.2	52.3		74.7	84.8
20DSGG5	5.25 130.5	3.40 86.4		3.75 95.3	4.14 105.1

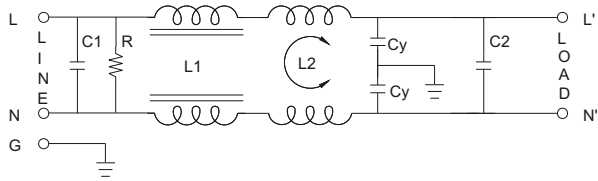
GENERAL PURPOSE TWO-STAGE FILTERS

10DSCG5 ----- COMMON MODE ----- DIFF. MODE
 20DSGG5 ----- COMMON MODE ----- DIFF. MODE

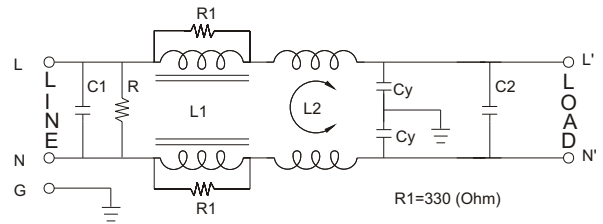


ELECTRICAL SCHEMATIC

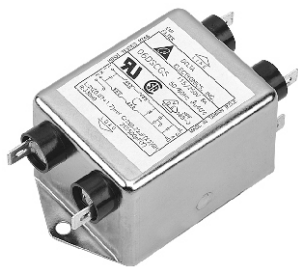
3A. 6A. 10A.



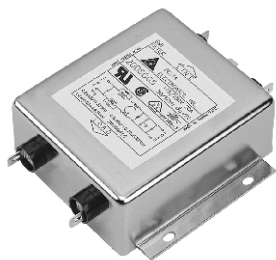
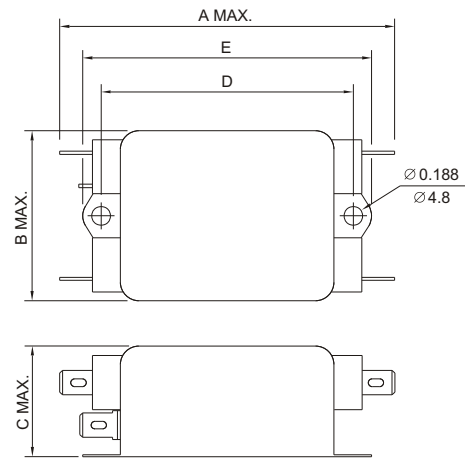
20A.



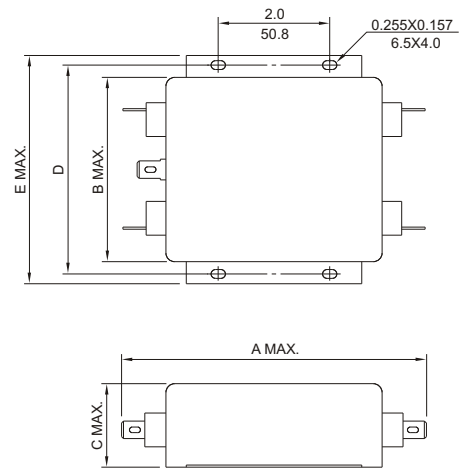
MECHANICAL CONSTRUCTION



CG5



GG5



UNIT: INCH
mm