

PLEASE CHECK WWW.MOLEX.COM FOR LATEST PART INFORMATION

Part Number: [2069962601](#)
Status: **Active**
Overview: CP Wire-to-Board and Wire-to-Wire Connector Systems
Description: CP-4.5 Receptacle Housing, 4.50mm Pitch, Dual Row, Polarized, Positive Lock, 6 Circuits, Blue

Documents:

| | |
|--|--|
| 3D Model | Packaging Specification 2069960000PK-000 (PDF) |
| 3D Model (PDF) | Datasheet (PDF) |
| Drawing (PDF) | RoHS Certificate of Compliance (PDF) |
| Product Specification 2069960000PS-002 (PDF) | |

General

| | |
|----------------|---|
| Product Family | Crimp Housings |
| Series | 206996 |
| Application | Power, Wire-to-Wire |
| Overview | CP Wire-to-Board and Wire-to-Wire Connector Systems |
| Product Name | CP-4.5 |
| UPC | 193264461998 |

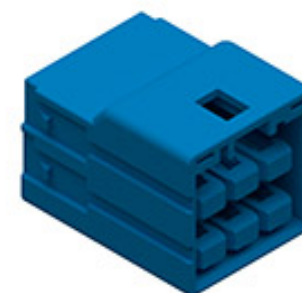
Physical

| | |
|-------------------------------|----------------|
| Circuits (maximum) | 6 |
| Color - Resin | Blue |
| Gender | Receptacle |
| Glow-Wire Capable | No |
| Keying to Mating Part | Yes |
| Lock to Mating Part | Yes |
| Material - Resin | Nylon |
| Net Weight | 3.090/g |
| Number of Rows | 2 |
| Packaging Type | Bag |
| Panel Mount | No |
| Pitch - Mating Interface | 4.50mm |
| Pitch - Termination Interface | 4.50mm |
| Polarized to Mating Part | Yes |
| Temperature Range - Operating | -40° to +105°C |

Material Info

Reference - Drawing Numbers

| | |
|-------------------------|------------------|
| Packaging Specification | 2069960000PK-000 |
| Product Specification | 2069960000PS-002 |
| Sales Drawing | 2069960000-001 |



Series image - Reference only

EU ELV

Not Relevant

EU RoHS

Compliant

REACH SVHC

Not Contained Per -
D(2020)4578-DC (25
June 2020)

Halogen-Free

Status

Low-Halogen

For more information, please visit [Contact US](#)

China ROHS

ELV

RoHS Phthalates

China RoHS

Green Image

Not Relevant

Not Contained

Search Parts in this Series

[206996 Series](#)

Mates With

CP-4.5 Plug Housing [2069972601](#)

Use With

Genderless Crimp Terminal 16-20 AWG
[2069998000](#)
Genderless Crimp
Terminal 22-26 AWG [2070008000](#)

CP-4.5 TPA [2069980200](#)