

**PLEASE CHECK WWW.MOLEX.COM FOR LATEST PART INFORMATION**

**Part Number:** [2069962601](#)  
**Status:** **Active**  
**Overview:** CP Wire-to-Board and Wire-to-Wire Connector Systems  
**Description:** CP-4.5 Receptacle Housing, 4.50mm Pitch, Dual Row, Polarized, Positive Lock, 6 Circuits, Blue

**Documents:**

<a href="#">3D Model</a>	<a href="#">Application Specification 2069960000ASKOR-000 (PDF)</a>
<a href="#">3D Model (PDF)</a>	<a href="#">Packaging Specification 2069960000PK-000 (PDF)</a>
<a href="#">Drawing (PDF)</a>	<a href="#">Datasheet (PDF)</a>
<a href="#">Product Specification 2069960000PS-002 (PDF)</a>	<a href="#">RoHS Certificate of Compliance (PDF)</a>
<a href="#">Application Specification 2069960000ASENG-000 (PDF)</a>	

**General**

Product Family	Crimp Housings
Series	<a href="#">206996</a>
Application	Power, Wire-to-Wire
Overview	<a href="#">CP Wire-to-Board and Wire-to-Wire Connector Systems</a>
Product Name	CP-4.5
UPC	193264461998

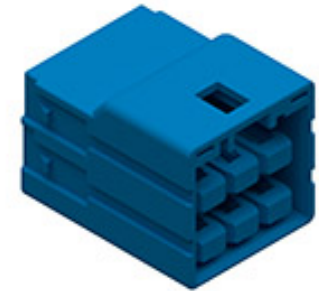
**Physical**

Circuits (maximum)	6
Color - Resin	Blue
Gender	Receptacle
Glow-Wire Capable	Yes
Keying to Mating Part	Yes
Lock to Mating Part	Yes
Material - Resin	Nylon
Net Weight	3.090/g
Number of Rows	2
Packaging Type	Bag
Panel Mount	No
Pitch - Mating Interface	4.50mm
Pitch - Termination Interface	4.50mm
Polarized to Mating Part	Yes
Temperature Range - Operating	-40° to +120°C

**Material Info**

**Reference - Drawing Numbers**

Application Specification	2069960000AS_ENG-000, 2069960000AS_KOR-000
Packaging Specification	2069960000PK-000
Product Specification	2069960000PS-002
Sales Drawing	2069960000-001



*Series image - Reference only*

**EU ELV**

**Not Relevant**

**EU RoHS**

**Compliant**

**REACH SVHC**

Not Contained Per -  
D(2020)9139-DC (19  
Jan 2021)

**Halogen-Free**

**Status**

**Low-Halogen**

For more information, please visit [Contact US](#)

China ROHS

ELV

RoHS Phthalates

**China RoHS**

Green Image

Not Relevant

Not Contained

**Search Parts in this Series**

[206996](#) Series

**Mates With**

CP-4.5 Plug Housing [2069972601](#)

**Use With**

Genderless Crimp Terminal 16-20 AWG  
[2069998000](#) <br>Genderless Crimp  
Terminal 22-26 AWG [2070008000](#)  
<br>CP-4.5 TPA [2069980200](#)