



MICRO SWITCH

FREEPORT, ILLINOIS, U.S.A.
A DIVISION OF HONEYWELL

FED. MFG. CODE 91929

SWITCH-BASIC

CATALOG LISTING

1SM1-T

DRAWING NUMBER
1SM1-T

ISSUE
M

10

PAGE 1 OF 1
RELEASE NO.

REPLACES

CHECK

CHECK

REVISIONS

A	CO15200
N B F	17 AUG 65
B	CO77766
DLT	12 JUL 94
C	CO-82802-E
DLT	18 MAR 97
D	CO-95172
J J A	18 JUNE 99

CHECK

CHECK

CHECK

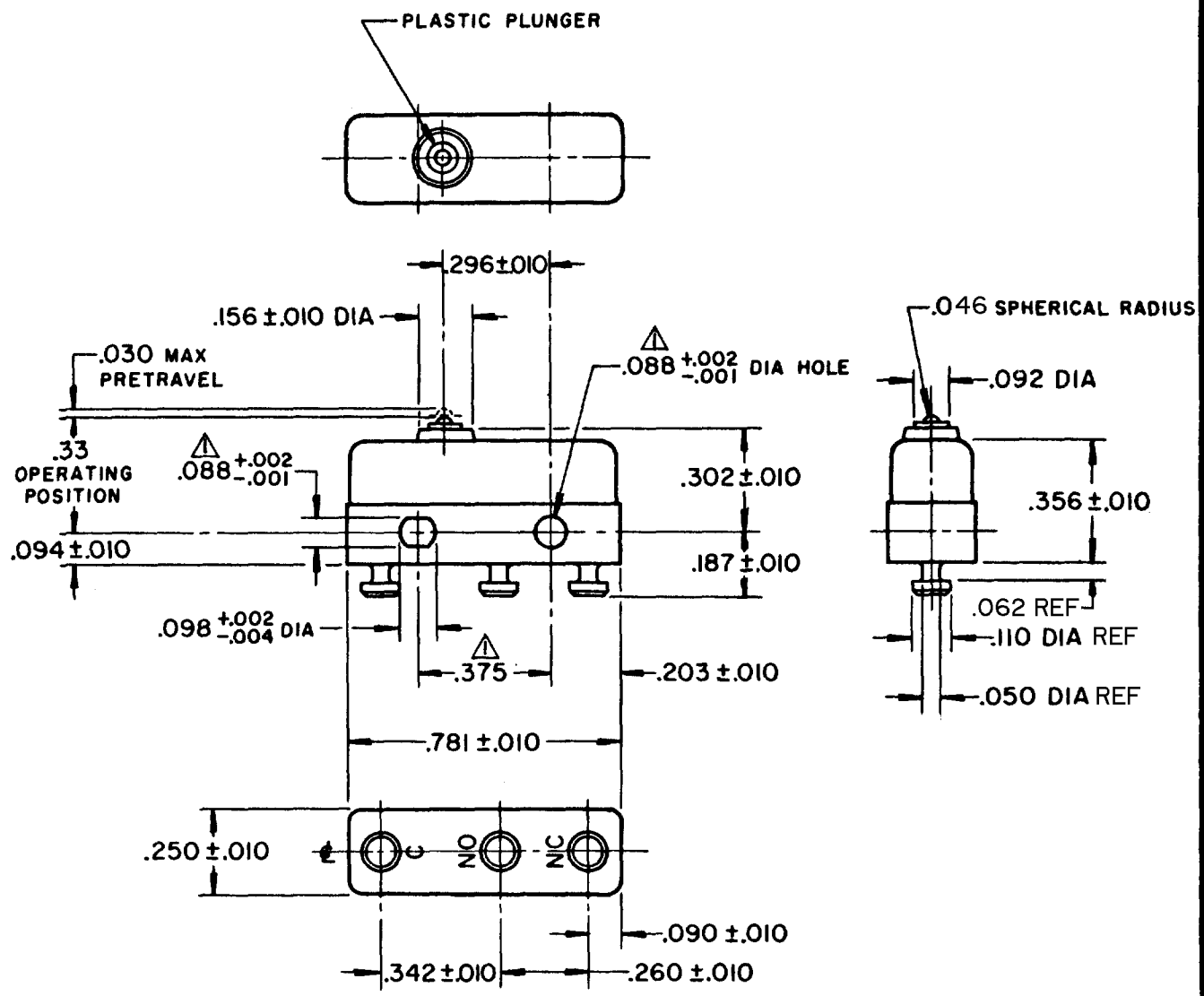
CHECK

CHECK

CHECK

CHECK

CHECK



NOTE-
 ▲-MOUNTING HOLES WILL ACCEPT PINS OR SCREWS
 OF .087 MAX DIA ON .375 ±.002 CENTERS
 2-TERMINALS ARE PLATED FOR SOLDERING

THIS DRAWING COVERS A PROPRIETARY ITEM AND IS THE PROPERTY OF MICRO SWITCH, A DIVISION OF HONEYWELL. THIS DRAWING IS NOT TO BE COPIED OR USED WITHOUT THE APPROVAL OF MICRO SWITCH.

CHARACTERISTICS	ELECTRICAL DATA	SCALE 2 TO 1
OPERATING FORCE — — — — 3 - 5 OZ	CONTACT ARRANGEMENT S P D T	DO NOT SCALE PRINT
RELEASE FORCE — — — — 1 OZ MIN	30 VOLTS DC RATING	UNLESS OTHERWISE NOTED
DIFFERENTIAL TRAVEL — — — .004 MAX	INDUCTIVE — — — SEA LEVEL — — — 3 AMP	DIMENSIONS ARE IN INCHES
OVERTRAVEL — — — — .005 MIN	50,000 FT — — — 2.5 AMP	TOLERANCES ARE:
	RESISTIVE — — — SEA LEVEL — — — 5 AMP	ONE PLACE (.0) ±.030
	50,000 FT — — — 5 AMP	TWO PLACE (.00) ±.015
	MAXIMUM INRUSH — — — 24 AMP	THREE PLACE (.000) ±.005
	L4	ANGLES ±
	5A 250 VAC ~	WEIGHT .006 LB MAX

FORMTEK
FC-50376

DRAWN

CHECK

CHECK

CHECK

CHECK

CHECK

CHECK

CHECK

CHECK