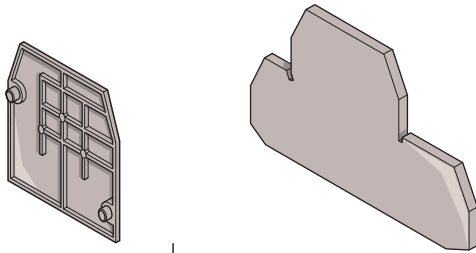


# FE End sections

When assembled on the mounting track, terminal blocks cover each other's open side. At the end of an assembly, or when the size of the blocks change in an assembly, an end section must be used to isolate the open side of the block. End sections are available for all terminal blocks and are sometimes available in colors. Colored end sections can offer an easy and economical way to separate circuits for identification.

## Snap-on end sections for blocks

End sections below are aligned with the profile of the block and snap on the open side of the block.

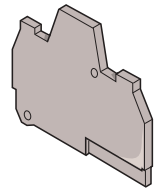


| Type                 | Thickness    | Color       | P/N |
|----------------------|--------------|-------------|-----|
| <b>Blocks</b>        |              |             |     |
| <b>FEM6</b>          | 2,8 mm .110" |             |     |
| MA 2,5/5 except D    | grey         | 0118 368.16 |     |
| M 4/6 except D and G | white        | 0103 312.20 |     |
| M 4/6...             | blue         | 0128 368.10 |     |
| M 4/6.H and M1       | yellow       | 0103 062.21 |     |
| M 1,5/6.HH and ADV   | green        | 0103 125.15 |     |
| MTC 6                | orange       | 0103 126.16 |     |
| M 6/8 and M 10/10    | black        | 0107 005.25 |     |
| <b>FEMS6</b>         | 3 mm .118"   |             |     |
| MS 4/6...            | grey         | 0113 885.01 |     |
|                      | blue         | 0123 885.03 |     |
|                      | yellow       | 0103 300.11 |     |
|                      | orange       | 0103 292.25 |     |
| <b>FEMS8</b>         | 3 mm .118"   |             |     |
| MS 6/8...            | grey         | 0114 195.06 |     |
|                      | blue         | 0124 195.00 |     |
|                      | yellow       | 0103 301.06 |     |
|                      | orange       | 0103 302.07 |     |
| <b>FEM3A</b>         | 3 mm .118"   |             |     |
| M 4/6.3A             | grey         | 0116 576.15 |     |
|                      | blue         | 0126 576.17 |     |
|                      | yellow       | 0103 862.20 |     |
| <b>FEM4A</b>         | 3 mm .118"   |             |     |
| M 4/6.4A             | grey         | 0116 629.22 |     |
| M 4/6.SNBT.4A        | blue         | 0126 629.24 |     |
|                      | yellow       | 0103 863.21 |     |
| <b>FEM6D</b>         | 1 mm .039"   |             |     |
| MA 2,5/5.D           | grey         | 0118 499.23 |     |
| M 4/6.D              | blue         | 0128 499.25 |     |
| M 4/6.D2.H           |              |             |     |
| M 1,5/6.D2.HH        |              |             |     |
| M 4/6.D2.M           |              |             |     |
| <b>FEM61D</b>        | 3 mm .118"   |             |     |
| M 4/6.D2.G and 2G    | grey         | 0114 815.03 |     |
| <b>FEM62</b>         | 3 mm .118"   |             |     |
| M 4/6.SB             | grey         | 0114 994.07 |     |
| M 4/6.SNB            | orange       | 0103 612.25 |     |
| <b>FEM62D</b>        | 3 mm .118"   |             |     |
| MS 4/6.D2.2G         | grey         | 0114 429.10 |     |
| <b>FEM6G</b>         | 2,5 mm .098" |             |     |
| M 2,5/6.2G           | grey         | 0113 027.07 |     |
| M 4/6.G and 2G       | blue         | 0123 027.01 |     |
| <b>FEM8</b>          | 3 mm .118"   |             |     |
| M 6/8.S and SB       | grey         | 0113 373.26 |     |
| M 6/8.SN             | orange       | 0103 230.02 |     |
| <b>FEM8D2S</b>       | 1,5 mm .059" |             |     |
| M 4/8.D2.SF          | grey         | 0116 913.07 |     |
| <b>FEM8S</b>         | 1,5 mm .059" |             |     |
| M 4/8.SF             | grey         | 0116 951.15 |     |
| M 4/8.SN             | orange       | 0103 923.15 |     |
| M 4/8                |              |             |     |
| <b>FEM9</b>          | 3 mm .118"   |             |     |
| M 6/9.EE             | grey         | 0113 067.17 |     |
| <b>FEM12</b>         | 3 mm .118"   |             |     |
| M 16/12              | grey         | 0118 618.01 |     |
|                      | blue         | 0128 618.03 |     |
|                      | yellow       | 0103 065.24 |     |

| Type          | Thickness    | Color       | P/N |
|---------------|--------------|-------------|-----|
| <b>Blocks</b> |              |             |     |
| <b>FEM12F</b> | 3 mm .118"   |             |     |
| M 6/12.FF     | white        | 0114 023.04 |     |
| <b>FEM12N</b> | 1 mm .039"   |             |     |
| M 16/12.NT    | blue         | 0128 616.21 |     |
| <b>FEM12S</b> | 3 mm .118"   |             |     |
| MB 10/12.SF   | grey         | 0117 628.22 |     |
| <b>FEM13U</b> | 1,5 mm .059" |             |     |
| ML 10/13.SF   | black        | 0199 635.24 |     |
| ML 10/13.SN   |              |             |     |
| MU 10/13.SF   |              |             |     |
| <b>FEM13F</b> | 1 mm .039"   |             |     |
| M 6/13.FF     | grey         | 0116 977.17 |     |
| <b>FEM16</b>  | 3 mm .118"   |             |     |
| M 35/16       | grey         | 0118 233.27 |     |
|               | blue         | 0128 233.21 |     |
|               | yellow       | 0103 061.20 |     |
| <b>FEM22</b>  | 3 mm .118"   |             |     |
| M 70/22       | grey         | 0113 065.15 |     |
|               | yellow       | 0103 881.14 |     |
| <b>FEMG</b>   | 1,5 mm .059" |             |     |
| M 4/6.3G      | grey         | 0114 144.12 |     |
| M 4/6.5.3G    |              |             |     |
| M 2,5/6.4G    |              |             |     |
| M 2,5/6.5.4G  |              |             |     |
| <b>FEMR10</b> | 2,5 mm .098" |             |     |
| M 10/10.RS    | grey         | 0114 434.05 |     |
| <b>FEMT1</b>  | 2,8 mm .110" |             |     |
| M 6/8.STP     | grey         | 0113 137.02 |     |
| <b>FEMT2</b>  | 1 mm .039"   |             |     |
| M 6/8.ST      | grey         | 0113 629.27 |     |
| <b>FEMT3</b>  | 2,5 mm .098" |             |     |
| M 4/6.ST      | grey         | 0114 328.22 |     |
| <b>FEMT4</b>  | 3 mm .118"   |             |     |
| M 6/8.STA     | grey         | 0114 778.05 |     |
| <b>FEMSTA</b> | 3 mm .118"   |             |     |
| M 6/8.STA     | grey         | 0116 979.21 |     |
| <b>FEMR8</b>  | 2,8 mm .110" |             |     |
| M 6/8.RS      | grey         | 0116 987.02 |     |
| <b>FEMR8T</b> | 2,8 mm .110" |             |     |
| M 6/8.STP.RS  | grey         | 0116 991.06 |     |
| <b>FEM8D1</b> | 1 mm .039"   |             |     |
| M 6/8.D...    | grey         | 0116 656.25 |     |
| <b>FEM8D2</b> | 4 mm .157"   |             |     |
| M 6/8.D...    | grey         | 0116 657.26 |     |
| <b>FEM12N</b> | 1 mm .039"   |             |     |
| M 16/12.NT    | blue         | 0128 616.21 |     |
| <b>FEMS6D</b> | 1 mm .039"   |             |     |
| M 4/6.D2.SNBT | grey         | 0116 591.05 |     |
| <b>FEMT5</b>  | 2,5 mm .098" |             |     |
| M 10/10.St.Sn | grey         | 0116 781.13 |     |
| <b>FED3E</b>  | 3 mm .118"   |             |     |
| D 2,5/6.D     | grey         | 0116 771.20 |     |
| <b>FED6</b>   | 1 mm .039"   |             |     |
| D 4/6...      | grey         | 0116 964.12 |     |
| <b>FEDA6</b>  | 1 mm .039"   |             |     |
| D 4/6.A...    | grey         | 0116 965.13 |     |

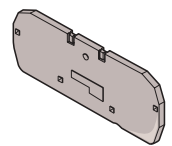
## End sections V0

| Type              | Thickness    | Color       | P/N |
|-------------------|--------------|-------------|-----|
| <b>Blocks</b>     |              |             |     |
| <b>FEM3AP V0</b>  | 3 mm .118"   |             |     |
| M 4/6.3A.P V0     | yellow       | 0199 876.26 |     |
| <b>FEM4AP V0</b>  | 3 mm .118"   |             |     |
| M 4/6.4A.P V0     | yellow       | 0199 879.01 |     |
| <b>FEM6 V0</b>    | 2,5 mm .098" |             |     |
| M 4/6 V0          | beige        | 0198 368.17 |     |
| M 6/8 V0          | blue         | 0199 302.07 |     |
| M 10/10 V0        | yellow       | 0199 305.02 |     |
| MA 2,5/5 V0       |              |             |     |
| <b>FEM3A V0</b>   | 3 mm .118"   |             |     |
| M 4/6.3A V0       | beige        | 0196 576.16 |     |
| <b>FEM4A V0</b>   | 3 mm .118"   |             |     |
| M 4/6.4A V0       | beige        | 0196 629.23 |     |
| M 4/6.SNBT.4A V0  |              |             |     |
| <b>FEM62 V0</b>   | 3 mm .118"   |             |     |
| M 4/6.SB V0       | beige        | 0194 994.00 |     |
| <b>FEM6D V0</b>   | 1 mm .039"   |             |     |
| M 4/6.D V0        | beige        | 0198 499.24 |     |
| MA 2,5/5.D2 V0    |              |             |     |
| <b>FEM6G V0</b>   | 2,5 mm .098" |             |     |
| M 2,5/6.2G.2G V0  | beige        | 0193 027.00 |     |
| M 4/6.2G V0       |              |             |     |
| <b>FEM8 V0</b>    | 3 mm .118"   |             |     |
| M 6/8.S V0        | beige        | 0193 373.27 |     |
| M 6/8.SN V0       |              |             |     |
| <b>FEMT3 V0</b>   | 2,5 mm .098" |             |     |
| M 4/6.ST          | beige        | 0194 328.23 |     |
| <b>FEM8D2S V0</b> |              |             |     |
| M 4/8.D2.SF       | beige        | 0196 913.00 |     |
| <b>FEMR8 V0</b>   | 2,8 mm .110" |             |     |
| M 6/8.RS V0       | beige        | 0196 987.03 |     |
| <b>FEMR8T V0</b>  | 2,8 mm .110" |             |     |
| M 6/8.STP.RS V0   | beige        | 0196 991.07 |     |
| <b>FEMR10 V0</b>  |              |             |     |
| M 10/10.RS V0     | beige        | 0194 434.06 |     |
| <b>FEM8S V0</b>   | 1,5 mm .059" |             |     |
| M 4/6.SF V0       | beige        | 0196 951.16 |     |
| M 4/6.SN V0       |              |             |     |
| <b>FEM12 V0</b>   | 3 mm .118"   |             |     |
| M 16/12 V0        | beige        | 0198 618.02 |     |
| M 16/12.N V0      | blue         | 0199 303.00 |     |
| <b>FEM12F V0</b>  | 3 mm .118"   |             |     |
| M 6/12.FF V0      | beige        | 0114 023.04 |     |
| <b>FEM13F V0</b>  | 1 mm .039"   |             |     |
| M 6/13.FF V0      | beige        | 0196 977.17 |     |
| <b>FEM16 V0</b>   | 3 mm .118"   |             |     |
| M 35/16 V0        | beige        | 0198 233.20 |     |
| M 35/16.N V0      | blue         | 0199 304.01 |     |
| <b>FEM22 V0</b>   | 3 mm .118"   |             |     |
| M 70/22 V0        | beige        | 0193 065.16 |     |
| <b>FEMT2 V0</b>   | 1 mm .039"   |             |     |
| M 6/8.ST V0       | beige        | 0193 629.20 |     |
| <b>FEMS6 V0</b>   | 3 mm .118"   |             |     |
| MS 4/6            | beige        | 0193 885.02 |     |
| <b>FEM8D1 V0</b>  | 1 mm .039"   |             |     |
| M 6/8.D2          | beige        | 0196 656.26 |     |
| <b>FEMT5 V0</b>   | 2,5 mm .098" |             |     |
| M 10/10.St.Sn     | beige        | 0196 781.14 |     |



## Specific end sections for A.D.O. terminal blocks

| Type               | Thickness    | Color       | P/N |
|--------------------|--------------|-------------|-----|
| <b>Blocks</b>      |              |             |     |
| <b>FEDAD1</b>      | 3 mm .118"   |             |     |
| D 2,5/5...ADO      | grey         | 0199 336.20 |     |
| D 4/6...ADO        | grey         | 0199 339.03 |     |
| D 6/8...ADO        | yellow       |             |     |
| D 6/8...ADO3       |              |             |     |
| <b>FEDAD4</b>      | 2 mm .079"   |             |     |
| D 4/6.S...ADO      | grey         | 0199 352.00 |     |
| D 4/8.S...ADO      |              |             |     |
| <b>FEDAD5</b>      | 2 mm .079"   |             |     |
| D 1,5/6.S...ADO    | grey         | 0199 354.02 |     |
| D 2,5/8.S...ADO    |              |             |     |
| <b>FEDAD6</b>      | 1,5 mm .059" |             |     |
| D 4/8.SF...ADO...  | grey         | 0199 356.04 |     |
| D 4/8.SNN...ADO... |              |             |     |
| <b>FEDAD7</b>      | 1,5 mm .059" |             |     |
| D 1,5/8.S...ADO    | grey         | 0199 382.27 |     |
| D 2,5/8.S...ADO2   |              |             |     |
| <b>FEMAD3</b>      | 3 mm .118"   |             |     |
| D 1/5...ADO        | grey         | 0199 341.05 |     |
| D 1,5/6...ADO      | yellow       | 0199 343.07 |     |
| D 2,5/8...ADO      |              |             |     |
| D 4/8...ADO        |              |             |     |
| <b>FED2AD1</b>     | 5 mm .196"   |             |     |
| D 4/6.D2.ADO       | grey         | 0199 417.12 |     |
| D 4/6.D2.ADO.1     |              |             |     |
| <b>FED2AD2</b>     | 5 mm .196"   |             |     |
| D 1,5/6.D2.ADO     | grey         | 0199 476.25 |     |



## Specific end sections for spring connection terminal blocks

| Type                | Thickness    | Color       | P/N |
|---------------------|--------------|-------------|-----|
| <b>Blocks</b>       |              |             |     |
| <b>FED1.L V0</b>    | 1,5 mm .059" |             |     |
| DR 2,5/5...2L       | grey         | 0291 301.02 |     |
| DR 2,5/10...4L      | orange       | 0291 302.03 |     |
| DS 2,5/5...2L       |              |             |     |
| DS 2,5/10...4L      |              |             |     |
| <b>FED5.2L V0</b>   | 2,5 mm .098" |             |     |
| D 2,5/5...2L        | grey         | 0291 061.24 |     |
| D 4/6...2L          | orange       | 0291 062.25 |     |
| <b>FED5.3L V0</b>   | 2,5 mm .098" |             |     |
| D 2,5/5...3L        | grey         | 0291 051.22 |     |
|                     | orange       | 0291 052.23 |     |
| <b>FED5.4L V0</b>   | 2,5 mm .098" |             |     |
| D 2,5/5...4L        | grey         | 0291 041.20 |     |
| D 2,5/5.2L.2L       | orange       | 0291 042.21 |     |
| <b>FED8.2L V0</b>   | 2,5 mm .098" |             |     |
| D 6/8...2L          | grey         | 0291 161.25 |     |
|                     | orange       | 0291 162.26 |     |
| <b>FED8SF.2L V0</b> | 3 mm .118"   |             |     |
| D 2,5/8.S...2L      | grey         | 0291 131.17 |     |
|                     | orange       | 0291 132.10 |     |