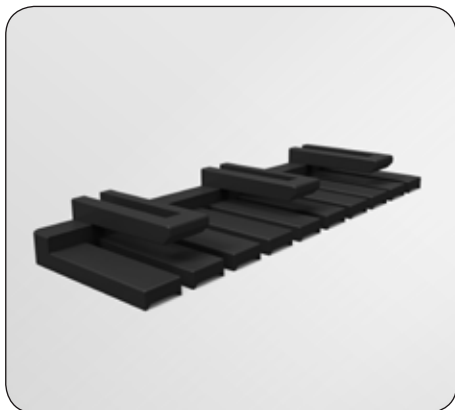




EP 2.5 6-Posn Receptacle Housing with Latch and Tabs, part number 1969442-6



EP 2.5 10-Posn TPA Retainer, Part Number 1-1969443-0

Introducing EP 2.5 Connector Series

Economy Power 2.5 (EP 2.5) is a new type of single-row crimp connector system. EP 2.5 is comprised of new plug housings, contacts, and headers, based on a 2.5 mm centerline (0.098" pitch), which makes it a very compact solution. The newly designed contact retainers provide Terminal Position Assurance (TPA). The inserted TPA retainers help prevent the contacts from backing out in applications with random vibration and help ensure full contact insertion within the housing.

EP 2.5 connector halves are available with 2 to 20 positions. This high number can be utilized to integrate up to 20 discrete wires with 26 to 20 AWG size into a single PC board section of roughly 52mm (2") length. As board space is increasingly at a premium, the EP 2.5 interconnection system offers ideal conditions for contacting densely packed circuit boards.

EP 2.5 housings and contacts were designed to help the workers on the shop floor. The low-insertion force terminals, for instance, have an asymmetrical shape which means that they can only be loaded one-way in the housing cavity.

The EP 2.5 connector system provides both vertical and right angle headers, optional TPA retainers, and resin materials to meet your glow wire requirements. In addition, EP 2.5 connectors are intermateable with similar products in the market to facilitate simple retrofitting.

KEY FEATURES

- 2.5mm (0.098") Centerline Pitch
- 2-20 positions for discrete wires AWG 26-22
- Voltage up to 250 VAC
- Current up to 4.5 A
- Housing locking latch
- Polarization tabs
- Asymmetrical terminals can only be loaded one way
- Low insertion force terminals
- Anti-Fretting contact lubricant

APPLICATIONS

- Household appliances
- HVAC
- Industrial machinery (e.g. control boards)

SPECIFICATIONS

- Product specification: 108-2418
- Application specification: 114-13315

SAMPLES NOW AVAILABLE

ELECTRICAL

- Voltage rating: 250 VAC
- Current rating: 4.5 A

MECHANICAL

- Positions: 2 to 20 (single row)
- Wire size: 26 to 20 AWG discrete wire
- Centerline Pitch: 2.5 mm (0.098")
- Operating temperature: -55 to 105 °C

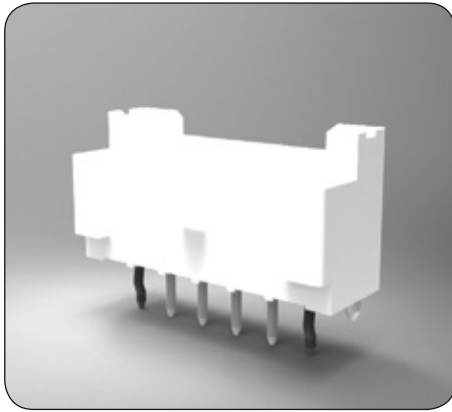
MATERIALS

- Housings: UL 94V-0 rated nylon
- Contacts: Tin-plated Phos Bronze
- Colored housings available upon request
- Glow wire material option available

STANDARDS

- UL recognized: E28476
- CSA Certified: E28476





EP 2.5 6-Posn Vertical Shrouded Header with Boss, Part Number 2132230-6



EP 2.5 Phos Bronze Pre-Tin Contact 22-26 AWG, part number 2110989-1

APPLICATION TOOLING

Part number	Description
1530232-[]	HDI Quick Change Miniature Applicator
1725950-[]	AMP 3K Press
1725900-[]	AMP 5K Press
354500-[]	AMP-O-LECTRIC Model "G" Terminating Machine
528324-[]	Komax Gamma 333 PC

EP 2.5 Receptacle TPA Housing with Latch and Tabs - TPA - Terminals

Posn	UL 94V-0	Glow Wire*	TPA	22-26 AWG Terminal	20-24 AWG Terminal*
2	1969442-2	1744417-2	1969443-2	2110989-1	1744423-1
3	1969442-3	1744417-3	1969443-3	2110989-1	1744423-1
4	1969442-4	1744417-4	1969443-4	2110989-1	1744423-1
5	1969442-5	1744417-5	1969443-5	2110989-1	1744423-1
6	1969442-6	1744417-6	1969443-6	2110989-1	1744423-1
7	1969442-7	1744417-7	1969443-7	2110989-1	1744423-1
8	1969442-8	1744417-8	1969443-8	2110989-1	1744423-1
9	1969442-9	1744417-9	1969443-9	2110989-1	1744423-1
10	1-1969442-0	1-1744417-0	1-1969443-0	2110989-1	1744423-1
11	1-1969442-1	1-1744417-1	1-1969443-1	2110989-1	1744423-1
12	1-1969442-2	1-1744417-2	1-1969443-2	2110989-1	1744423-1
13	1-1969442-3	1-1744417-3	1-1969443-3	2110989-1	1744423-1
14	1-1969442-4	1-1744417-4	1-1969443-4	2110989-1	1744423-1
15	1-1969442-5	1-1744417-5	1-1969443-5	2110989-1	1744423-1
16	1-1969442-6	1-1744417-6	1-1969443-6	2110989-1	1744423-1
17	1-1969442-7	1-1744417-7	1-1969443-7	2110989-1	1744423-1
18	1-1969442-8	1-1744417-8	1-1969443-8	2110989-1	1744423-1
19	1-1969442-9	1-1744417-9	1-1969443-9	2110989-1	1744423-1
20	2-1969442-0	2-1744417-0	2-1969443-0	2110989-1	1744423-1

EP 2.5 Shrouded Headers

Posn	Vertical UL 94V0 w/Boss	Vertical UL 94V0 w/o Boss	Vertical Glow Wire w/Boss*	Vertical Glow Wire w/o Boss*	Right Angle UL 94V-0**	Right Angle Glow Wire**
2	2132230-2	2132415-2	1744418-2	1744439-2	1744426-2	1744446-2
3	2132230-3	2132415-3	1744418-3	1744439-3	1744426-3	1744446-3
4	2132230-4	2132415-4	1744418-4	1744439-4	1744426-4	1744446-4
5	2132230-5	2132415-5	1744418-5	1744439-5	1744426-5	1744446-5
6	2132230-6	2132415-6	1744418-6	1744439-6	1744426-6	1744446-6
7	2132230-7	2132415-7	1744418-7	1744439-7	1744426-7	1744446-7
8	2132230-8	2132415-8	1744418-8	1744439-8	1744426-8	1744446-8
9	2132230-9	2132415-9	1744418-9	1744439-9	1744426-9	1744446-9
10	1-2132230-0	1-2132415-0	1-1744418-0	1-1744439-0	1-1744426-0	1-1744446-0
11	1-2132230-1	1-2132415-1	1-1744418-1	1-1744439-1	1-1744426-1	1-1744446-1
12	1-2132230-2	1-2132415-2	1-1744418-2	1-1744439-2	1-1744426-2	1-1744446-2
13	1-2132230-3	1-2132415-3	1-1744418-3	1-1744439-3	1-1744426-3	1-1744446-3
14	1-2132230-4	1-2132415-4	1-1744418-4	1-1744439-4	1-1744426-4	1-1744446-4
15	1-2132230-5	1-2132415-5	1-1744418-5	1-1744439-5	1-1744426-5	1-1744446-5
16	1-2132230-6	1-2132415-6	1-1744418-6	1-1744439-6	1-1744426-6	1-1744446-6
17	1-2132230-7	1-2132415-7	1-1744418-7	1-1744439-7	1-1744426-7	1-1744446-7
18	1-2132230-8	1-2132415-8	1-1744418-8	1-1744439-8	1-1744426-8	1-1744446-8
19	1-2132230-9	1-2132415-9	1-1744418-9	1-1744439-9	1-1744426-9	1-1744446-9
20	2--2132230-0	2-2132415-0	2-1744418-0	2-1744439-0	2-1744426-0	2-1744446-0

* Available May 2012 ** Available September 2012

While TE has made every reasonable effort to ensure the accuracy of the information in this flyer, TE does not guarantee that it is error-free, nor does TE make any other representation, warranty or guarantee that the information is accurate, correct, reliable or current. TE reserves the right to make any adjustments to the information contained herein at any time without notice. TE expressly disclaims all implied warranties regarding the information contained herein, including, but not limited to, any implied warranties of merchantability or fitness for a particular purpose. The dimensions in this flyer are for reference purposes only and are subject to change without notice. Specifications are subject to change without notice. Consult TE for the latest dimensions and design specifications.

