

Han INOX 3A-SMH-M20

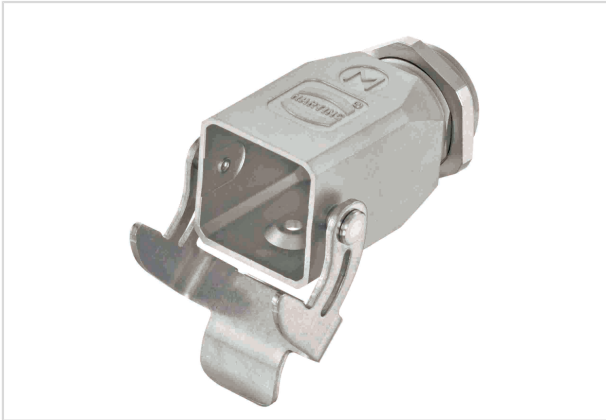


Image is for illustration purposes only. Please refer to product description.

Part number	19 44 003 1150
Specification	Han INOX 3A-SMH-M20
HARTING eCatalogue	https://b2b.harting.com/19440031150

Identification

Category	Hoods/Housings
Series of hoods/housings	Han-INOX®
Type of hood/housing	Screw mounted housing

Version

Locking type	Single locking lever
Size	3 A
Version	Top entry
Cable entry	1x M20
Field of application	Hoods/housings for harsh environments
Pack contents	With seal screw 1x M20 stainless steel screw nut

Technical characteristics

Limiting temperature	-40 ... +125 °C
Degree of protection acc. to IEC 60529	IP65 IP67
Type rating acc. to UL 50 / UL 50E	4 4X 12

Material properties

Material (hood/housing)	Stainless steel
Surface (hood/housing)	Uncoated



Pushing Performance

Material properties

Colour (hood/housing)	Unpainted
Material (locking)	Stainless steel
RoHS	compliant
ELV status	compliant
China RoHS	e
REACH Annex XVII substances	No
REACH ANNEX XIV substances	No
REACH SVHC substances	No

Specifications and approvals

Approvals	DNV GL
UL / CSA	UL 1977 ECBT2.E235076 CSA-C22.2 No. 182.3 ECBT8.E235076
CE	Yes

Commercial data

Packaging size	1
Net weight	64.5 g
Country of origin	Germany
European customs tariff number	85389099
eCl@ss	27440202 Shell for industrial connectors