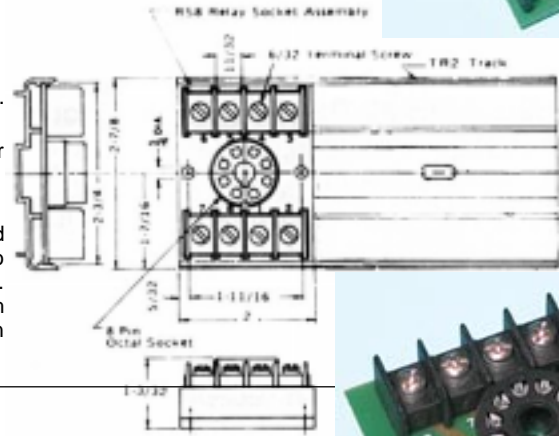


RS SERIES

RS8 and RS8SC 8-PIN OCTAL-TYPE SOCKET ASSEMBLIES

SPECIFICATIONS

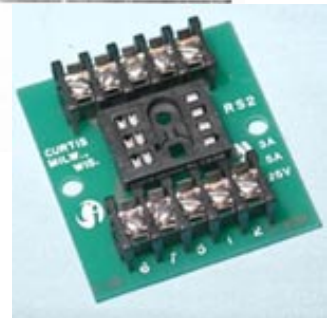
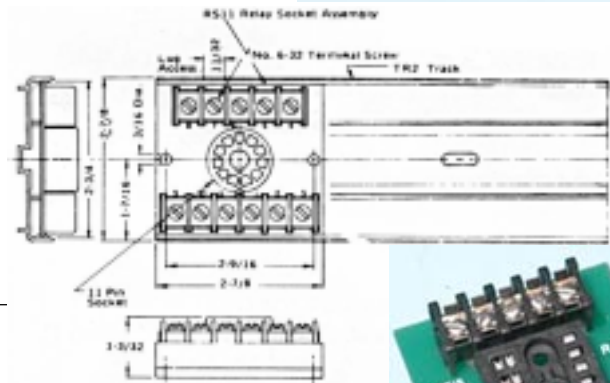
- Rating: 10 amps, 250 volts.
 Track: TR2
 48" length holds up to 24 sockets.
 Terminals: RS8 – No. 6-32 screws, 7/16" C. to C. spacing.
 RS8SC – No. 6-32 screws with captivated wire clamp, 7/16" C. to C. spacing (no lugs required).
 Wire: RS8 – up to No. 12AWG (lugs are recommended on wire larger than No. 16AWG).
 RS8SC – up to No. 12AWG.
 Sockets: 8-pin octal receptacle to accept standard 2PDT relays and timers. Recessed slotted center post chamber allows relays to be rocked out without danger of damaging relay center posts. PC board has center post clearance hole to allow relays with screws in center post. Phosphor bronze contacts for better pin contact and retention.



RS11 and RS11SC 11-PIN OCTAL-TYPE SOCKET ASSEMBLIES

SPECIFICATIONS

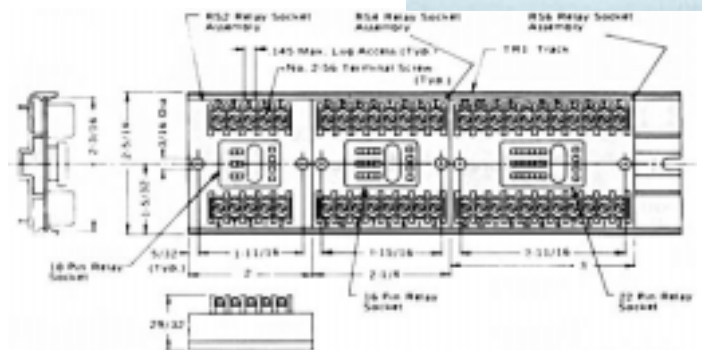
- Rating: 10 amps, 250 volts.
 Track: TR2
 48" length holds up to 16 sockets.
 Terminals: RS11 – No. 6-32 screws, 7/16" C. to C. spacing.
 RS11SC – captivated wire clamp, 7/16" C. to C.
 Wire: RS11 – up to No. 12AWG. (lugs are recommended on wire larger than 16AWG).
 RS11SC – up to two No. 12AWG.
 Sockets: 11-pin octal receptacle to accept 3PDT relays. Refer to RS8 socket for features.



RS2, RS4 and RS6 10, 16, and 22-PIN SQUARE-BASE MINIATURE RELAY-TYPE SOCKET ASSEMBLIES

SPECIFICATIONS

- Rating: 5 amps, 125 volts, (UL rated 3 amps, 125 volts)
 Track: TR1
 48" length holds up to 24 RS2 sockets, 21 RS4 sockets and 16 RS6 sockets.
 Terminals: No. 2-56 screw with clamp – 1/4" C. to C. spacing.
 Wire: Up to No. 16AWG.
 Sockets: RS2 – 10-pin receptacle to accept miniature 2PDT relays with latching coils.
 RS4 – 16-pin receptacle to accept miniature 4PDT relays with latching coils.
 RS6 – 22-pin receptacle to accept miniature 6PDT relays with latching coils.



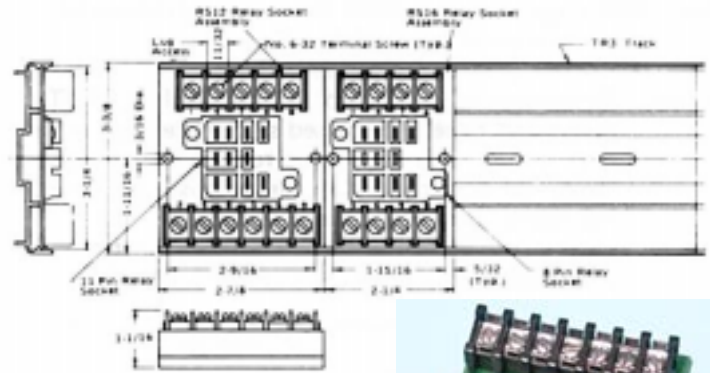
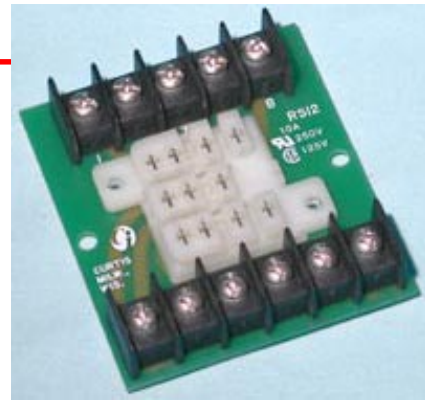
CURTIS RS SERIES

RS12, RS12SC, RS16 and RS16SC

8 and 11-PIN UNITIZED OCTAL-TYPE SOCKET ASSEMBLIES

SPECIFICATIONS

- Rating: 10 amps, 250 volts.
 Track: TR3
 48" length holds up to 16 RS12 or RS12SC sockets.
 48" length holds up to 22 RS16 or RS16SC sockets.
 Terminals: RS12 and RS16 – No. 6-32 screws, 7/16" C. to C. spacing.
 RS12SC and RS16SC – captivated wire clamp 7/16" C. to C. spacing.
 Wire: RS12 and RS16 – up to No. 12AWG (lugs are recommended on wire larger than No. 16AWG).
 RS12SC and RS16SC – up to two No. 12AWG.
 Sockets: RS12 and RS12SC – 11-pin receptacle to accept 3PDT relays.
 RS16 and RS16SC – 8-pin receptacle to accept 2PDT relays.
 Note: RS12 and RS12SC – CSA rating is 10 amps, 125 volts.

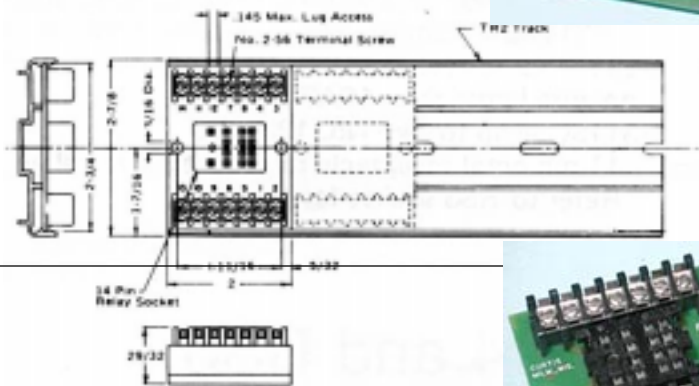
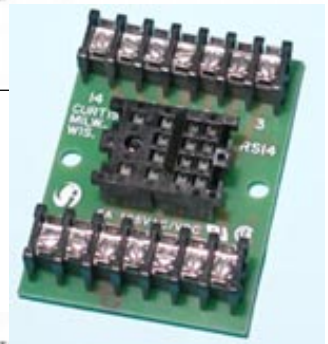


RS14

5, 8 and 11-PIN UNITIZED SQUARE-BASE RELAY-TYPE SOCKET ASSEMBLIES

SPECIFICATIONS

- Rating: 5 amps, 125 volts.
 Track: TR2
 48" length holds up to 24 sockets.
 Terminals: No. 2-56 screws with clamps. (1/4" C. to C. spacing.)
 Wire: Up to No. 16AWG wire.
 Sockets: 14-pin receptacle to accept miniature 4PDT relays.

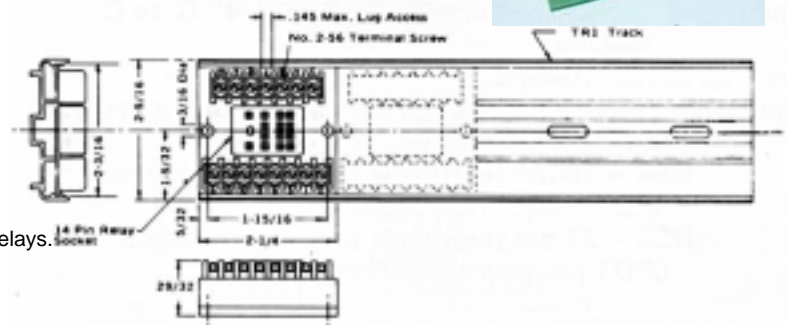
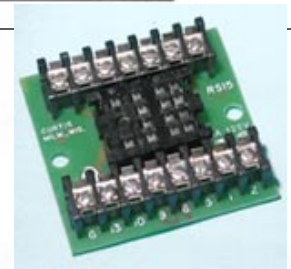


RS15

14 and 15-PIN UNITIZED SQUARE-BASE RELAY-TYPE SOCKET ASSEMBLIES

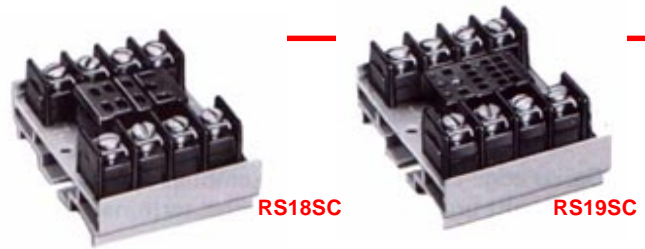
SPECIFICATIONS

- Rating 5 amps, 125 volts.
 Track: TR1
 48" length holds up to 21 sockets.
 Terminals: No. 2-56 screws with clamps. (1/4" C. to C. spacing.)
 Wire: Up to No. 16AWG wire.
 Sockets: 15-pin receptacle to accept grounded miniature 4PDT relays.



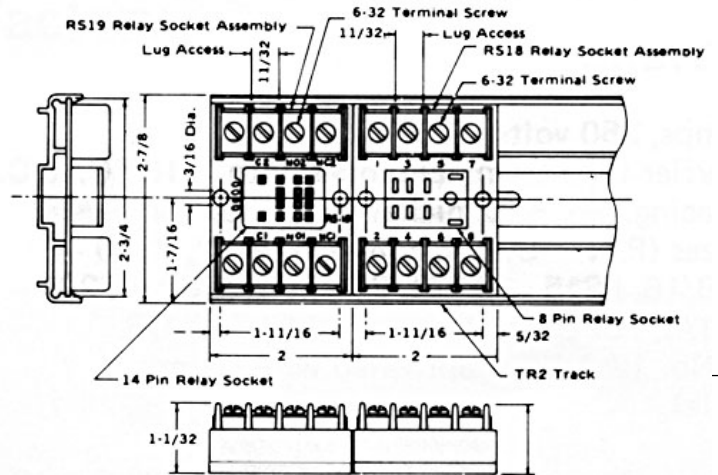
RS and CS SERIES

RS18, RS18SC, 19 and 19SC 8 and 14-PIN SQUARE-BASE SOCKET ASSEMBLIES FOR MINIATURE SPDT and DPDT RELAYS



SPECIFICATIONS

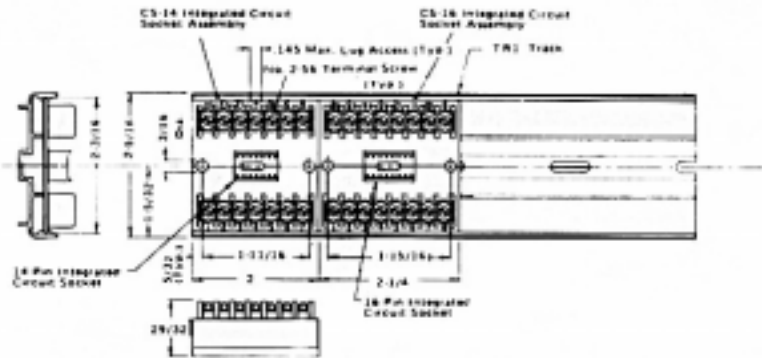
- Rating: 10 amps, 250 volts.
 Track: TR 2
 48" length holds up to 24 sockets.
 Terminals: RS18/RS19 – No. 6-32 screws on 7/16" centers.
 RS18SC/RS19SC – No. 6-32 screws with captivated wire clamp.
 Wire: Up to No. 12AWG wire.
 Sockets: RS18 – 8-pin receptacle to accept SPDT or DPDT relays.
 RS19 – 14-pin receptacle to accept SPDT or DPDT relays.
 Will also accept 4PDT relays with contacts paralleled.



CS14 and CS16 14 and 16-PIN DUAL IN-LINE SOCKET ASSEMBLIES

SPECIFICATIONS

- Track: TR3
 48" length holds up to 24 CS14 sockets.
 48" length holds up to 21 CS16 sockets.
 Terminals: No. 2-56 screws with clamps. (1/4" C. to C. spacing)
 Wire: Up to No. 16AWG wire.
 Sockets: CS14 – 14-pin dual in-line socket.
 CS16 – 16-pin dual in-line socket.



ACCESSORIES

- 18836 – (RS2 socket only)
- 18837 – (RS4 socket only)
- 18838 – (RS6 socket only)
- 18830 – (RS14 & 15 socket only)
- 18831 – (RS12 socket only)
- 18835 – (RS12 socket only)
- 18835 – Round 11-pin socket (RS11)
- 18821 – Round octal socket (RS8)
- 11832 – Square 8-pin socket (RS16)
- 44600 – Relay tie down spring
- 44613 - Tie down bail (CUS5, 12, 16)
- 44617 - Relay hold down clip (CUS5, 12, 16)
- 44610 – Tie down bail (CUS14 & 15)
- 62610 – TR track end clips

