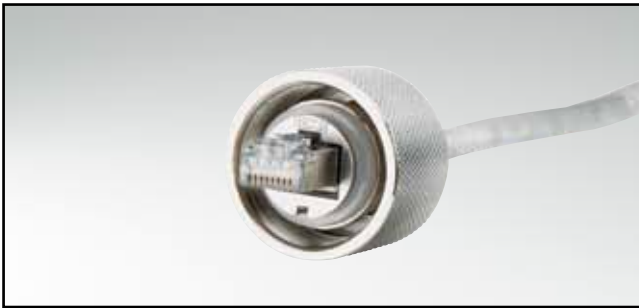


# RJ45 PLUG CONNECTOR SET

Metal version – M28 threaded termination

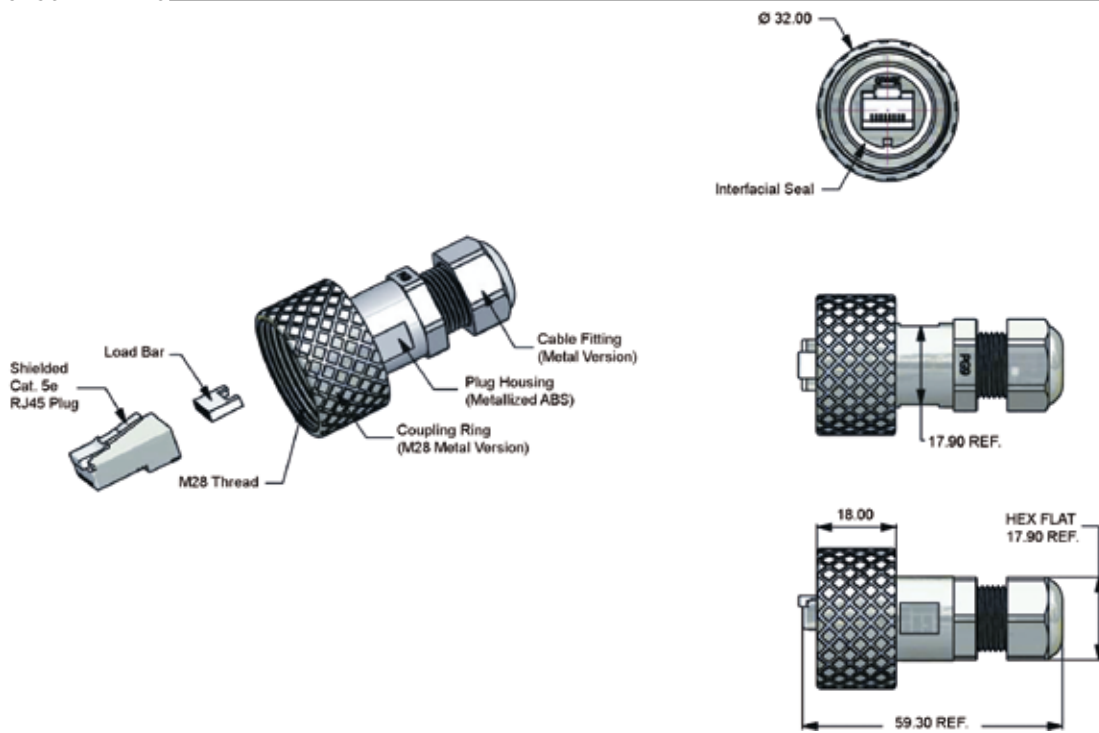


RoHS compliant

## DESCRIPTION

- Shielded RJ45 plug connector Cat.5e
- For use with solid or stranded, shielded or unshielded cable size AWG24
- Metal connector fastening ring, M28 thread
- Housing: Metallized plastic

## PRODUCT DRAWING



## ORDER DATA

Type	Material	RJ45 Cat.5e design	Part Number
Plug connector set	Metal housing / Coupling ring	Plug connector / Shielded	17-100944