

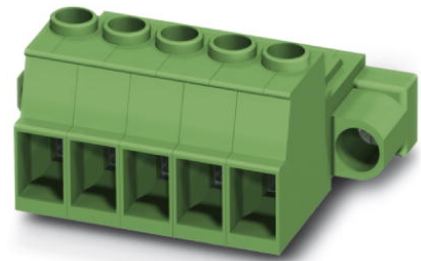


Extract from the online catalog

IPC 5/11-STF-7,62

Order No.: 1709241

The figure shows a 5-pos. version of the product



<http://eshop.phoenixcontact.de/phoenix/treeViewClick.do?UID=1709241>

Plug component, Nominal current: 41 A, Nom. voltage: 1000 V, Pitch: 7.62 mm, Number of positions: 11, Connection type: Screw connection, Color: green

Commercial data	
EAN	4046356075787
Pack	50 pcs.
Customs tariff	85366990
Weight/Piece	0.05134 KG
Catalog page information	Page 381 (CC-2009)

Product notes

WEEE/RoHS-compliant since: 05/17/2005

<http://www.download.phoenixcontact.com>
Please note that the data given here has been taken from the online catalog. For comprehensive information and data, please refer to the user documentation. The General Terms and Conditions of Use apply to Internet downloads.

Technical data

Dimensions / positions	
Pitch	7.62 mm
Dimension a	76.2 mm
Number of positions	11
Screw thread	M3

IPC 5/11-STF-7,62 Order No.: 1709241
<http://eshop.phoenixcontact.de/phoenix/treeViewClick.do?UID=1709241>

Tightening torque, min	0.7 Nm
Tightening torque max	0.8 Nm

Technical data

Insulating material group	I
Rated surge voltage (III/3)	8 kV
Rated surge voltage (III/2)	8 kV
Rated surge voltage (II/2)	6 kV
Rated voltage (III/2)	1000 V
Rated voltage (II/2)	1000 V
Connection in acc. with standard	EN-VDE
Nominal current I_N	41 A
Nominal voltage U_N	1000 V
Nominal cross section	10 mm ²
Maximum load current	41 A
Insulating material	PA
Inflammability class acc. to UL 94	V0
Stripping length	10 mm

Connection data

Conductor cross section solid min.	0.2 mm ²
Conductor cross section solid max.	10 mm ²
Conductor cross section stranded min.	0.2 mm ²
Conductor cross section stranded max.	6 mm ²
Conductor cross section stranded, with ferrule without plastic sleeve min.	0.25 mm ²
Conductor cross section stranded, with ferrule without plastic sleeve max.	6 mm ²
Conductor cross section stranded, with ferrule with plastic sleeve min.	0.25 mm ²
Conductor cross section stranded, with ferrule with plastic sleeve max.	4 mm ²
Conductor cross section AWG/kcmil min.	24
Conductor cross section AWG/kcmil max	10
2 conductors with same cross section, solid min.	0.2 mm ²
2 conductors with same cross section, solid max.	2.5 mm ²
2 conductors with same cross section, stranded min.	0.2 mm ²

IPC 5/11-STF-7,62 Order No.: 1709241
http://eshop.phoenixcontact.de/phoenix/treeViewClick.do?UID=1709241

2 conductors with same cross section, stranded max.	4 mm ²
2 conductors with same cross section, stranded, ferrules without plastic sleeve, min.	0.25 mm ²
2 conductors with same cross section, stranded, ferrules without plastic sleeve, max.	1.5 mm ²
2 conductors with same cross section, stranded, TWIN ferrules with plastic sleeve, min.	0.25 mm ²
2 conductors with same cross section, stranded, TWIN ferrules with plastic sleeve, max.	2.5 mm ²

Certificates / Approvals



Certification CUL, UL

CUL

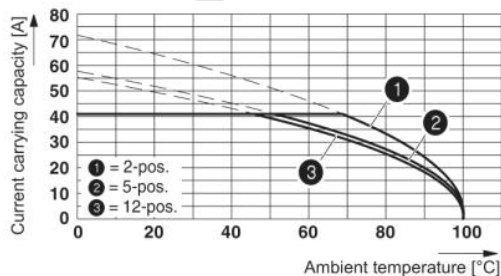
Nominal voltage U _N	600 V
Nominal current I _N	41 A
AWG/kcmil	24-8

UL

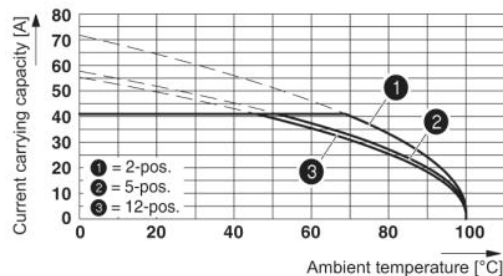
Nominal voltage U _N	600 V
Nominal current I _N	41 A
AWG/kcmil	24-8

Drawings

Diagram

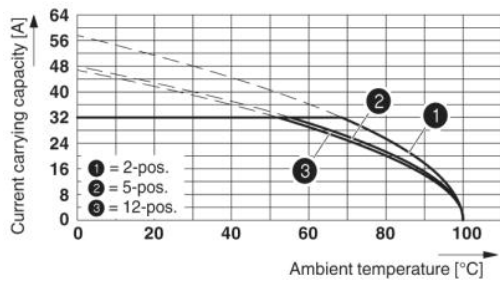


Derating curve for: IPC 5/...-ST-7.62 with PC 5/...-ST-7.62
Conductor cross section = 10 mm²



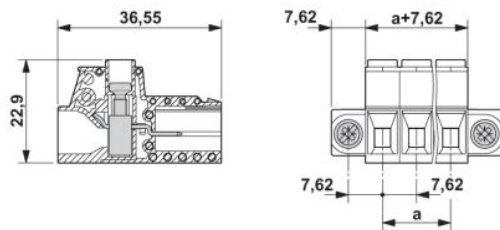
Derating curve for: IPC 5/...-ST-7.62 with IPC 5/...-G-7.62
Conductor cross section = 10 mm²

IPC 5/11-STF-7,62 Order No.: 1709241
<http://eshop.phoenixcontact.de/phoenix/treeViewClick.do?UID=1709241>



Derating curve for: IPC 5/...-ST-7,62 with IPC 5/....-G-7,62
 Conductor cross section 6 mm²

Dimensioned drawing



onlinecomponents.com

IPC 5/11-STF-7,62 Order No.: 1709241
<http://eshop.phoenixcontact.de/phoenix/treeViewClick.do?UID=1709241>

Address

PHOENIX CONTACT GmbH & Co. KG
Flachsmarktstr. 8
32825 Blomberg, Germany
Phone +49 5235 3 00
Fax +49 5235 3 41200
<http://www.phoenixcontact.de>



© 2009 Phoenix Contact
Technical modifications reserved;

onlinecomponents.com