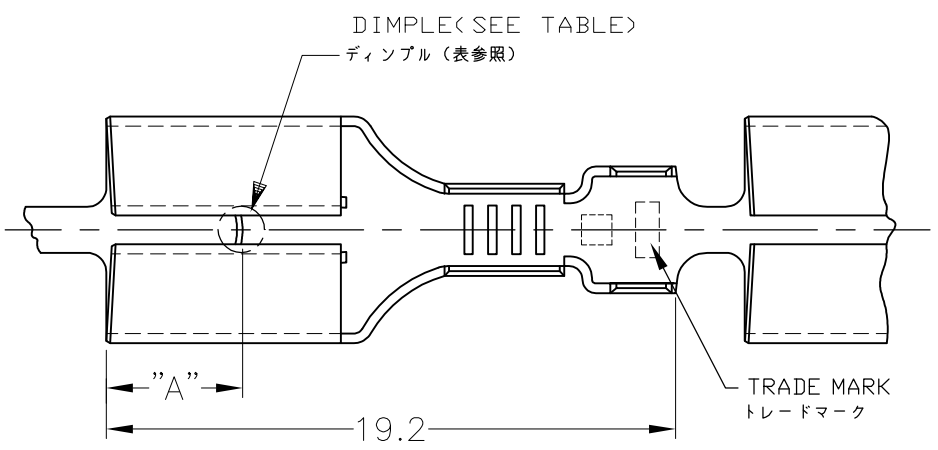
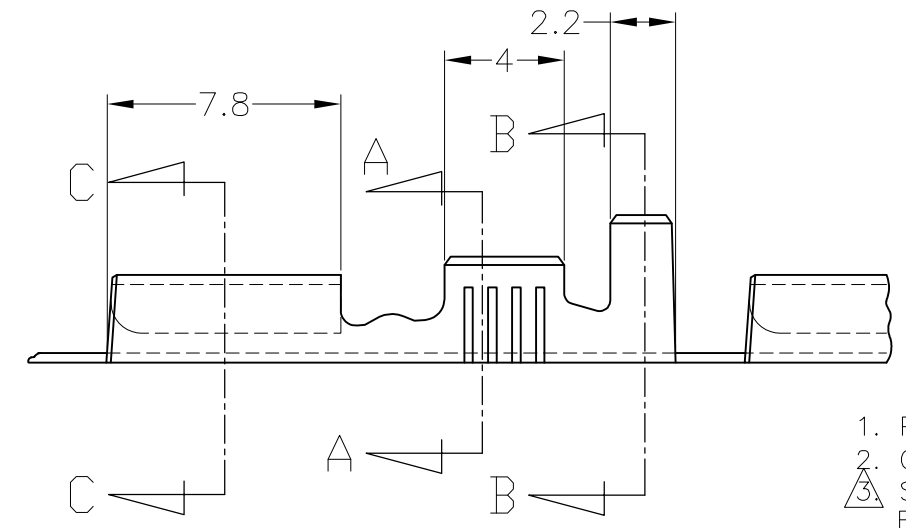
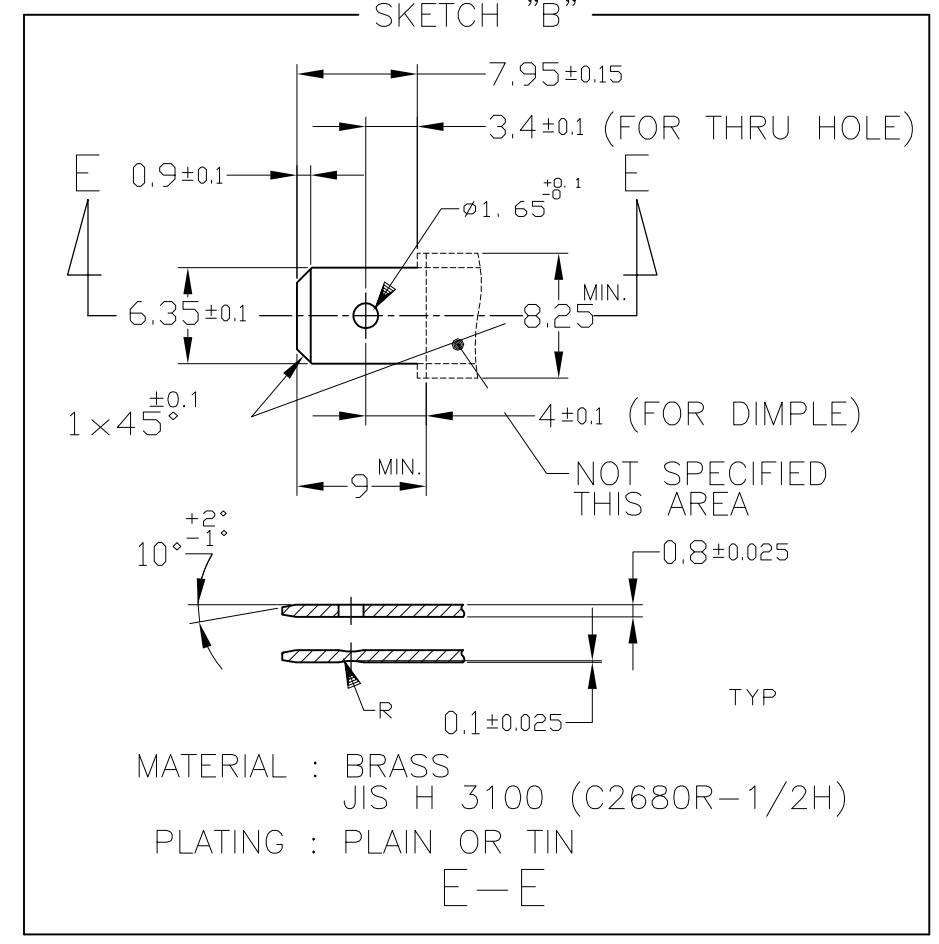
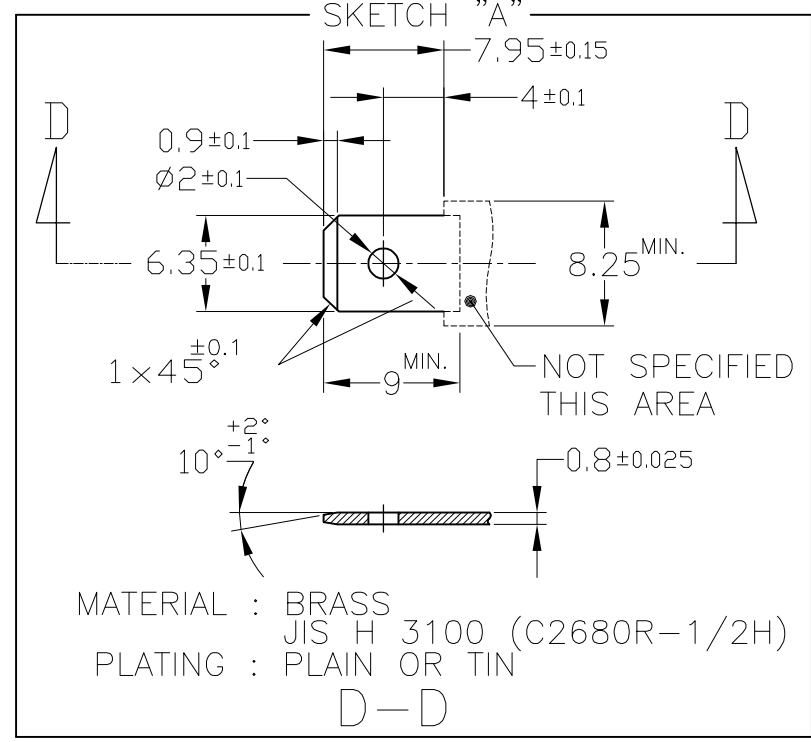


THIS DRAWING IS UNPUBLISHED. RELEASED FOR PUBLICATION
 © COPYRIGHT 2004 By - ALL RIGHTS RESERVED.

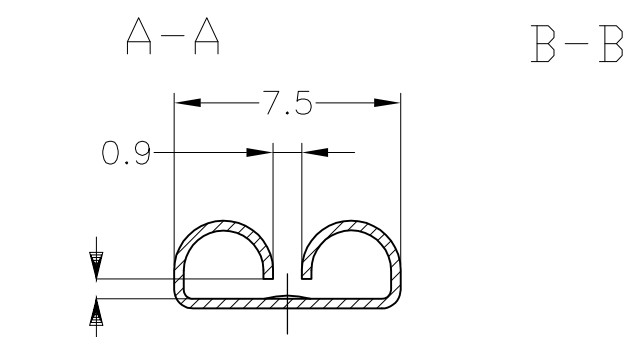
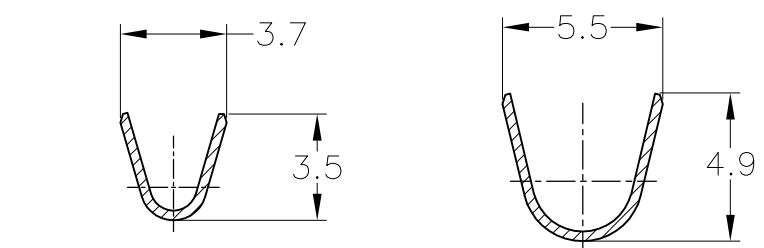
LOC	DIST	REVISIONS		
J	-	P	LTR	DESCRIPTION
		U1		REVISED PER ECO-11-005030
				DATE: 11MAR11
				DWN: RK
				APVD: HMR



推奨タブ図 RECOMMENDED TAB DIMENSIONS



1. PRODUCT SPEC : 108-5153, 108-5169
2. CRIMP SPEC : 114-5052
3. STRESS RELIEVING FINISH IS SUBJECT TO CHANGE BY THE TYPE OF STRESS RELIVING PROCESS
INERT GAS FURNACE - - - -MATTE
ATOMOSPHERIC FURNACE FOLLOWED BY ACID PICKLE - - - -BRIGHT
4. ELIMINATION STRESS RELIVING PROCESS
5. PRODUCT SPECIFICATION: 108-5147
6. QUALIFICATION TEST REPORT: 501-5050



この寸法は嵌合力によって管理する。
THIS DIMENSION IS CONTROLLED WITH MATING FORCE.

OBSELETE	AMP AUSTRALIAN PRODUCT	170030-1	W/O DIMPLE	△4	BRASS	#	#	6-170032-2
	OR EQUIVALENT TO 170030	170030-3	W/O DIMPLE	TIN PLATING	ZKLF-5 #4	#	#	170032-6
	OR EQUIVALENT TO 170030	170256-3	W/O DIMPLE	TIN PLATING	BRASS	#	179461-5	170032-5
	OR EQUIVALENT TO 170256	SKETCH, "A"	WITH DIMPLE	TIN PLATING	BRASS	4.5	#	170032-4
	OR EQUIVALENT TO 170256	SKETCH, "A" OR "B"	WITH DIMPLE	#	BRASS	3.8	#	170032-3
	OR EQUIVALENT TO 170030	170030-1	W/O DIMPLE	#	BRASS	#	#	170032-2
	OR EQUIVALENT TO 170030	SKETCH, "A"	WITH DIMPLE	#	BRASS	4.5	#	170032-1
		MATING TAB	DIMPLE	FINISH	MATERIAL	"A"	LOOSE PIECE NUMBER	PART NUMBER

1. 製品規格 : 108-5153, 108-5169
2. 取付適用規格 : 114-5052
3. ストレス除去処理
処理方法により外観が変わります。
不活性ガス加熱方式 - - - 無光沢
大気加熱方式 - - - 光沢
4. ストレス除去処理をしない。
5. 製品規格 : 108-5147
6. 認定試験報告書 : 501-5050

THIS DRAWING IS A CONTROLLED DOCUMENT.

DWN	A.YAMAGUCHI	23JUN04
CHK	K.BETSUI	23JUN04
APVD	K.BETSUI	23JUN04
PRODUCT SPEC	製品規格	SEE NOTE
APPLICATION SPEC	取付適用規格	-
WEIGHT	-	-

STE TE Connectivity

250 SERIES RECEPTACLE WITHOUT LATCH

SIZE	A3	CAGE CODE	00779	DRAWING NO	G-170032	RESTRICTED TO	-
SCALE	4:1	SHEET	1 OF 1	REV	U1		

CUSTOMER DRAWING

WIRE RANGE	0.5-2.27mm ² (AWG20-14)
INSULATION DIA.	2.16~3.43mmφ

DIMENSIONS:	単位: 概 mm
TOLERANCES UNLESS OTHERWISE SPECIFIED:	一般公差 ±0.4
Ø PLC	±
1 PLC	±
2 PLC	±
3 PLC	±
4 PLC	±
ANGLES	±3'
FINISH	仕上
MATERIAL	材料 0.32 THK
	SEE TABLE △3