

Signal lamp with integrated LED, 5 mm, protruding round bezel, 28 Volt, bezel red, Solder terminal



fields of application

- > Measurement-control-regulation
- > Electrical engineering
- > Mechanical and system engineering
- > Signalling systems
- > Model construction



description

Signal lamps with integrated LED, mounting hole diameter 5 mm

technical data

> general

illuminated	Yes
Bezel color	red
Bezel shape	round
Packaging unit	10 pcs.
Degree of protection, front side, according to DIN EN 60529	IP40
RoHS compliant	Yes
REACH compliant	Yes

> mounting diameters

Mounting hole	5 mm
Mounting depth	18 mm
Installation height	3.5 mm
Collar dimension	5.8 mm

> mechanical data

Fixing	Pushing into mounting hole
Terminal on the rear	Solder terminal
Lötbarkeit	Yes

> electrical data

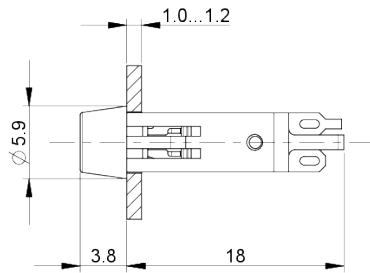
direct links

- > [RAFI eCatalog](#)

Operating voltage of the luminous element, min.	24 V
Operating voltage of the luminous element, max.	28 V

drawings

Dimensioned drawing



Mounting hole drawing

